

Revit User Guide for

camira

Synergy Quilt Channel

Version 1.0 | Revit 2015
January 2018

Created by

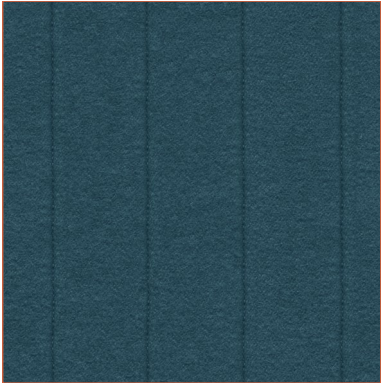


CamiraFabrics_TxtlRllCvrngs_

SynergyQuiltChannel

File Features

- Multiple Finishes (please see manufacture brochure)



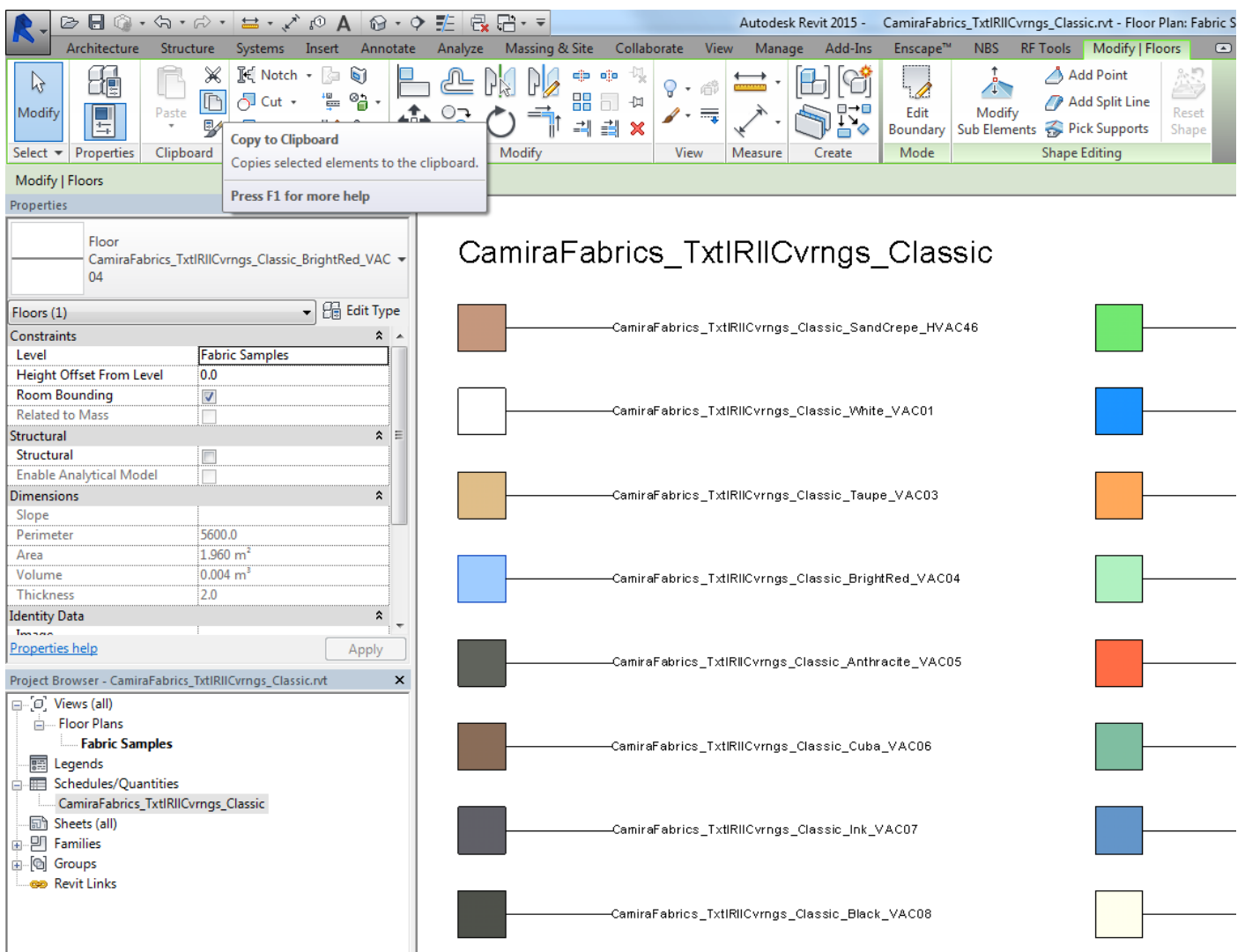
Predefined Types

Type Name	Type Name	Type Name
HQSC08-Serendipity		
HQSC17-Mix		
HQSC35-Chemistry		
HQSC55-Support		
HQSC59-Group		
HQSC62-Alike		
HQSC69-Sync		
HQSC84-Mutual		

A simple guide to using your Revit Ready file.

1. LOAD IT

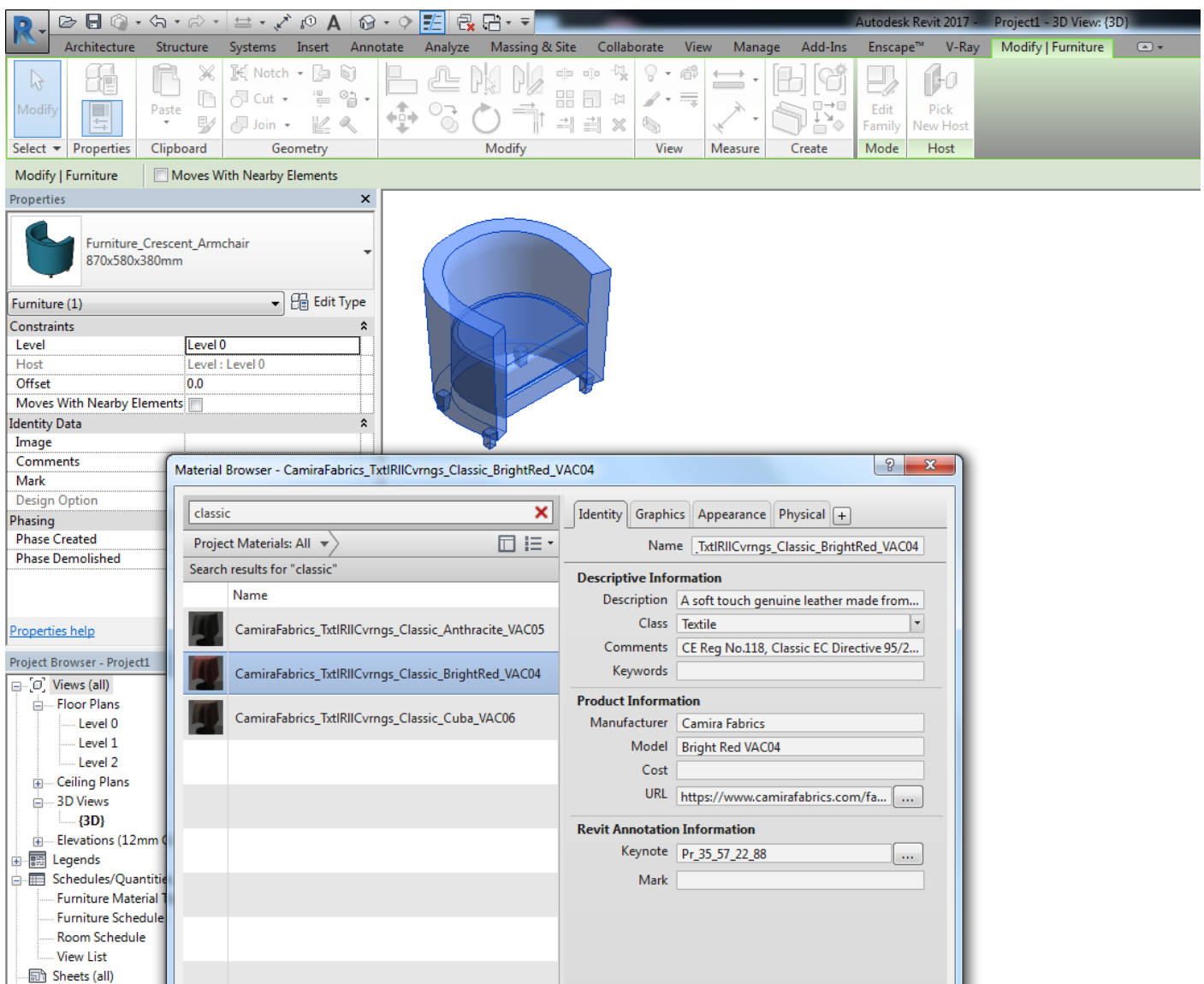
This fabric range is created in a Revit Project containing multiple finishes. Open the RVT file, click the sample or samples you wish to transfer to your project then click 'copy to clipboard'. Open your active project and click 'paste', the selected materials and its data will now be available.



A simple guide to using your Revit Ready file.

2. USE IT

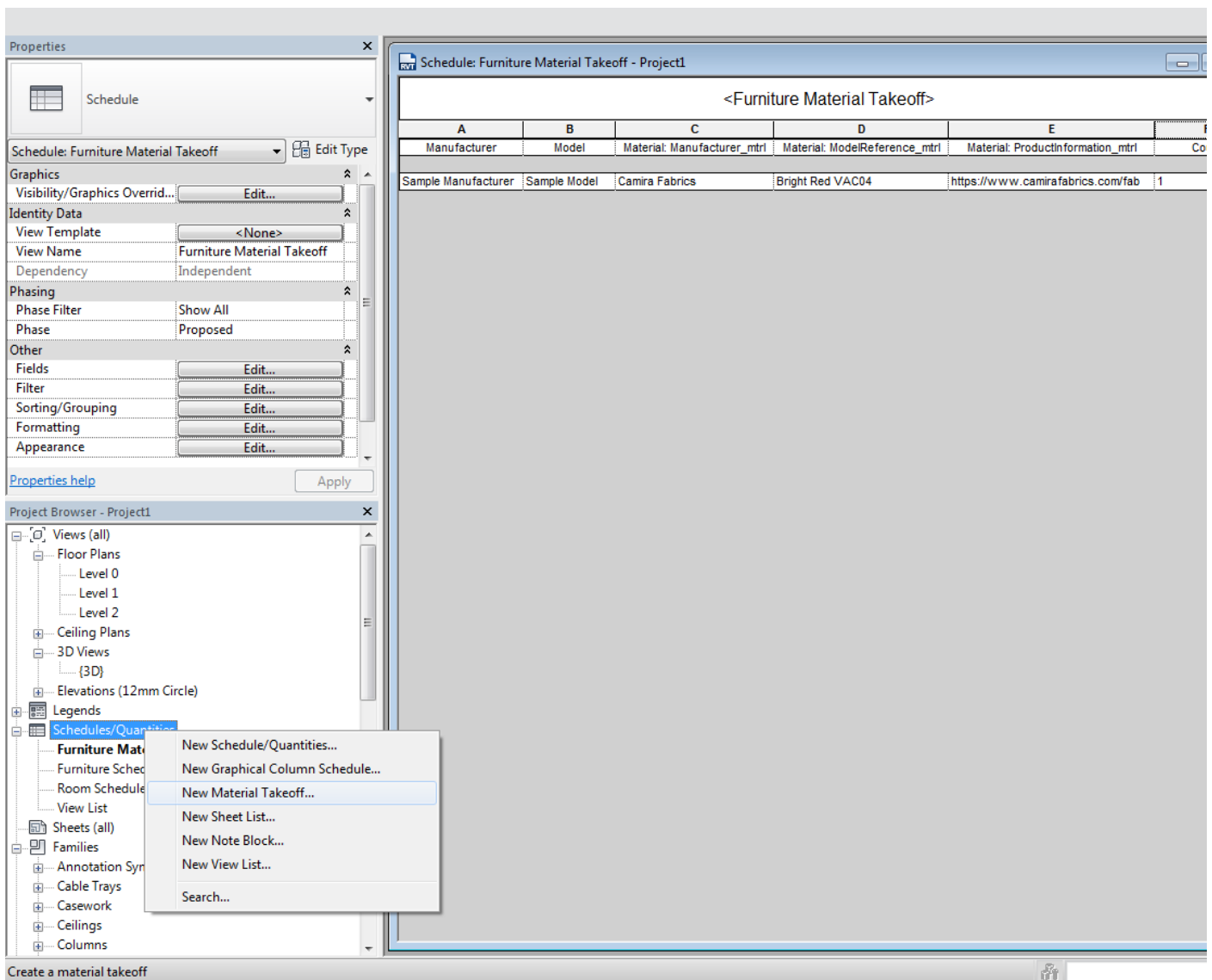
Click an item with a material parameter and open the material browser via this parameter. Search the desired fabric range, single click the sample for the data to appear and double check to activate.



A simple guide to using your Revit Ready file.

3. SCHEDULE IT

Creating a 'Material Takeoff' by right clicking 'Schedules/Quantities' will provide an itemised list of fabrics including information such as where they is applied and an URL directing to the sample.



Additional information

This component has been created by Diane Butterworth Ltd following the manufacturer's specification.

We hope our Revit files are a helpful tool in space planning and visualisation. We take care in ensuring all dimensions and features match manufacturer's literature, however actual product may vary slightly.

We would love to hear from you if you have any questions or feedback, please email hello@dianebutterworh.com

Thank you for using this BIM file,

