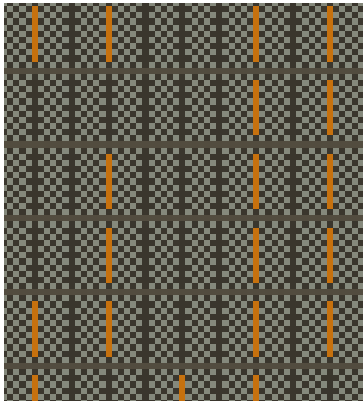
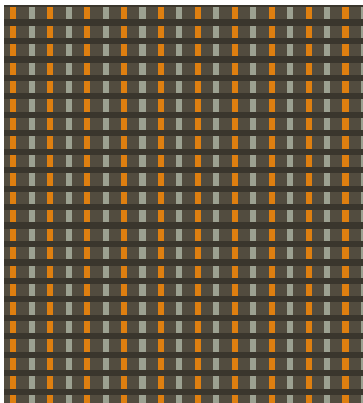
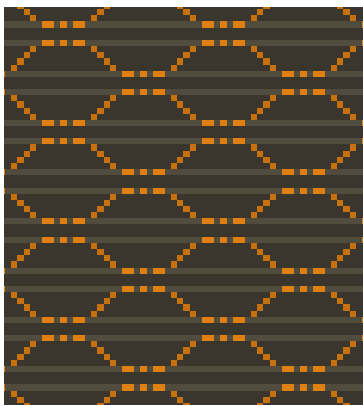
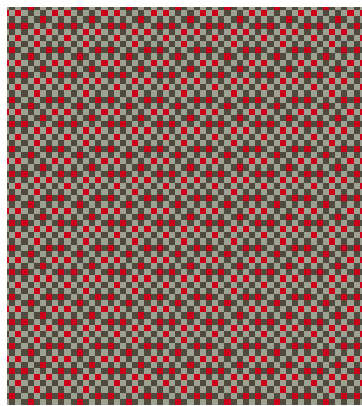
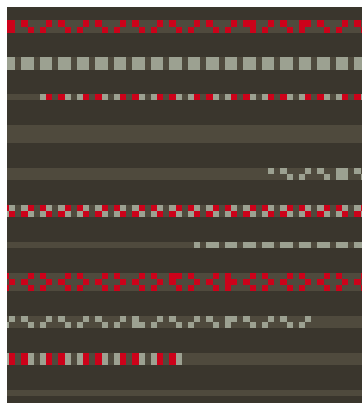
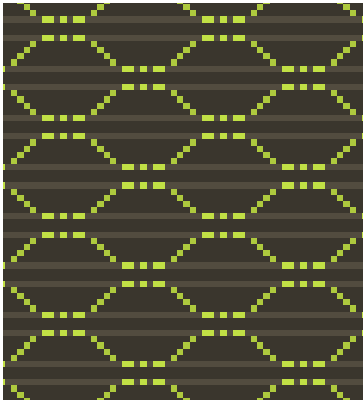


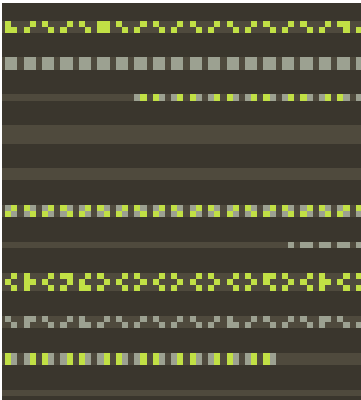
Wired

camira

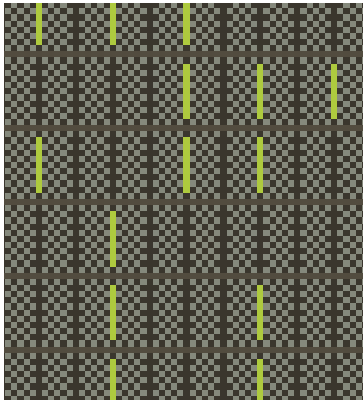
**Q754: EFZC44****Q754: EGBC44****Q754: EGAC44****Q754: EGFC42****Q754: EGCC44****Q1001: EGGC42****Q754: EGAC42****Q754: EGDC42****Q754: EGHC42**



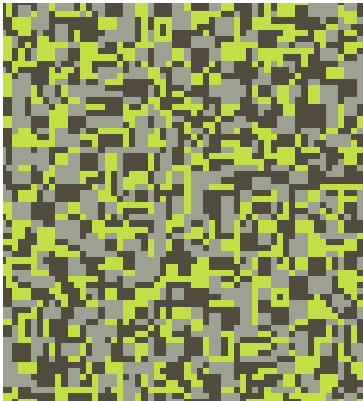
Q754: EGCC45



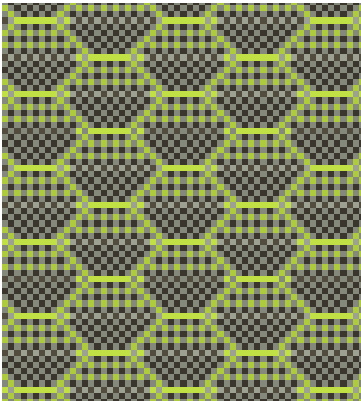
Q754: EGDC45



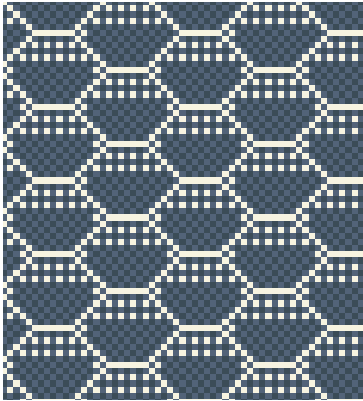
Q754: EFZC45



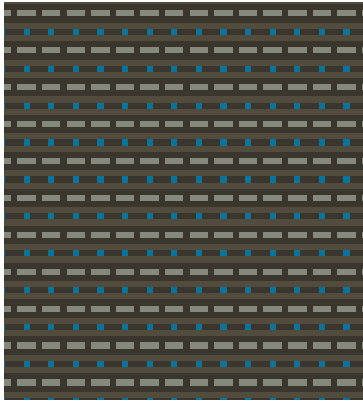
Q1001: EGSC45



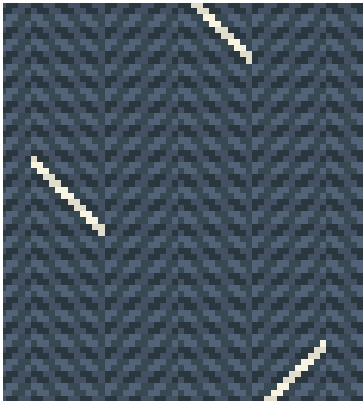
Q754: EGFC45



Q1001: EGNC47



Q754: EGEC46



Q754: EGOC47

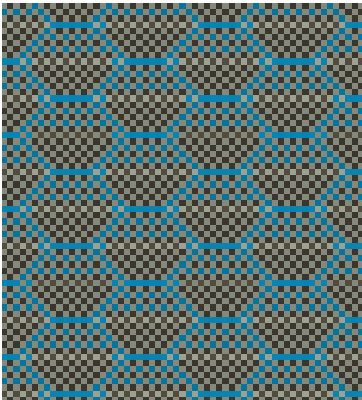


Q754: EGMC47

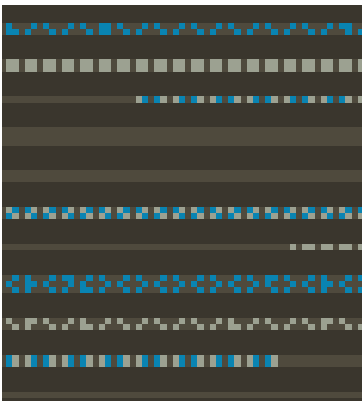


Q754: EGCC47

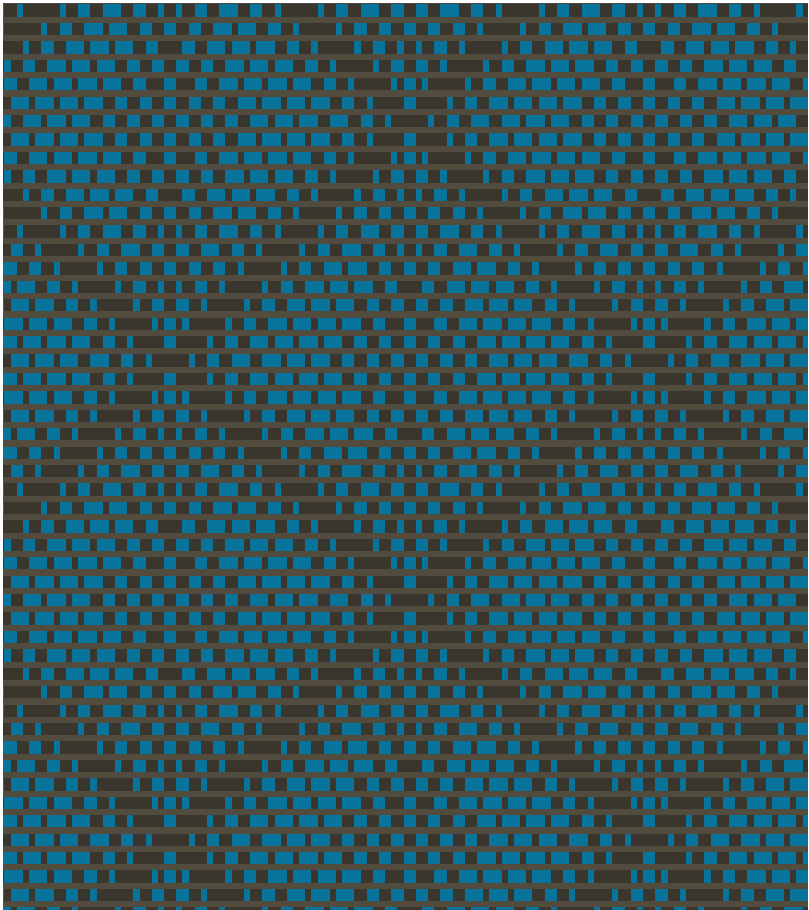
All colourways in this range are available on a 6 - 8 week lead time with a MOQ of 300m.
Please note bespoke patterns and constructions are available.



Q754: EGFC46



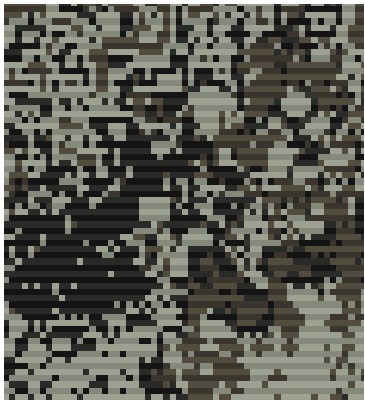
Q754: EGDC46



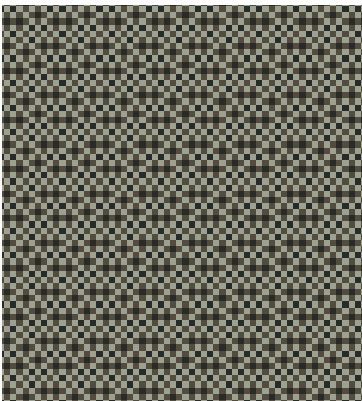
Q754: EGIC46



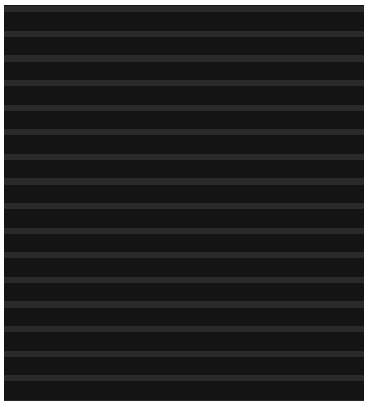
Q754: EGKC43



Q754: EGJC43



Q1001: EGGC43



Q754: EGLC43



Wired is an intricately detailed fabric collection which subtly moves from one surface texture to another through a carefully constructed mix of pile heights and handles. Some areas of the fabric surface are presented as all cut moquette and others in all loop to create a complex textural transport upholstery which combines both unique aesthetics and high performance.

The collection is designed around small scale textures and patterns with highlight accent colours of muted blues, greens, subdued orange and vivid red set against darker grey grounds. The design effects span illusory, graduated and delicate dappling to set a tone of poise and refinement.

Technical information

UK	D	F
Composition Pile: 85% Wool, 15% Nylon Ground: 100% Cotton	Zusammensetzung Oberfläche: 85% Wolle, 15% Nylon Trägergewebe: 100% Baumwolle	Composition Surface: 85% Laine, 15% Nylon Couche Inférieure: 100% Coton
Width 127 cm minimum	Breite 127 cm nutzbare Breite	Largeur 127 cm minimum
Weight 860 g/m² ±5% (1290 g/lin.m ±5%)	Gewicht 860 g/m² ±5% (1290 g/lfd.m ±5%)	Poids 860 g/m² ±5% (1290 g/m.l ±5%)
Thickness 4.2 ±0.3 mm (BS 4051)	Dicke 4.2 ±0.3 mm (BS 4051)	Epaisseur 4.2 ±0.3 mm (BS 4051)
Abrasion Resistance ≥80,000 Martindale cycles (ISO 12947-2)	Scheuerfestigkeit ≥80,000 Martindale Scheuertouren (ISO 12947-2)	Résistance à l'abrasion ≥80,000 Martindale tours (ISO 12947-2)
Flammability* BS 5852 Ignition Source 5 With UIC (130) Backcoat: ECE Reg No. 118 Annexes 7 & 8 BS 5852 Ignition Source 7 UIC 564-2 Appendix 5, Class A With NitroPhlam365: EN 45545-2 (R21) HL3 Tailored to meet international bus, coach and rail standards. For specific compliance and certification please contact your Camira representative.	Feuersicherung* BS 5852 Ignition Source 5 Mit UIC (130) Backcoat: ECE Reg No. 118 Annexes 7 & 8 BS 5852 Ignition Source 7 UIC 564-2 Appendix 5, Class A Mit NitroPhlam365: EN 45545-2 (R21) HL3 Zugeschnitten auf internationale Standards für Busse, Reisebusse und Bahnen. Für spezifische Anforderungen und Zertifizierung wenden Sie sich bitte an Ihren Ansprechpartner bei Camira.	Flammabilité* BS 5852 Ignition Source 5 Avec UIC (130) Backcoat: ECE Reg No. 118 Annexes 7 & 8 BS 5852 Ignition Source 7 UIC 564-2 Appendix 5, Class A Avec NitroPhlam365: EN 45545-2 (R21) HL3 Conçus pour répondre aux normes internationales d'autobus, d'autocars et chemin de fer. Pour des certifications ou conformités spécifiques, veuillez contacter votre représentant Camira.
Light Fastness 6 (EN ISO 105 B02)	Lichtechtheit 6 (EN ISO 105 B02)	Solidité à la lumière 6 (EN ISO 105 B02)
Fastness to Rubbing Wet: 4, Dry: 4 (ISO 105 X12)	Reibechtheit Wet: 4, Dry: 4 (ISO 105 X12)	Solidité au Frottement Wet: 4, Dry: 4 (ISO 105 X12)
Maintenance Vacuum regularly. Wipe clean with a damp cloth or shampoo using proprietary upholstery shampoo.	Reinigung Regelmässig staubsaugen. Dazu mit einem feuchten Tuch abwischen, oder mit einem speziellen Polsterschaum behandeln.	Nettoyage Aspirer régulièrement. Essuyer avec une étoffe humide ou nettoyer à l'aide d'un produit approprié pour tissus d'ameublement.
<small>* Flammability performance is dependent on components used. FR post-treatments may be required to meet specific standards. Further information can be provided on request. Post treatments may change the technical performance and appearance of a product.</small>	<small>* Die Entflammbarkeit ist von den verwendeten Komponenten abhängig. Flammmhemmende Nachbehandlungen können erforderlich sein, um bestimmte Standards zu erfüllen. Weitere Informationen werden auf Anfrage zur Verfügung gestellt. Stoffbehandlungen können die technischen Eigenschaften und das Aussehen des Stoffes beeinflussen.</small>	<small>*La performance d'inflammabilité dépend des composantes utilisées. Les traitements postérieurs FR peuvent être nécessaires pour respecter des normes spécifiques. Plus amples renseignements peuvent être fournis sur demande. Les traitements supplémentaires post-production peuvent altérer les performances techniques et l'apparence d'un produit.</small>
<small>Batch to batch variations in shade may occur within commercial tolerances. The Unregistered Design Rights and the Copyright in all designs are the exclusive property of Camira Fabrics Limited.</small>	<small>Handelsübliche Farbabweichungen vorbehalten. Die registrierten und nicht registrierten Urheberrechte der Dessinierungen sind ausschliessliches Eigentum der Camira Fabrics Limited.</small>	<small>Variations de coloris d'un bain à un autre peuvent se manifester. Les Droits de Conception non-enregistrés et les droits d'auteur de tous les motifs sont la propriétés exclusives de Camira Fabrics Limited.</small>