

Rapido

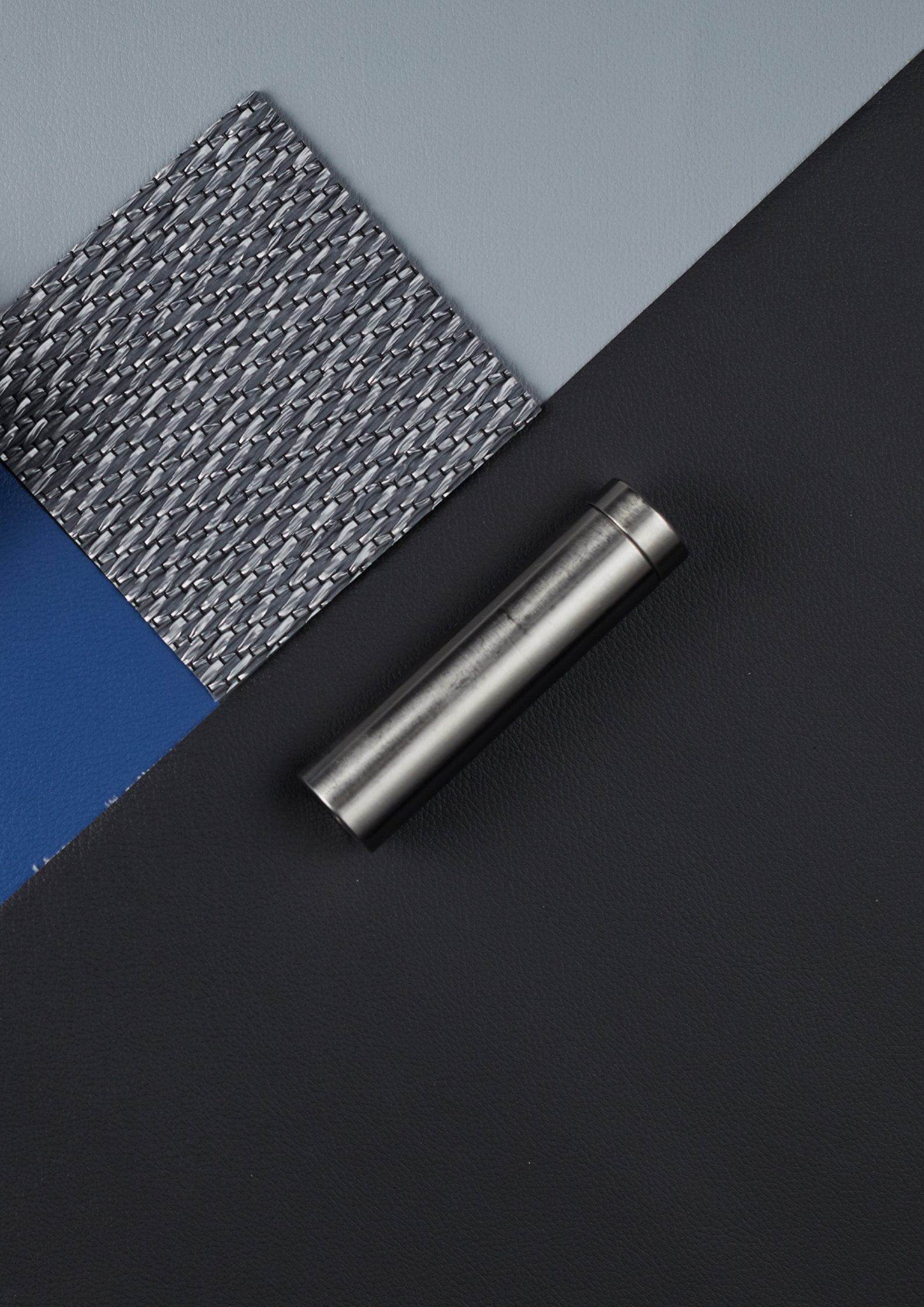
A high-performance vinyl for contemporary rail interiors.

camira



Blending style and performance with a distinctly modern edge, Rapido is a leather-look vinyl with a subtle surface grain and on-trend, semi-matt finish. Bringing a contemporary touch to rail interiors, this flexible upholstery solution meets the highest European flammability standard, EN 45545 (R21) – HL3.

- ✓ **Performance engineered vinyl**
- ✓ **Flame retardant to EN 45545 (R21) – HL3**
- ✓ **Easy clean, wipe down upholstery solution**
- ✓ **Enhanced sanitisation through bleach cleanability**
- ✓ **Ultra-flexible for improved upholsterability**
- ✓ **Made to order in custom colourways**





A distinctly modern vinyl

Designed to reflect the natural grain and finish of genuine leather, Rapido delivers the appealing tactility and comfort that makes for an improved passenger experience.

Custom colours

A made-to-order product, Rapido can be produced in the perfect colourway for your rail interior. Whether you have a shade in mind, a Pantone reference, or a Camira fabric you would like to complement, we can match it and make it.

With a minimum order quantity of just 100 metres, this leather-look vinyl makes bespoke accessible.

Perfect pairings

Complementing the soft surface of moquette and flat woven fabrics, Rapido can be paired with other Camira capabilities to create an array of versatile upholstery solutions.

Flame retardant to EN 45545 (R21) – HL3

The European standard for fire protection on trains, EN 45545 assesses the ignitability, heat release, smoke opacity and toxicity of a material. Implemented to ensure that rail interiors achieve the highest level of safety possible, the regulation allows passengers more time to escape from a carriage in the event of a fire.

Designed and manufactured with safety at its core, Rapido meets EN 45545 to the highest hazard level, HL3.

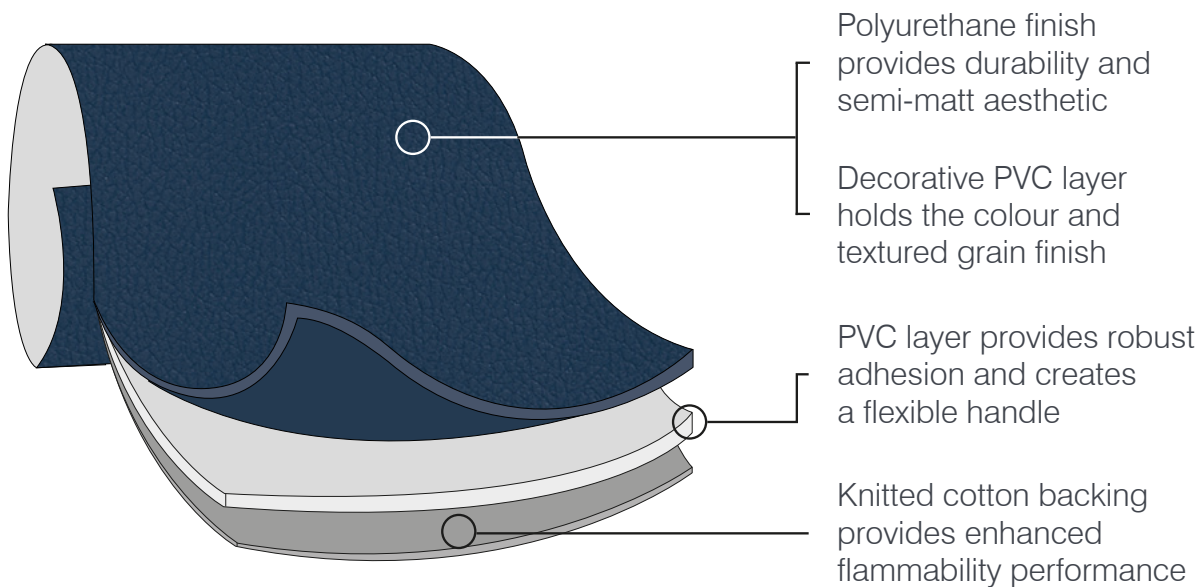




Performance, engineered

A multi-layered vinyl which delivers the highest of performance standards, Rapido has been technically engineered for flexibility, flammability, and durability.

With each layer working in harmony, Rapido delivers on every level – a knitted cotton backing provides enhanced flame retardancy; one layer of PVC creates robust adhesion and an ultra-flexible handle; a second layer of PVC provides colouration and a textured grain surface; a final, durable PU finish brings a layer of protection, and creates the soft, matt look and feel of Rapido.



Easy clean surface

With a bleach cleanable surface, Rapido can be quickly disinfected for enhanced sanitisation in today's hygiene-conscious world.

Guaranteed flexibility

With a knitted cotton backing and pliable composition, Rapido is highly flexible. Certified to ISO 7854 400,000 cycles, this test demonstrates the product's resistance to damage by flexing, and guarantees that it is ideal for upholstery on seating, piping, and headrests in rail interiors.

Enhanced durability

Achieving over 100,000 Martindale rubs, the soft, semi-matt surface and easy drape of Rapido belies its high durability.

Technical Information

Composition

Surface: 96% PVC, 4% PU

Substrate: 100% Cotton



Transport
seating



Year guarantee

A high-performance vinyl with a subtle surface grain and on-trend, semi-matt finish, Rapido brings a contemporary touch to rail interiors. Designed for safety, style, and sanitisation, this leather-look upholstery solution delivers on every level. Meeting the highest European flammability standard, EN 45545 (R21) – HL3, and delivering enhanced hygiene through its bleach cleanable surface, Rapido is made to meet the demands of today's transport world.

A made-to-order product, Rapido has a minimum order quantity of 100 metres.

Technical Specification

Rapido

Composition

Surface: 96% PVC, 4% PU
Substrate: 100% Cotton

Width

139 cm minimum

Weight

640 g/m² ±10% (890 g/lin.m ±10%)

Thickness

EN ISO 5084 1.05mm ±0.15mm

Abrasion Resistance

ISO 5470-2 100,000 rubs
(Grade 2 minimum)

Flexes

ISO 7854 Method B 400,000 Flexing cycles/
5 year guarantee (full details available)

Flammability*

EN 45545 (R21) – HL3

Note: Flammability performance is dependent on components used. Our certificates show what substrates have been used in our tests. For composite tests customers must ensure their complete furniture meets the necessary standards.

Light Fastness

6 (ISO 105 - B02)

Hot Light Fastness

6 (ISO 105 - B06)

Fastness to Rubbing

Wet: 4, Dry: 4 (ISO 105 - X12)

Residual extension

ISO 14704-1 Method A
< 3% After 30 minutes

Maintenance

Vacuum regularly. Wipe with a damp cloth using a proprietary upholstery shampoo/soap. For deeper cleaning use bleach. Do not alcohol clean. Full details can be found in our cleaning and disinfection guide.

Batch to batch variations in shade may occur within commercial tolerances. We reserve the right to alter technical specifications without notice. The Unregistered Design Rights and the Copyright in all designs are the exclusive property of Camira Fabrics Limited.

