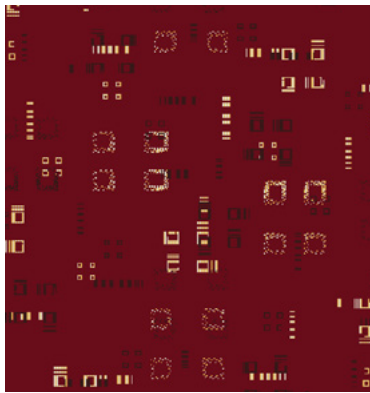
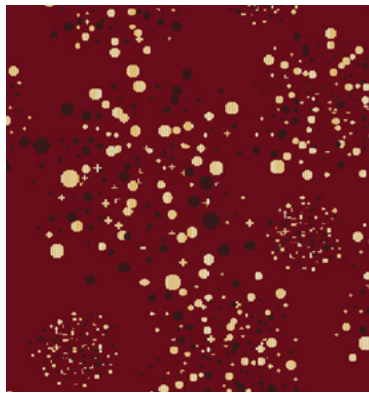


Orient

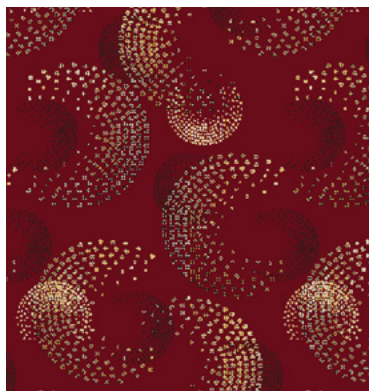
camira



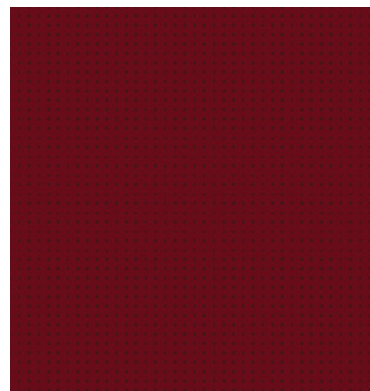
AADC71



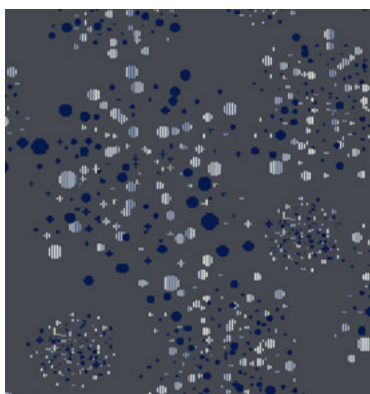
AJAC71



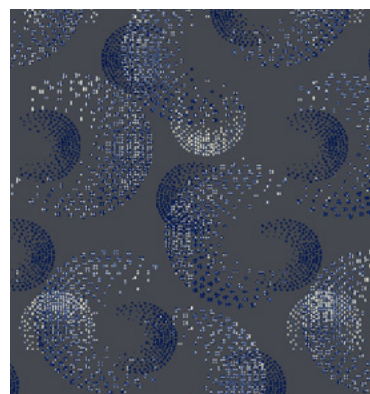
AAVC71



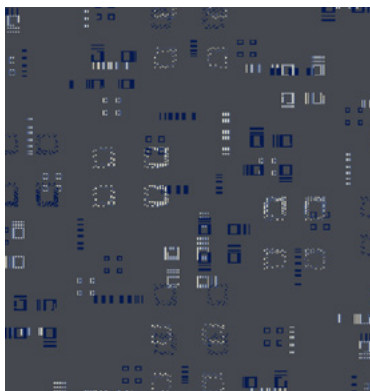
AALC71



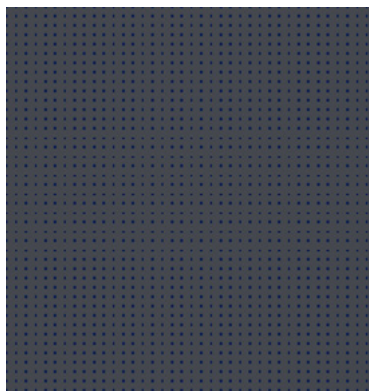
AJAC72



AAVC72

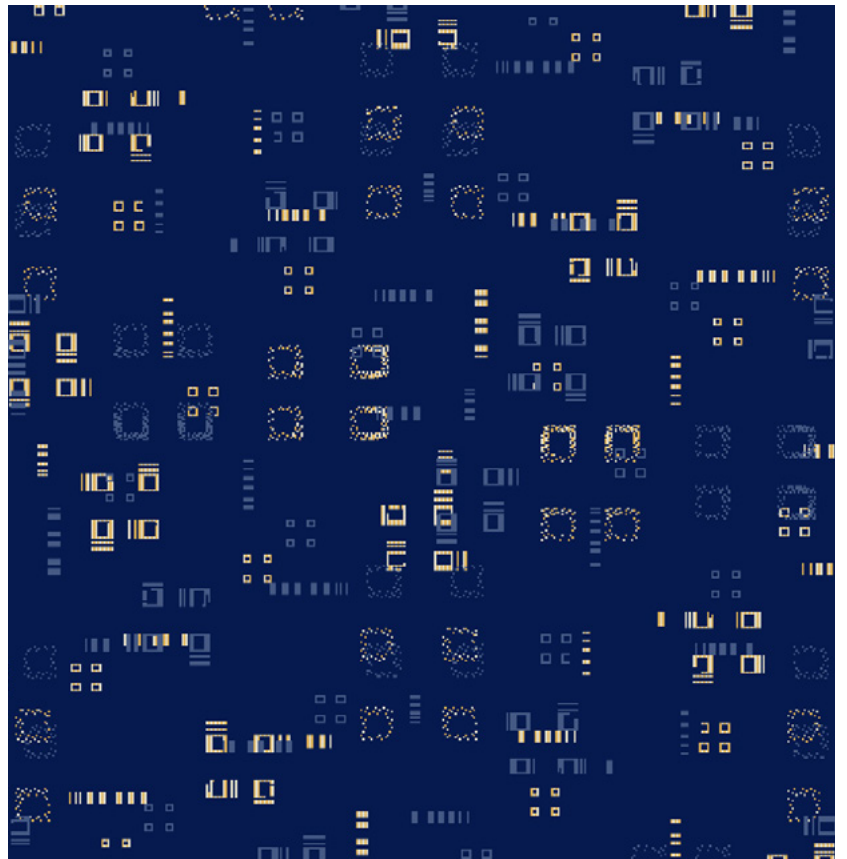


AADC72



AALC72

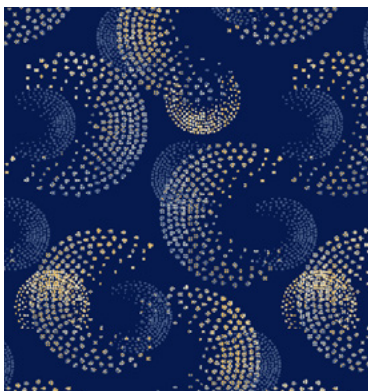
Photographic fabric scans are not color accurate. Always request actual fabric samples before ordering.



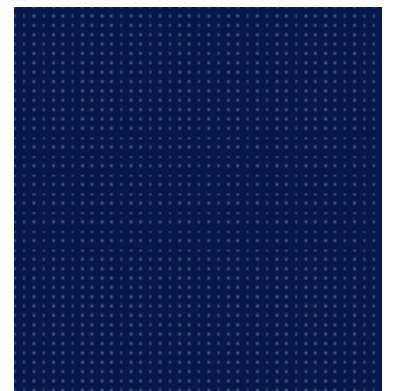
AAD303



AJA303



AAV303



AAL303

Transport
seating

Year guarantee

Orient is a collection of lightweight polyester fabrics including three abstract patterns and one plain, available in three classic colorways. The patterned fabrics incorporate a textured yarn to give a three dimensional appearance. With trend focused colors, they have a contemporary appearance and soft finish while retaining durability and performance.

Technical information

EN

Composition

Pile: 100% Polyester
Ground: 67% Polyester, 33% Rayon

Width

59 inches minimum

Weight

17^{1/2} oz/sq yd ±5% (28^{1/2} oz/running yd ±5%)

Thickness

0.113 inches ±0.012 inches (BS 4051) (ISO 1765)

Abrasion Resistance

≥80,000 Martindale cycles (EN ISO 12947-2)

Flammability

FMVSS 302

Note: Flammability performance is dependent on components used. Our certificates show what substrates have been used in our tests. For composite tests customers must ensure their complete furniture meets the necessary standards.

Light Fastness

6 (BS EN ISO 105 B02)

Fastness to Rubbing

Wet: 4, Dry: 4 (BS EN ISO 105 X12)

Maintenance

Vacuum regularly. Wipe clean with a damp cloth or shampoo using proprietary upholstery shampoo.

Batch to batch variations in shade may occur within commercial tolerances.

The Unregistered Design Rights and the Copyright in all designs are the exclusive property of Camira Fabrics Limited.

F

Composition

Surface: 100% Polyester
Couche Inférieure: 67% Polyester, 33% Rayon

Largeur

59 pouces minimum

Poids

17^{1/2} oz/sq yd ±5% (28^{1/2} oz/yard.lin ±5%)

Epaisseur

0.113 pouces ±0.012 pouces (BS 4051) (ISO 1765)

Résistance à l'abrasion

≥80,000 Martindale tours (EN ISO 12947-2)

Flammabilité

FMVSS 302

Notez: La performance de flammabilité dépend des composantes utilisées. Nos certificats indiquent les substrats utilisés dans nos tests. Pour les tests composites, les clients doivent s'assurer que leurs meubles complets satisfont aux normes nécessaires.

Solidité à la lumière

6 (BS EN ISO 105 B02)

Solidité au frottement

Mouillé: 4, Sec: 4 (BS EN ISO 105 X12)

Nettoyage

Aspirer régulièrement. Essuyer avec une étoffe humide ou nettoyer à l'aide d'un produit approprié pour tissus d'ameublement.

Variations de coloris d'un bain à un autre peuvent se manifester.

Les Droits de Conception non-enregistrés et les droits d'auteur de tous les motifs sont la propriété exclusive de Camira Fabrics Limited.

ES

Composición

100% Poliéster
Superficie: 67% Poliéster, 33% Rayon

Ancho

59 pulgadas mínimo

Peso

17^{1/2} oz/sq yd ±5% (28^{1/2} oz/lin.y ±5%)

Espesor

0.113 pulgadas ±0.012 pulgadas (BS 4051) (ISO 1765)

Resistencia a la abrasión

≥80,000 Martindale ciclos (EN ISO 12947-2)

Inflamabilidad

FMVSS 302

Nota: El rendimiento de la inflamabilidad depende de los componentes usados. Nuestros certificados muestran qué substratos se han usado en nuestros tests. Para tests compuestos nuestros clientes deben asegurar si sus muebles cumplen la normativa al uso.

Solidez a la luz

6 (BS EN ISO 105 B02)

Solidez al rozamiento

Húmedo: 4, Seco: 4 (BS EN ISO 105 X12)

Limpieza

Limpiar con aspiradora frecuentemente. Bien lavar con un paño húmedo o con un champú apropiado para tapicería.

Cada tintada puede tener pequeñas variaciones en el tono dentro de las tolerancias comerciales aceptadas.

Los derechos sobre los diseños no registrados y los derechos de autor en todos los diseños son propiedad exclusiva de Camira Fabrics Limited.