

# Hybrid

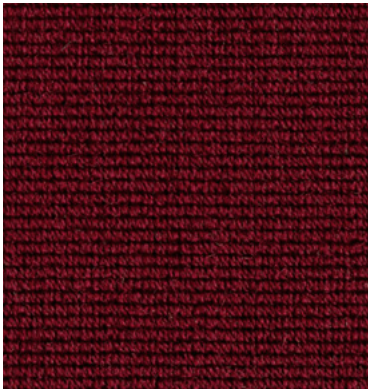
---

This perfectly refined textile expertly incorporates the aesthetics of a flat-woven fabric with the durability of a plush, destined to transform transport interiors with a contemporary look. The double density all loop face is designed to withstand the demands of today's transport world with its high performance capabilities. Wire-woven using British wool, Hybrid is robust, lightweight, and imbued with sustainable credentials.

**camira**



**Charge**  
AAD63



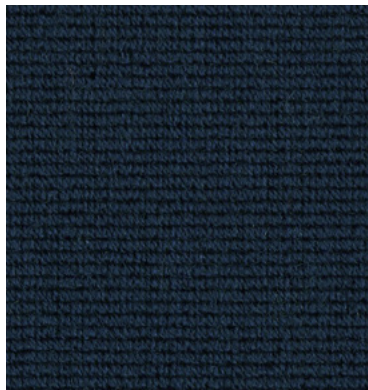
**Power**  
HAAD62



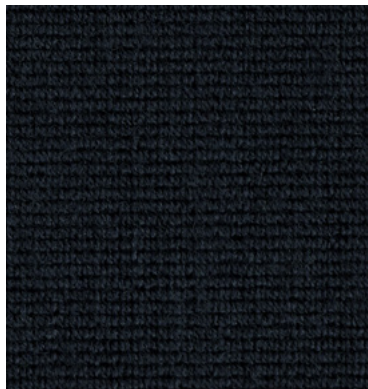
**Electric**  
HAAD61



**Ignition**  
HAAD58



**Turbo**  
HAAD60



**Fuel**  
HAAD59



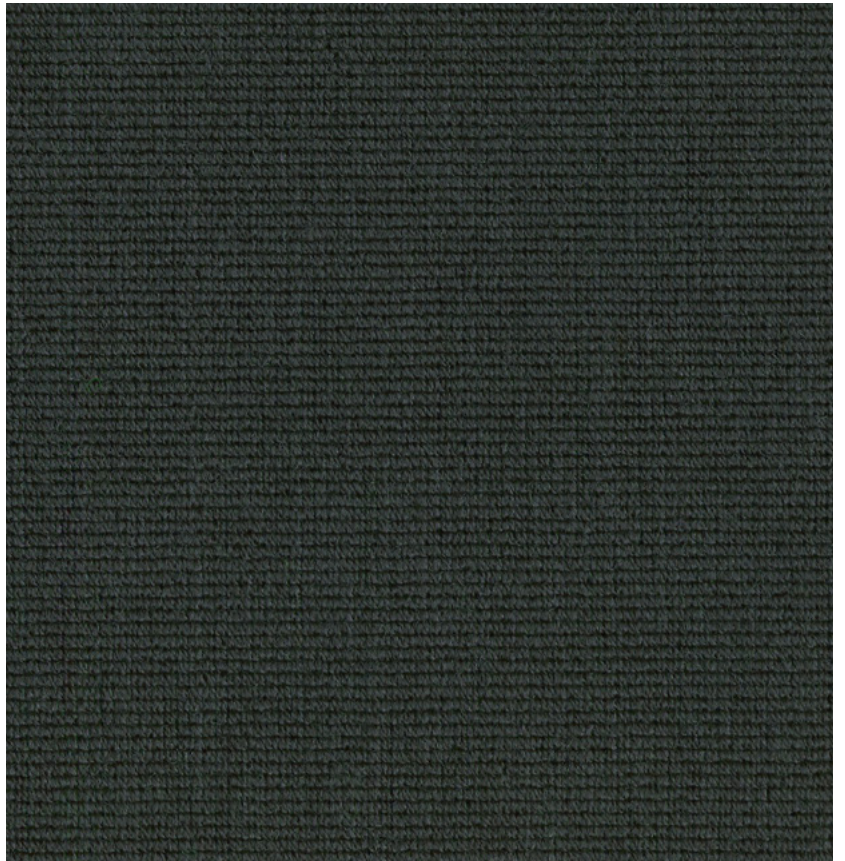
Photographic fabric scans are not color accurate. Always request actual fabric samples before ordering.



**Solar**  
HAAD57



**Bio**  
HAAD56



**Shield**  
HAAD55



**Axel**  
HAAD54



**Motor**  
HAAD53

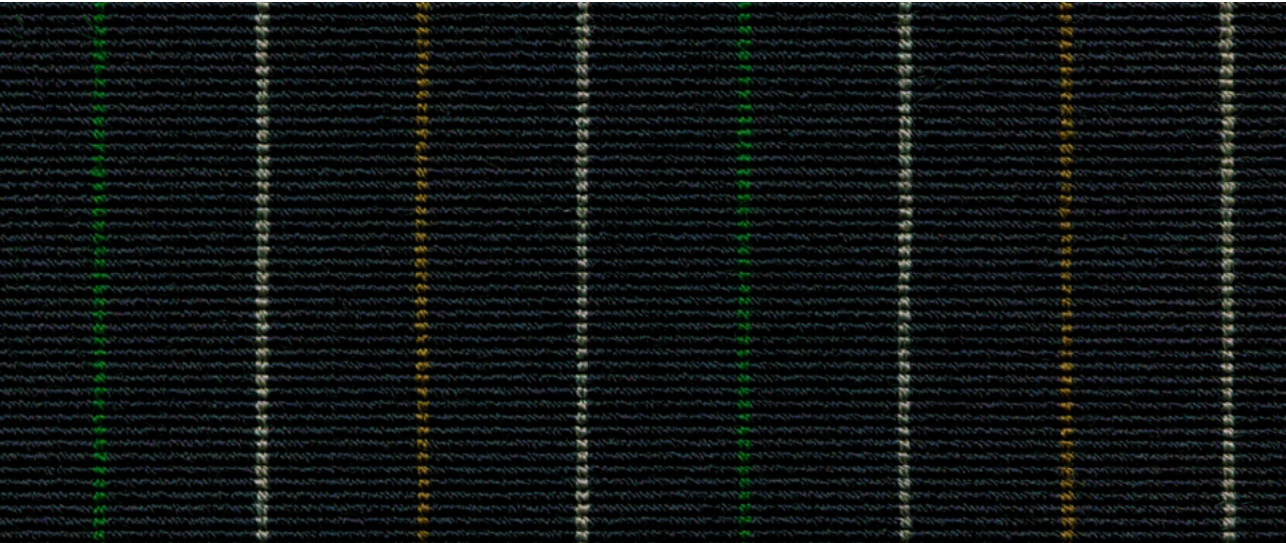


**Bypass**  
HAAD52

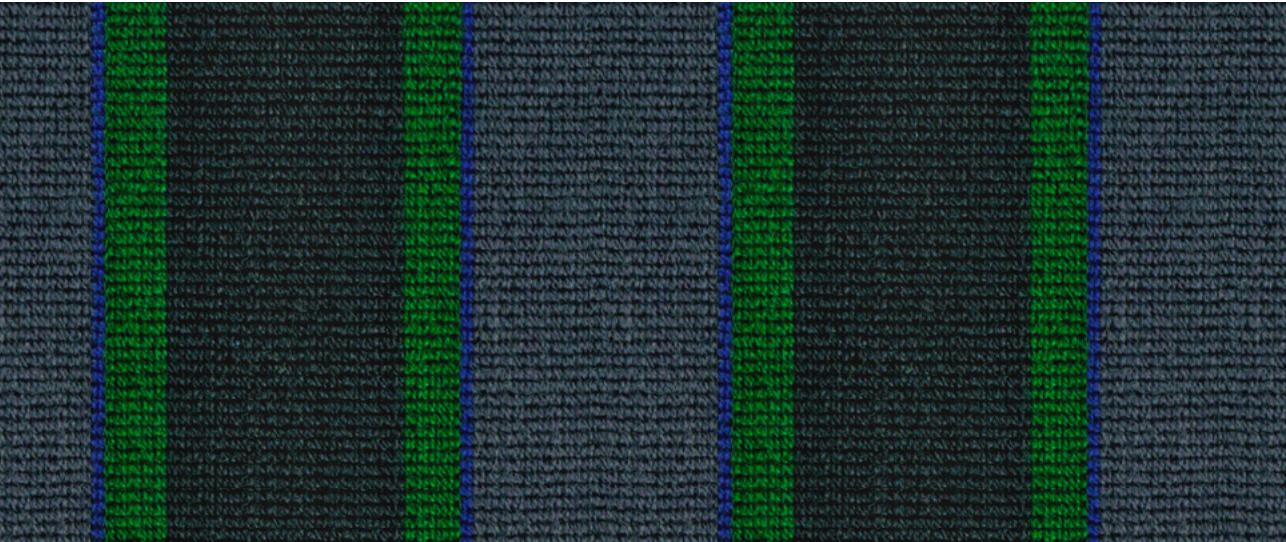


All colorways in this range are available with a MOQ of 350yd. Lead time available upon request.

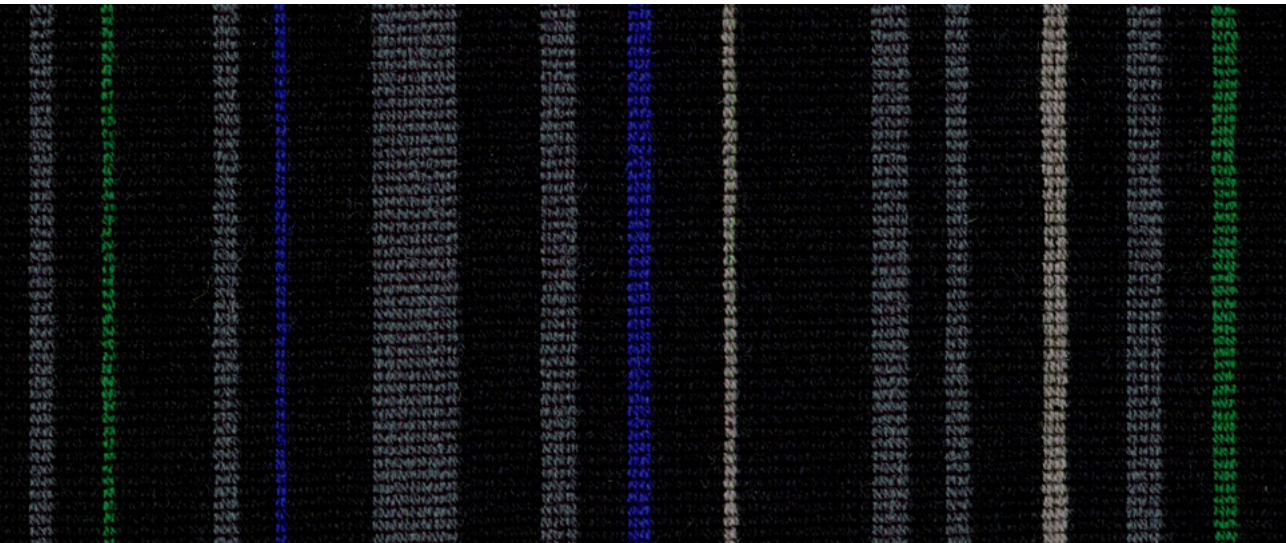
Please note: Hybrid is a made to order fabric. Alternative colorways and patterns can be created for you.



Smart  
HADD69



Connect  
HACD68



Autonomous  
HABD67



Transport  
seating



Year guarantee

Technical information

EN

Composition

Pile: 85% Wool, 15% Nylon  
Ground: 100% Cotton

Width

50 inches minimum

Weight

22<sup>1/4</sup> oz/sq yd ±5% (30<sup>3/4</sup> oz/running yd ±5%)

Thickness

0.105 inches ± 0.012 inches (BS 4051) (ISO 1765)

Abrasion Resistance

≥100,000 Martindale cycles (ISO 12947-2)

Flammability\*

FMVSS 302

With UIC (85) Backcoat:

DOCKET 90

*Note: Flammability performance is dependent on components used; full details are listed within our certificates. Customers must ensure their complete furniture meets the necessary standards.*

Light Fastness

6 (ISO 105 B02)

Fastness to Rubbing

Wet: 4, Dry: 4 (ISO 105 X12)

Cleaning

Vacuum regularly. Wipe clean with a damp cloth or shampoo using propriety upholstery shampoo.

\*Flammability performance is dependent on components used. FR post-treatments may be required to meet specific standards. Further information can be provided on request. Post treatments may change the technical performance and appearance of a product.

Batch to batch variations in shade may occur within commercial tolerances.

The Unregistered Design Rights and the Copyright in all designs are the exclusive property of Camira Fabrics Limited.

F

Composition

Surface: 85% Laine, 15% Nylon  
Couche Inférieure: 100% Cotton

Largeur

50 pouces minimum

Poids

22<sup>1/4</sup> oz/sq yd ±5% (30<sup>3/4</sup> oz/yd.lin ±5%)

Epaisseur

0.105 pouces ± 0.012 pouces (BS 4051) (ISO 1765)

Résistance à l'abrasion

≥100,000 Martindale tours (ISO 12947-2)

Flammabilité\*

FMVSS 302

Avec UIC (85) Backcoat:

DOCKET 90

*Notez: Les performances d'inflammabilité dépendent des composants utilisés; tous les détails sont énumérés dans nos certificats. Les clients doivent s'assurer que leur mobilier complet répond aux normes nécessaires.*

Solidité à la Lumière

6 (ISO 105 B02)

Solidité au Frottement

Mouillé: 4, Sec: 4 (ISO 105 X12)

Nettoyage

Aspirer régulièrement. Essuyer avec une étoffe humide ou nettoyer à l'aide d'un produit approprié pour tissus d'ameublement.

\*La performance d'inflammabilité dépend des composantes utilisées. Les traitements postérieurs FR peuvent être nécessaires pour respecter des normes spécifiques. Plus amples renseignements peuvent être fournis sur demande. Les traitements supplémentaires post-production peuvent altérer les performances techniques et l'apparence d'un produit.

Variations de coloris d'un bain à un autre peuvent se manifester.

Les Droits de Conception non-enregistrés et les droits d'auteur de tous les motifs sont la propriété exclusive de Camira Fabrics Limited.

ES

Composición

Superficie: 85% Lana, 15% Nylon  
Sustrato: 100% Cotton

Ancho

50 pulgadas mínimo

Peso

22<sup>1/4</sup> oz/sq yd ±5% (30<sup>3/4</sup> oz/lin.y ±5%)

Espesor

0.105 pulgadas ± 0.012 pulgadas (BS 4051) (ISO 1765)

Resistencia a la abrasión

≥100,000 Martindale tours (ISO 12947-2)

Inflamabilidad\*

FMVSS 302

Con UIC (85) Backcoat:

DOCKET 90

*Nota: El rendimiento de la Inflamabilidad depende de los componentes usados; todos los detalles se enumeran en nuestros certificados. Los clientes deben asegurarse de que todos sus muebles cumplan con los estándares necesarios.*

Solidez a la Luz

6 (ISO 105 B02)

Solidez al Rozamiento

Húmedo: 4, Seco: 4 (ISO 105 X12)

Limpieza

Limpiar con aspiradora frecuentemente. Bien lavar con un paño húmedo o con un champú apropiado para tapicería.

\*El rendimiento de la inflamabilidad depende de los componentes utilizados. Post-tratamientos de FR pueden ser requeridos para cumplir con estándares específicos. Más información se puede proporcionar a petición. Los tratamientos adicionales pueden cambiar el rendimiento técnico y la apariencia de un producto.

Cada tintada puede tener pequeñas variaciones en el tono dentro de las tolerancias comerciales aceptadas.

Los derechos sobre los diseños no registrados y los derechos de autor en todos los diseños son propiedad exclusiva de Camira Fabrics Limited.