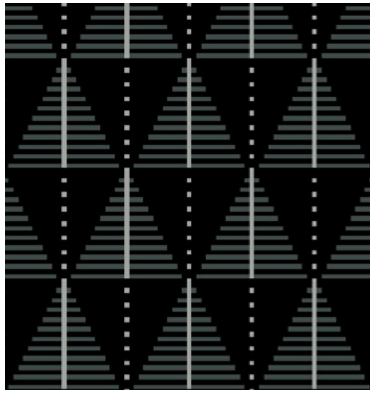
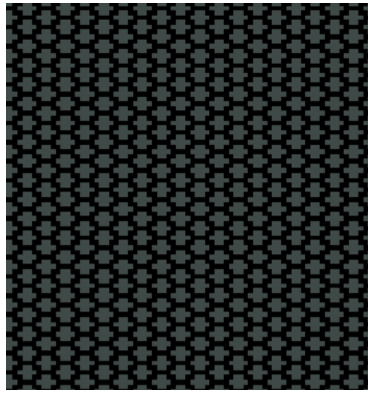


Hybrid: 2.0

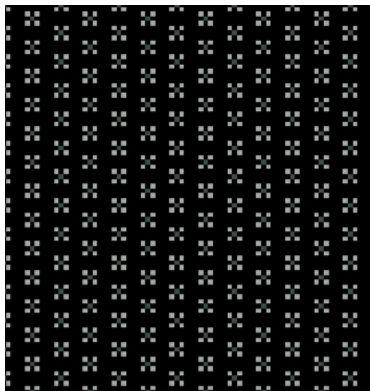
Designed with the streamlined precision of a sports car, Hybrid 2.0 is destined to transform transport interiors with its contemporary look and feel. The aesthetics of a flat-woven fabric with the durability of a moquette, this perfectly refined textile has a wool rich composition, which is both natural and beautifully tactile. An all-loop face delivers high traffic performance, in a lighter weight construction to withstand the demands of today's transport world. Wire-woven using British wool, Hybrid 2.0 is robust, lightweight, and stylishly sustainable. This collection incorporates both plains and jacquard designs.



ELPF18



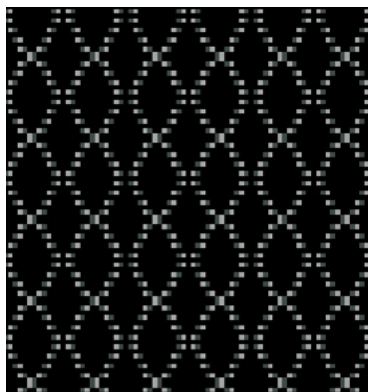
ELLF14



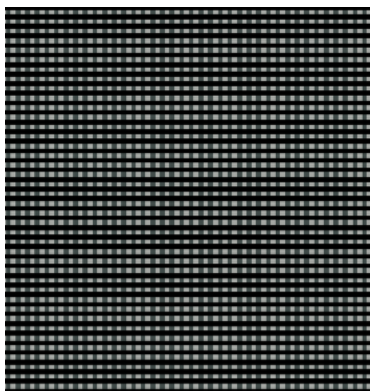
ELQF22



HAAD57



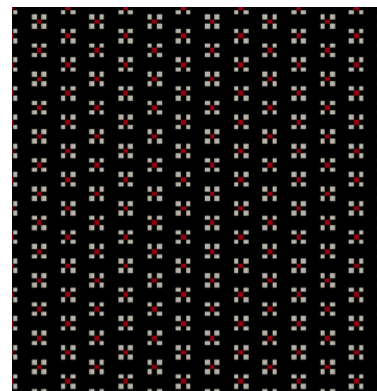
ELTF26



ELSF26

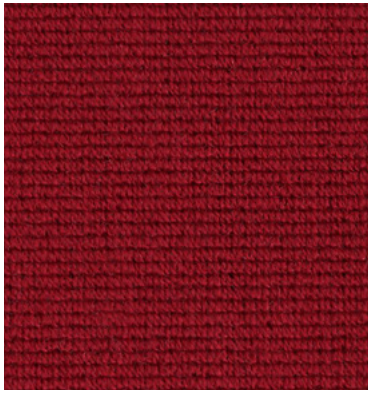


HAAD55

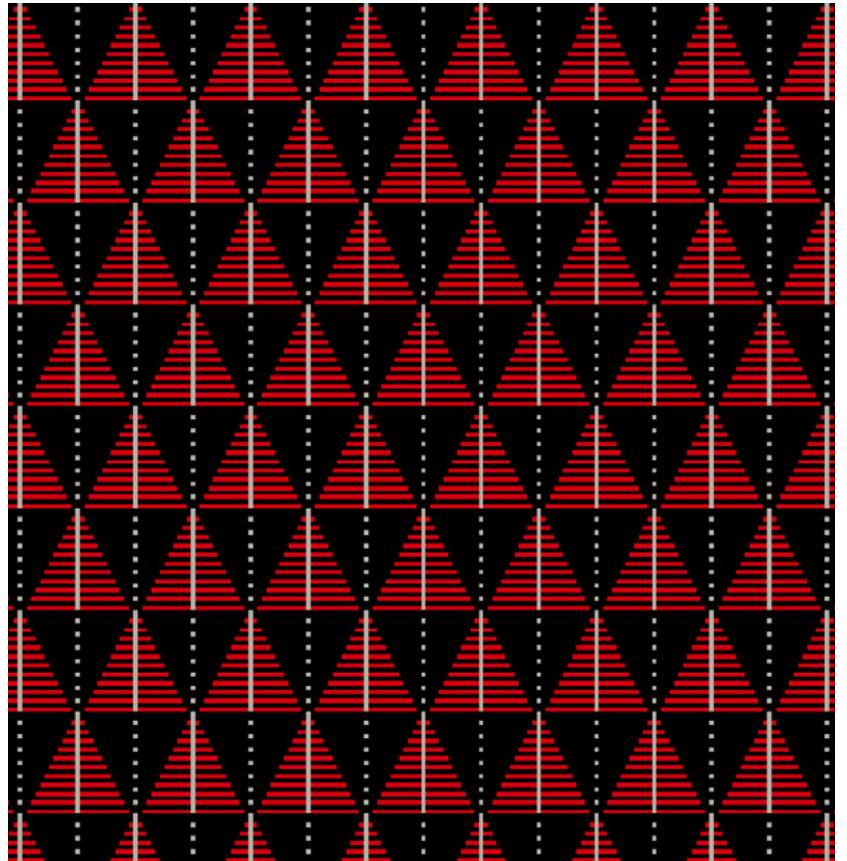


ELXF36

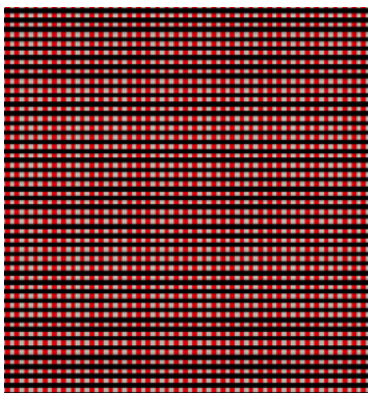
Photographic fabric scans are not color accurate. Always request actual fabric samples before ordering.



HAAD63



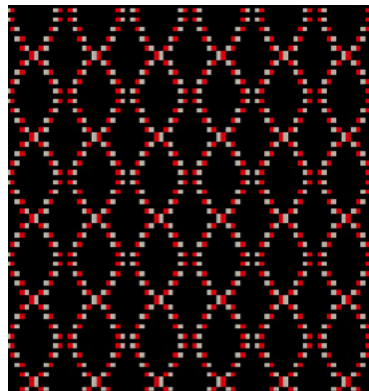
ELVF32



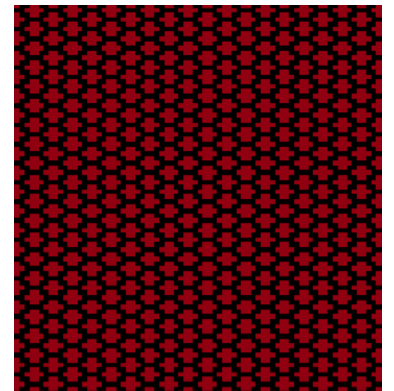
ELZF40



HAAD52



EMAF40



ELKF16



Technical information

EN

Composition
Hybrid (HAAD) codes:
Pile: 85% Wool, 15% Nylon
Ground: 100% Cotton
Hybrid Next Gen (EL & EM) codes:
Pile: 85% Wool, 15% Nylon
Ground: 77% Cotton, 15% Polyester, 8% Viscose

Width
59 inches minimum

Weight
Hybrid (HAAD) codes:
22^{1/4} oz/sq yd ±5% (36^{1/4} oz/running yd ±5%)
Hybrid Next Gen (EL & EM) codes:
23^{3/4} oz/sq yd ±5% (39 oz/running yd ±5%)

Thickness
0.105 inches ± 0.012 inches (BS 4051) (ISO 1765)

Abrasion Resistance
Hybrid (HAAD) codes:
≥100,000 Martindale cycles (ISO 12947-2)
Hybrid Next Gen (EL & EM) codes:
≥100,000 Martindale cycles (ISO 12947-2)

Flammability*
FMVSS 302
With UIC (85) Backcoat:
DOCKET 90
Note: Flammability performance is dependent on components used; full details are listed within our certificates. Customers must ensure their complete furniture meets the necessary standards.

Light Fastness
6 (ISO 105 B02)

Fastness to Rubbing
Wet: 4, Dry: 4 (ISO 105 X12)

Cleaning
Vacuum regularly. Wipe clean with a damp cloth or shampoo using propriety upholstery shampoo.

*Flammability performance is dependent on components used. FR post-treatments may be required to meet specific standards. Further information can be provided on request. Post treatments may change the technical performance and appearance of a product.

Batch to batch variations in shade may occur within commercial tolerances.

The Unregistered Design Rights and the Copyright in all designs are the exclusive property of Camira Fabrics Limited.

F

Composition
Codes pour Hybrid (HAAD):
Surface: 85% Laine, 15% Nylon
Couche Inférieure: 100% Cotton
Codes pour Hybrid Next Gen (EL & EM):
Surface: 85% Laine, 15% Nylon
Couche Inférieure: 77% Cotton, 15% Polyester, 8% Viscose

Largeur
59 pouces minimum

Poids
Codes pour Hybrid (HAAD):
22^{1/4} oz/sq yd ±5% (36^{1/4} oz/yd.lin ±5%)
Codes pour Hybrid Next Gen (EL & EM):
23^{3/4} oz/sq yd ±5% (39 oz/yd.lin ±5%)

Epaisseur
0.105 pouces ± 0.012 pouces (BS 4051) (ISO 1765)

Résistance à l'abrasion
Codes pour Hybrid (HAAD):
≥100,000 Martindale tours (ISO 12947-2)
Codes pour Hybrid Next Gen (EL & EM):
≥100,000 Martindale cycles (ISO 12947-2)

Flammabilité*
FMVSS 302
Avec UIC (85) Backcoat:
DOCKET 90
Notez: Les performances d'inflammabilité dépendent des composants utilisés; tous les détails sont énumérés dans nos certificats. Les clients doivent s'assurer que leur mobilier complet répond aux normes nécessaires.

Solidité à la Lumière
6 (ISO 105 B02)

Solidité au Frottement
Mouillé: 4, Sec: 4 (ISO 105 X12)

Nettoyage
Aspirer régulièrement. Essuyer avec une étoffe humide ou nettoyer à l'aide d'un produit approprié pour tissus d'ameublement.

*La performance d'inflammabilité dépend des composantes utilisées. Les traitements postérieurs FR peuvent être nécessaires pour respecter des normes spécifiques. Plus amples renseignements peuvent être fournis sur demande. Les traitements supplémentaires post-production peuvent altérer les performances techniques et l'apparence d'un produit.

Variations de coloris d'un bain à un autre peuvent se manifester.

Les Droits de Conception non-enregistrés et les droits d'auteur de tous les motifs sont la propriété exclusives de Camira Fabrics Limited.

ES

Composición
Hybrid (HAAD) códigos:
Superficie: 85% Lana, 15% Nylon
Sustrato: 100% Cotton
Hybrid Next Gen (EL & EM) códigos:
Superficie: 85% Lana, 15% Nylon
Sustrato: 77% Cotton, 15% Poliéster, 8% Viscosa

Ancho
59 pulgadas mínimo

Peso
Hybrid (HAAD) códigos:
22^{1/4} oz/sq yd ±5% (36^{1/4} oz/lin.y ±5%)
Hybrid Next Gen (EL & EM) códigos:
23^{3/4} oz/sq yd ±5% (39 oz/lin.y ±5%)

Espesor
0.105 pulgadas ± 0.012 pulgadas (BS 4051) (ISO 1765)

Resistencia a la abrasión
Hybrid (HAAD) códigos:
≥100,000 Martindale tours (ISO 12947-2)
Hybrid Next Gen (EL & EM) códigos:
≥100,000 Martindale cycles (ISO 12947-2)

Inflamabilidad*
FMVSS 302
Con UIC (85) Backcoat:
DOCKET 90
Nota: El rendimiento de la Inflamabilidad depende de los componentes usados; todos los detalles se enumeran en nuestros certificados. Los clientes deben asegurarse de que todos sus muebles cumplan con los estándares necesarios.

Solidez a la Luz
6 (ISO 105 B02)

Solidez al Rozamiento
Húmedo: 4, Seco: 4 (ISO 105 X12)

Limpieza
Limpiar con aspiradora frecuentemente. Bien lavar con un paño húmedo o con un champú apropiado para tapicería.

*El rendimiento de la inflamabilidad depende de los componentes utilizados. Post-tratamientos de FR pueden ser requeridos para cumplir con estándares específicos. Más información se puede proporcionar a petición. Los tratamientos adicionales pueden cambiar el rendimiento técnico y la apariencia de un producto.

Cada tintada puede tener pequeñas variaciones en el tono dentro de las tolerancias comerciales aceptadas.

Los derechos sobre los diseños no registrados y los derechos de autor en todos los diseños son propiedad exclusiva de Camira Fabrics Limited.