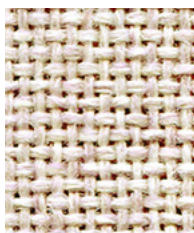
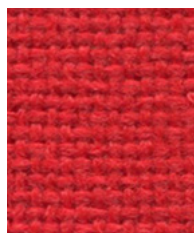


Cara

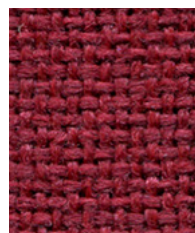
Cara is a plain weave panel fabric available in a wide selection of commercial colourways. One of our most popular vertical surface fabrics, Cara is used extensively on desk screens, wallsides and on pin boards. This fabric is largely acoustically transparent and as such is ideal to be used as a decorative facing for sound absorbing boards.



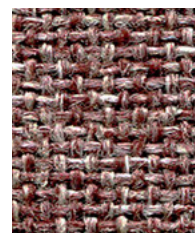
Clan
EJ169



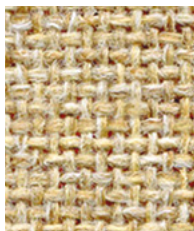
Pitlochry
EJ076



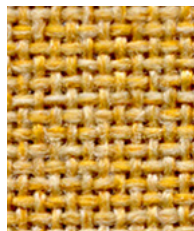
Tummel
EJ038



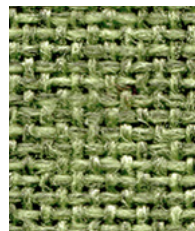
Lossie
EJ197



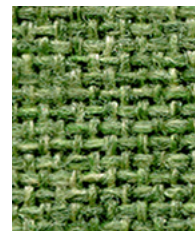
Austen
EJ173



Maree
EJ195



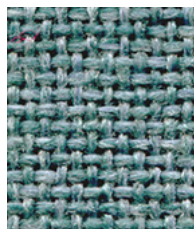
Fair Isle
EJ186



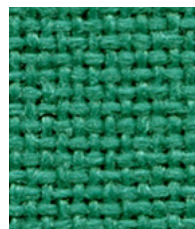
Staffa
EJ185



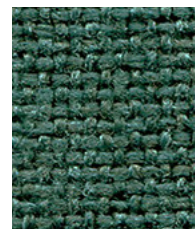
Glass
EJ004



Ronay
EJ189



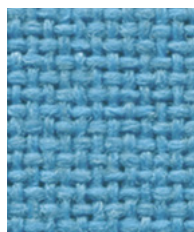
Carron
EJ015



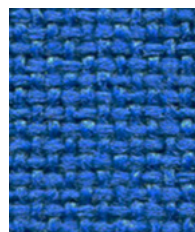
Lora
EJ187



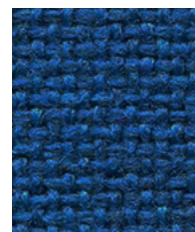
Dolphin
EJ105



Inverness
EJ175



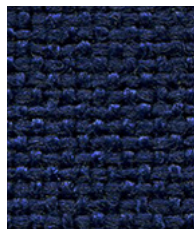
Galilee
EJ125



Cluanie
EJ180



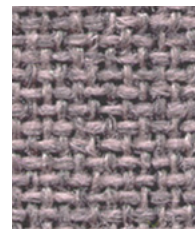
Adriatic
EJ154



Walten
EJ011



Easdale
EJ188

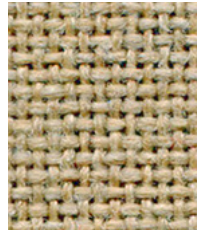


Denny
EJ196

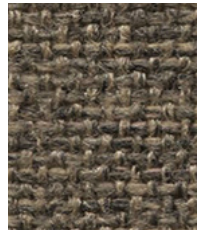
Photographic fabric scans are not colour accurate. Always request actual fabric samples before ordering.



Vit
EJ184



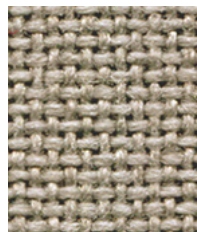
Beltane
EJ193



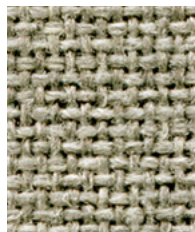
Lerwick
EJ194



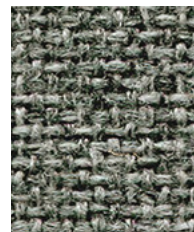
Lomond
EJ192



Shetland
EJ191



Spray
EJ033



Portland
EJ016



Merrick
EJ048



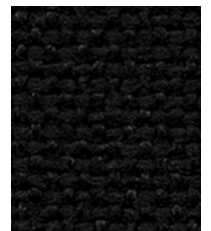
Chaucer
EJ172



Hillswick
EJ190



Lead
EJ104



Black
EJ138

Cara



Panels



SBI



Acoustic



Bleach
cleanable



10
Year guarantee

Technical Information

Composition

100% Polypropylene

Environment

Certified to the EU Ecolabel

Certified to Indoor Advantage™ Gold

Width

170cm minimum

Weight

220g/m² ±5% (374g/lin.m ±5%)

Light Fastness

6 (ISO 105 - B02)

Fastness to Rubbing

Wet: 4, Dry: 4 (ISO 105 - X12)

Bleach cleanable

ISO 105 E03 colour change 4 for dilution factor 1:4 chlorine solution

Acoustic Properties

Acoustically transparent. Acoustic graphs available upon request

Cleaning

Vacuum regularly. Wipe with a damp cloth using a proprietary upholstery shampoo/soap. For deeper cleaning use bleach or alcohol. Full details can be found in our cleaning and disinfection guide.

Flammability

EN 1021-1 (cigarette)

EN 13501-1 Adhered Class B, s2, d0

EN 13501-1 Un-adhered Class B, s1, d0

Note: Flammability performance is dependent on components used; full details are listed within our certificates. Customers must ensure their complete furniture meets the necessary standards.

Please note that seam performance is dependent on seam construction and needle and thread type. We recommend that appropriate sewing advice be taken. Batch to batch variations in shade may occur within commercial tolerances. We reserve the right to alter technical specifications without notice. The Unregistered Design Rights and the Copyright in all designs are the exclusive property of Camira Fabrics Limited.

www.camirafabrics.com



Scan für technische Daten in Deutsch
Scanner pour la spécification en français
Escaneen para obtener las especificaciones en español

EJ (TSR9) 0524 CP



Panels



SBI



Acoustic



Bleach
cleanable



Year guarantee

Technical information

UK

Composition

100% Polypropylene

Environment

Certified to the EU Ecolabel
Certified to Indoor Advantage™ Gold

Width

170 cm minimum

Weight

220 g/m² ±5% (374 g/lin.m ±5%)

Flammability

EN 1021-1 (cigarette)
EN 13501-1 Adhered Class B, s2, d0
EN 13501-1 Un-adhered Class B, s1, d0
Note: Flammability performance is dependent on components used; full details are listed within our certificates. Customers must ensure their complete furniture meets the necessary standards.

Light Fastness

6 (ISO 105 - B02)

Fastness to Rubbing

Wet: 4, Dry: 4 (ISO 105 - X12)

Bleach Cleanable

ISO 105 E03 colour change 4 for dilution factor 1:4 chlorine solution

Acoustic Properties

Acoustically transparent. Acoustic graphs available upon request

Cleaning

Vacuum regularly. Wipe with a damp cloth using a proprietary upholstery shampoo/soap. For deeper cleaning use bleach or alcohol. Full details can be found in our cleaning and disinfection guide.

Please note that seam performance is dependent on seam construction and needle and thread type. We recommend that appropriate sewing advice be taken.

Batch to batch variations in shade may occur within commercial tolerances. We reserve the right to alter technical specifications without notice. The Unregistered Design Rights and the Copyright in all designs are the exclusive property of Camira Fabrics Limited.

D

Zusammensetzung

100% Polypropylen

Umweltfreundlich

Nach Zertifikat EU Ecolabel
Nach Zertifikat Indoor Advantage™ Gold

Breite

170 cm nutzbare Breite

Gewicht

220 g/m² ±5% (374 g/ldf.m ±5%)

Feuersicherung

EN 1021 - 1 (Zigarettestest)
EN 13501-1 Adhered Class B, s2, d0
EN 13501-1 Un-adhered Class B, s1, d0
Bemerkung: Die Entflammbarkeit hängt von den verwendeten Komponenten ab ; die Details sind in unseren Zertifikaten beschrieben. Der Kunde muss sicherstellen, dass das gesamte Möbelstück die erforderlichen Normen erfüllt.

Lichtechtheit

6 (ISO 105 - B02)

Reibechtheit

Nass: 4, Trocken: 4 (ISO 105 - X12)

Chlorbleiche-Beständig

ISO 105 E03 Farbänderung 4 bei einer 1:4 verdünnten Chlor-Lösung

Akustische Eigenschaften

Akustisch durchlässig. Akustische Messwerte auf Anfrage

Reinigung

Regelmässig absaugen. Mit einem feuchten Tuch abwischen oder mit einem geeigneten Polstershampoo behandeln. Für eine Grundreinigung bitte Chlorbleiche oder Alkohol verwenden. Weitere Informationen finden Sie in unserem Leitfaden zur Reinigung und Desinfektion.

Eine optimale Nahtausreissfestigkeit hängt von der Nahtfähe, der verwendeten Nadel und dem Näh-Garn ab. Wir empfehlen daher Nähversuche durchzuführen.

Handelsübliche Farbabweichungen können auftreten und berechtigen nicht zur Reklamation. Wir behalten uns die Änderung technischer Spezifikationen vor. Die registrierten und nicht registrierten Urheberrechte der Dessinierungen sind ausschliessliches Eigentum der Camira Fabrics Limited.

F

Composition

100% Polypropylène

Écologique

Avec le certificat EU Ecolabel
Certifié à Indoor Advantage™ Gold

Largeur

170 cm minimum

Poids

220 g/m² ±5% (374 g/m.l ±5%)

Flammabilité

EN 1021 - 1 (cigarette)
EN 13501-1 Adhered Class B, s2, d0
EN 13501-1 Un-adhered Class B, s1, d0
Notez: Les performances d'inflammabilité dépendent des composants utilisés; tous les détails sont énumérés dans nos certificats. Les clients doivent s'assurer que leur mobilier complet répond aux normes nécessaires.

Solidité à la lumière

6 (ISO 105 - B02)

Solidité au Frottement

Mouillé: 4, Sec: 4 (ISO 105 - X12)

Nettoyable au javel

ISO 105 E03 changement de couleur 4 pour le facteur de dilution 1: 4 solution de chlore

Propriétés Acoustiques

Acoustiquement transparent. Graphiques acoustiques disponibles sur demande

Nettoyage

Passez l'aspirateur régulièrement. Essayez avec un chiffon humide en utilisant un shampooing/savon pour tissus d'ameublement exclusif. Pour un nettoyage en profondeur, utilisez de la javel ou alcool. Vous trouverez tous les détails dans notre guide de nettoyage et de désinfection.

Veillez noter que la performance du joint dépend de sa construction ainsi que de l'aiguille et du type de fil utilisés.

Une variation de couleurs peut provenir (commerciallement tolérable). Nous réservons le droit de changer les spécifications techniques sans préavis. Les Droits de Conception non-enregistrés et les droits d'auteur de tous les motifs sont la propriété exclusive de Camira Fabrics Limited.

ES

Composición

100% Polipropileno

Ambiental

Certificado con EU Ecolabel
Certificado de Indoor Advantage™ Gold

Ancho

170 cm mínimo

Peso

220 g/m² ±5% (374 g/lin.m ±5%)

Inflamabilidad

EN 1021 - 1 (cigarillo)
EN 13501-1 Adhered Class B, s2, d0
EN 13501-1 Un-adhered Class B, s1, d0
Nota: El rendimiento de la Inflamabilidad depende de los componentes usados; todos los detalles se enumeran en nuestros certificados. Los clientes deben asegurarse de que todos sus muebles cumplan con los estándares necesarios.

Solidez a la luz

6 (ISO 105 - B02)

Solidez al rozamiento

Húmedo: 4, Seco: 4 (ISO 105 - X12)

Posibilidad lavado con Lejía

ISO 105 E03 cambio color 4 para un factor de disolución 1:4 solución cloro

Acústico Propiedades

Acústicamente transparente. Gráficos disponibles bajo petición

Limpieza

Uso aspirador regularmente. Limpiar con un trapo usando jabón y agua o producto limpieza para tapicerías. Para una limpieza más profunda use lejía o alcohol. Los detalles completos se encuentran en nuestra guía de limpieza y desinfección.

Tenga en cuenta que el rendimiento de la costura depende de la construcción de la costura, además de la aguja y del tipo de rosca. Le recomendamos que se aconsejen para coser la costura.

Las variaciones de lote a lote en la sombra se puede producir dentro de tolerancias comerciales. Nos reservamos el derecho a efectuar modificaciones técnicas sin previo aviso. Los derechos sobre los diseños no registrados y los derechos de autor en todos los diseños son propiedad exclusiva de Camira Fabrics Limited.

