

# Patternmaker

100% Virgin Wool | 4 Designs

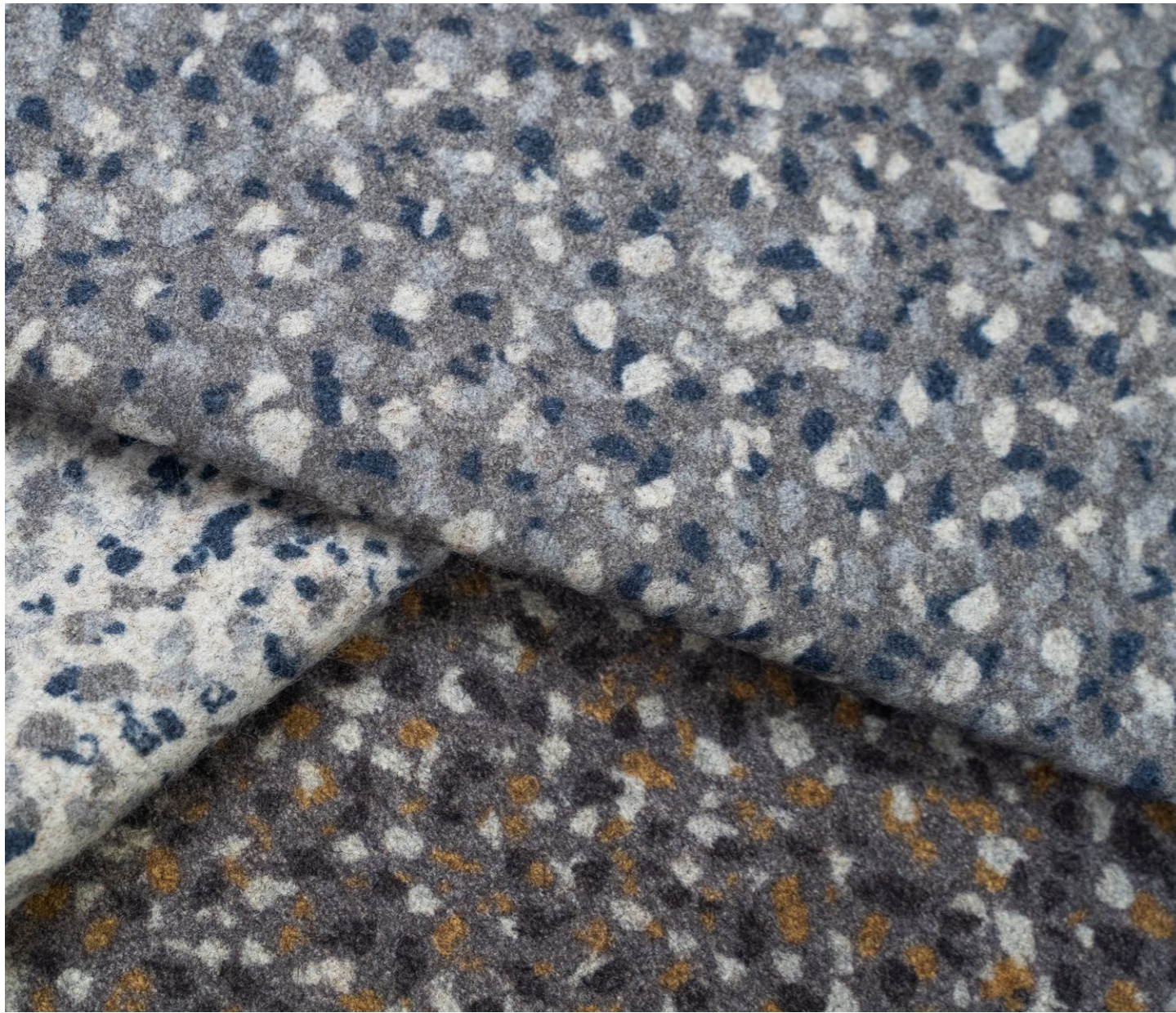
**camira**



Using state-of-the-art digital printing technology and created in collaboration with renowned textile designer, Kate Lawrie, Patternmaker's four contemporary designs, Crosshatch, Dot Dash, Hula and Speckle, are brought to life on our felted wool fabric. Blending sustainability with style, Patternmaker combines rich warm neutrals with cool slate blues, to inject pattern and personality into hospitality, commercial and residential settings.



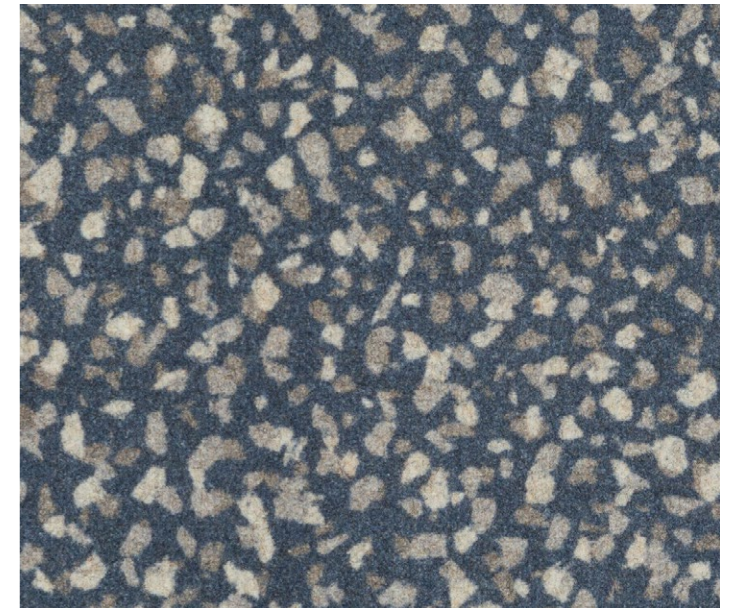




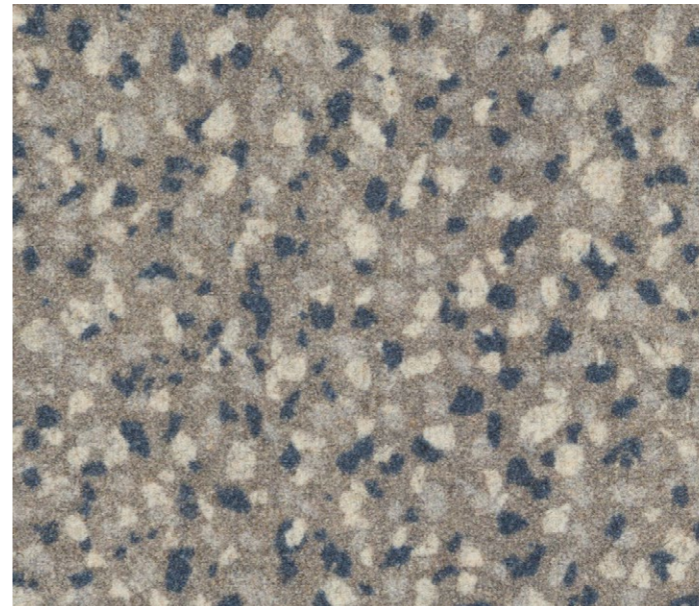
**Blazer**  
Newcastle, CUZ1W



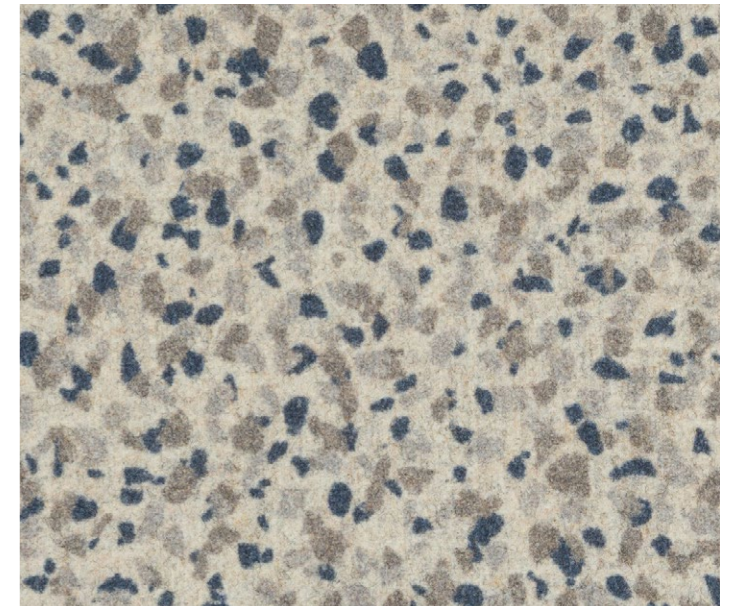
**Blazer**  
Dartmouth, CUZ2Q



**Speckle**  
PMS09



**Speckle**  
PMS08



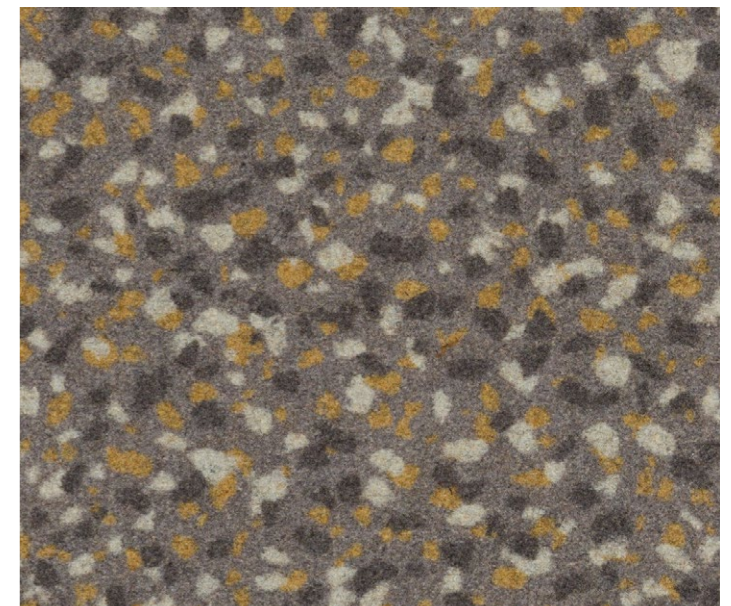
**Speckle**  
PMS07

**Top:**  
Speckle  
PMS07, PMS08, PMS10

**Right:**  
Pattern Repeat  
Speckle, PMS10



**Speckle**  
PMS11



**Speckle**  
PMS10





**Crosshatch**  
PMC08



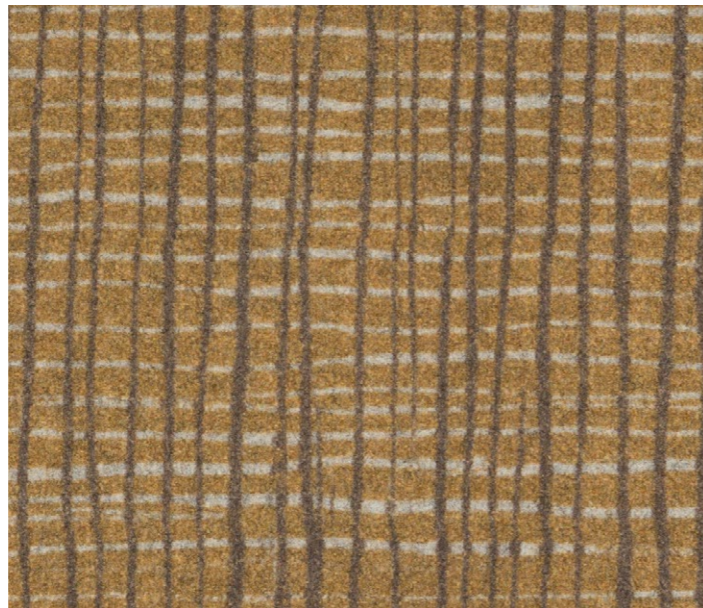
**Crosshatch**  
PMC09



**Blazer**  
Trevelyan, CUZ31



**Blazer**  
Surrey, CUZ1E



**Crosshatch**  
PMC12



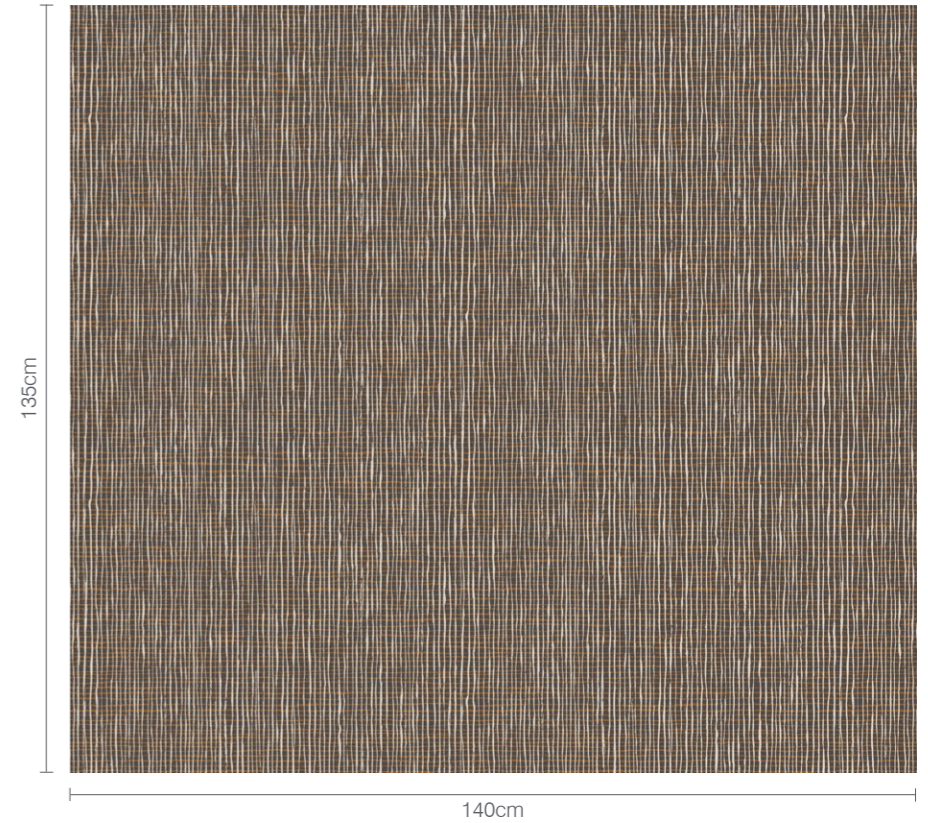
**Crosshatch**  
PMC11



**Crosshatch**  
PMC10

**Bottom:**  
Crosshatch  
PMC08, PMC09, PMC10, PMC11

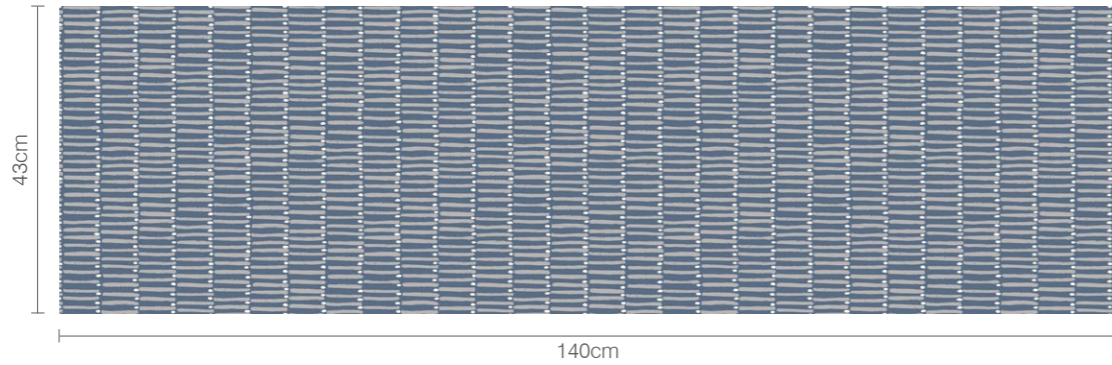
**Right:**  
Pattern Repeat  
Crosshatch, PMC11





**Bottom:**  
Dot Dash  
PMD09, PMD11

**Right:**  
Pattern Repeat  
Dot Dash, PMD07



**Dot Dash**  
PMD07



**Dot Dash**  
PMD08



**Dot Dash**  
PMD09



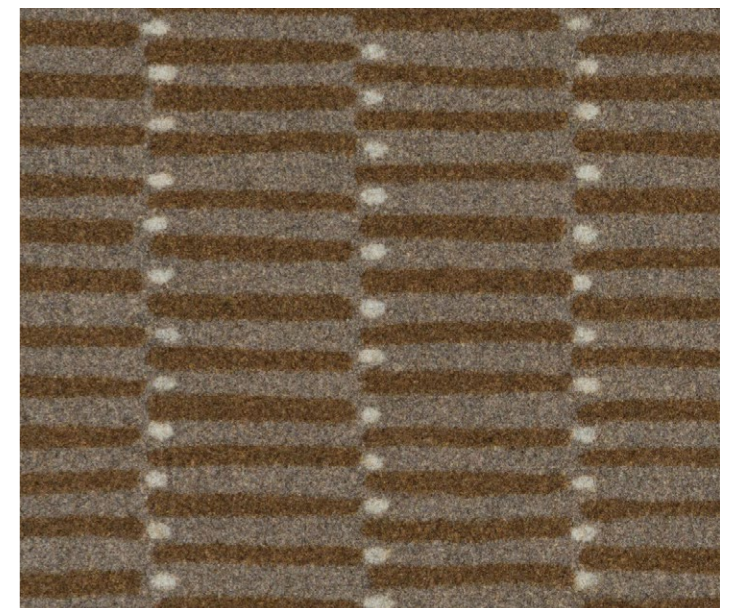
**Dot Dash**  
PMD10



**Blazer**  
Aberlour, CUZ1J



**Blazer**  
Dartmouth, CUZ2Q



**Dot Dash**  
PMD11





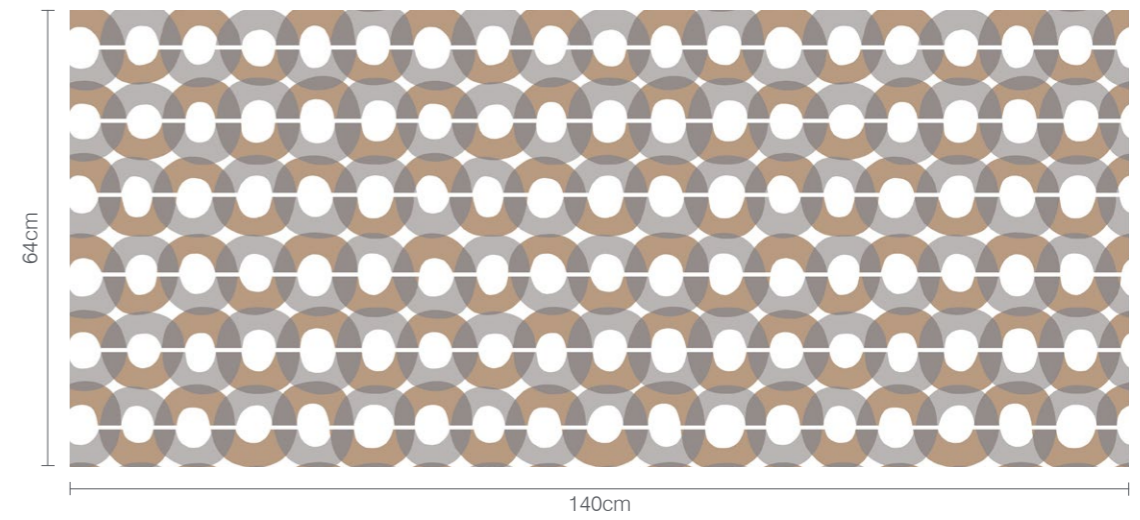
**Hula**  
PMH04



**Hula**  
PMH05

**Top:**  
Hula  
PMH04, PMH05

**Right:**  
Pattern Repeat  
Hula, PMH05





## Lynn Kingdon and Kate Lawrie – in conversation

Camira Head of Creative, Lynn, and textile artist and designer, Kate, have worked in tandem to portray the best of woven and digital print in Patternmaker. Click the button below to hear them in conversation together, exploring the design themes which inspire the four patterns and how these have been translated through innovation in digital print on wool.

[▶ Watch Here](#)





# Patternmaker



## Technical Information - Q217

### Composition

100% Virgin Wool

### Environment

Certified to the EU Ecolabel  
Certified to Indoor Advantage™ Gold

### Width

140 cm minimum

### Weight

460 g/m<sup>2</sup> ±5% (644 g/lin.m ±5%)

### Pattern Repeat

PMC: Width: 140 cm, Length: 135 cm ±5%  
PMD: Width: 140 cm, Length: 43 cm ±5%  
PMH: Width: 140 cm, Length: 64 cm ±5%  
PMS: Width: 140 cm, Length: 78.5 cm ±5%

### Abrasion Resistance\*

Heavy duty / 5 year guarantee  
Independently certified to ≥45,000 Martindale cycles

### Light Fastness

5 (ISO 105 - B02)

### Fastness to Rubbing

Wet: 4, Dry: 4 (ISO 105 - X12)

### Acoustic Properties

Acoustically transparent. Acoustic graphs available upon request.

### Cleaning

Vacuum regularly. Wipe with a damp cloth using a proprietary upholstery shampoo/soap. For deeper cleaning use steam or professionally dry clean. Full details can be found in our cleaning and disinfection guide.

### Flammability

EN 1021 - 1 (cigarette)  
EN 1021 - 2 (match)  
BS 7176 Low Hazard  
NF D 60-013  
ÖNORM B 3825 & A 3800-1 (over CMHR 58kg/m<sup>3</sup> Foam)  
UNI 9175 Classe 1 IM  
EN 13501-1 Adhered Class C, s1, d0  
IMO FTP Code (Part 8)  
The Furniture and Furnishing (Fire Safety) Regulations 1988 (UK domestic cigarette and match)  
California Technical Bulletin 117  
NFPA 260 + UFAC Class 1  
ASTM E84 Class 1 or A (Adhered)  
ASTM E84 Class 2 or B (Un-adhered)

### With NitroPhlam365:

BS 5852 Ignition Source 5  
BS 7176 Medium Hazard

### With FR Treatment (Z):

EN 13501-1 Adhered Class B, s1, d0

### With FR Treatment (Gorts):

BS 5867-2: Type B Curtains & Drapes  
IMO FTP Code (Part 7)  
ASTM E84 Class 1 or A (Un-adhered)  
NFPA 701

*Note: Flammability performance is dependent on components used. Our certificates show what substrates have been used in our tests. For composite tests customers must ensure their complete furniture meets the necessary standards.*

\*Abrasion testing produces a wide variability of results even from the same test sample. The independent certificate of ≥45,000 cycles is available on our website or from our customer service team. Internally we specify this product at >20,000 cycles which we believe is realistic for repeatability of testing. Please be aware that abrasion testing alone is not a reliable indicator of the actual wear performance of fabrics. We're so confident in the durability of our products that we provide a robust 5 year guarantee (full details available). Please note that seam performance is dependent on seam construction and needle and thread type. We recommend that appropriate sewing advice be taken. Batch to batch variations in shade may occur within commercial tolerances. We reserve the right to alter technical specifications without notice. The Unregistered Design Rights and the Copyright in all designs are the exclusive property of Camira Fabrics Limited.

[www.camirafabrics.com](http://www.camirafabrics.com)



Scan für technische Daten in Deutsch  
Scanner pour la spécification en français  
Escaneen para obtener las especificaciones en español

HPMC HPMD HPMH HPMS (TSR3)







**camira**

[www.camirafabrics.com](http://www.camirafabrics.com)