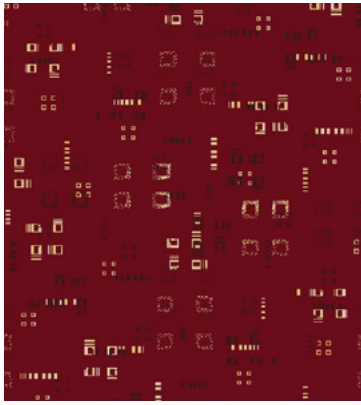
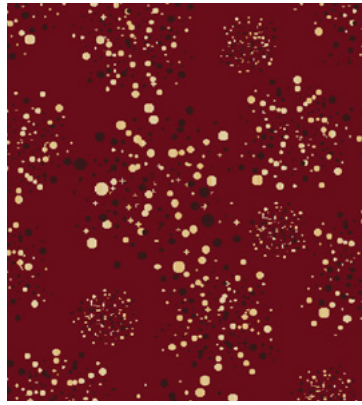


Orient

camira



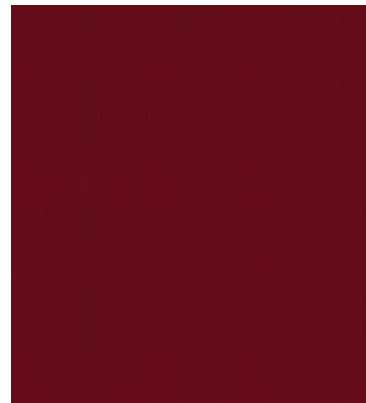
AADC71



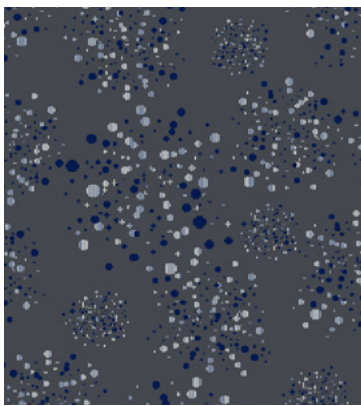
AJAC71



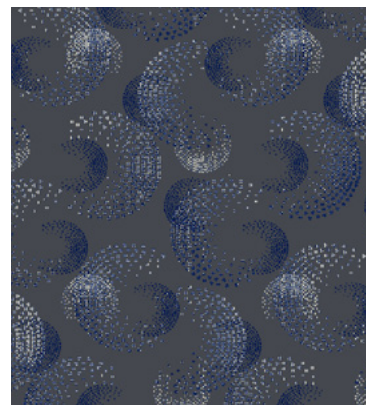
AAVC71



AALC71



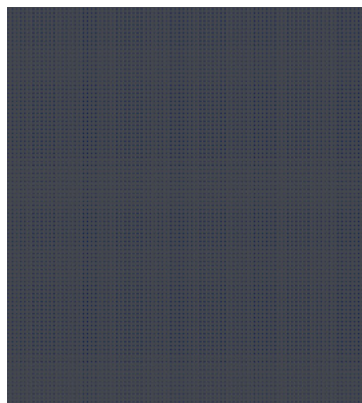
AJAC72



AAVC72

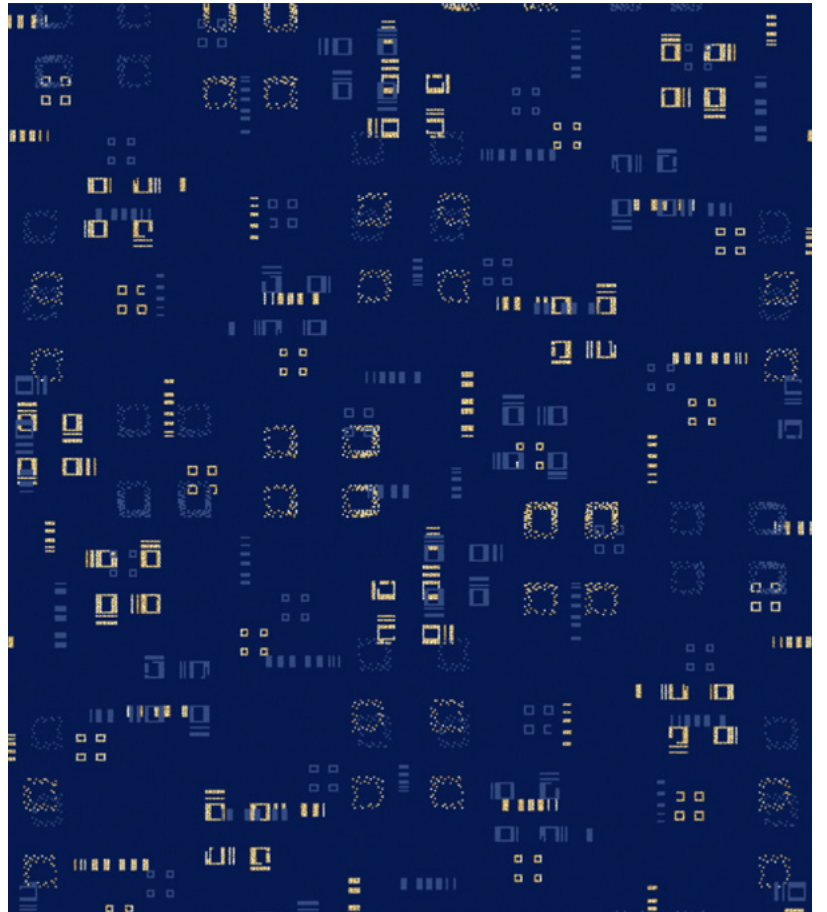


AADC72

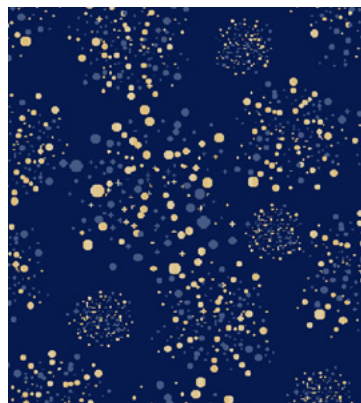


AALC72

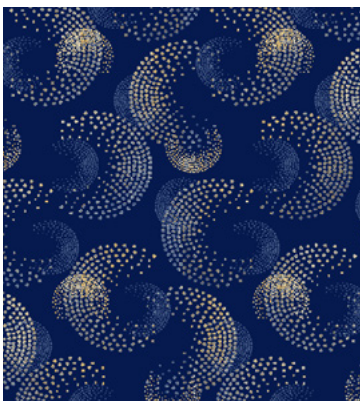
Photographic fabric scans are not colour accurate. Always request actual fabric samples before ordering.



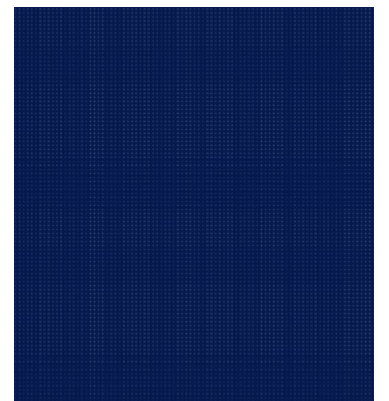
AAD303



AJA303



AAV303



AAL303

Transport
seating

Year guarantee

Orient is a collection of lightweight polyester fabrics including three abstract patterns and one plain, available in three classic colourways. The patterned fabrics incorporate a textured yarn to give a three dimensional appearance and with trend focused colours, the fabrics hold a contemporary look and soft finish while retaining durability and performance.

Technical information

UK

Composition

Pile: 100% Polyester
Ground: 67% Polyester, 33% Rayon

Width

150 cm minimum

Weight

590 g/m² ±5% (885 g/lin.m ±5%)

Thickness

3.0±0.3 mm (BS 4051) (ISO 1765)

Abrasion Resistance

Heavy duty / 5 year guarantee
Independently certified to ≥80,000 Martindale cycles

Flammability

FMVSS 302

Light Fastness

6 (EN ISO 105 B02)

Fastness to Rubbing

Wet: 4, Dry: 4 (ISO 105 X12)

Maintenance

Vacuum regularly. Wipe clean with a damp cloth or shampoo using proprietary upholstery shampoo.

We reserve the right to alter technical specifications without notice. The Unregistered Design Rights and the Copyright in all designs are the exclusive property of Camira Fabrics Limited.

Batch to batch variations in shade may occur within commercial tolerances.

D

Zusammensetzung

Oberfläche: 100% Polyester
Trägergewebe: 67% Polyester, 33% Rayon

Breite

150 cm minimum

Gewicht

590 g/m² ±5% (885 g/lfd.m ±5%)

Dicke

3.0±0.3 mm (BS 4051) (ISO 1765)

Scheuerfestigkeit

Schwerer Objekteinsatz / 5 Jahre Garantie
Extern zertifiziert mit ≥80,000 Scheuertouren Martindale

Feuersicherung

FMVSS 302

Lichtechtheit

6 (EN ISO 105 B02)

Reibechtheit

Wet: 4, Dry: 4 (ISO 105 X12)

Reinigung

Regelmässig staubsaugen. Dazu mit einem feuchten Tuch abwischen, oder mit einem speziellen Polsterschaum behandeln.

Wir behalten uns die Änderung technischer Spezifikationen vor. Die registrierten und nicht registrierten Urheberrechte der Dessinierungen sind ausschliessliches Eigentum der Camira Fabrics Limited.

Handelsübliche Farbabweichungen vorbehalten.

F

Composition

Surface: 100% Polyester
Couche Inférieure: 67% Polyester, 33% Rayon

Largeur

150 cm minimum

Poids

590 g/m² ±5% (885 g/m.l ±5%)

Epaisseur

3.0±0.3 mm (BS 4051) (ISO 1765)

Résistance à l'abrasion

Usage intense / garantie 5 ans
Certificat indépendant ≥80,000 cycles Martindale

Flammabilité

FMVSS 302

Solidité à la lumière

6 (EN ISO 105 B02)

Solidité au Frottement

Wet: 4, Dry: 4 (ISO 105 X12)

Nettoyage

Aspirer régulièrement. Essuyer avec une étoffe humide ou nettoyer à l'aide d'un produit approprié pour tissus d'ameublement.

Nous réservons le droit de changer les spécifications techniques sans préavis. Les Droits de Conception non-enregistrés et les droits d'auteur de tous les motifs sont la propriétés exclusives de Camira Fabrics Limited.

Variations de coloris d'un bain à un autre peuvent se manifester.