



Colour Manifesto

camira

01

Deep Time

These carefully crafted slow colours are timeless, seasonless and everlasting. Woodland shades of tree bark and soft oak create a warming, natural foundation upon which to overlay tones of green moss, fern and lichen.

Humble

A gentle collection of colours from washed shell pinks and weather-worn grey tinted blues. Soft humble tones are inspired by pebbles, rock formations and feathers; yarn twists and blends offer subtle textures and elegant imperfections.

03

02

Reclamation

Decorative architectural details of Lisbon inspire a treasure box of graphic colour combinations; vintage and ornate surfaces play with joyous tones of pine greens and fiery paprika red. Underpin with a warm blush to soften the palette.

04

Elemental

Deep and dramatic colours imitate clouds and grey-blue seascapes. Exposure to the elements and the changeable weather drives us to crave a rich interior palette of agate blue, granite and polished slate.

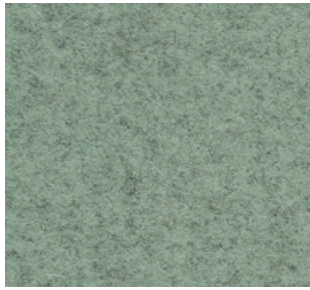


Deep Time

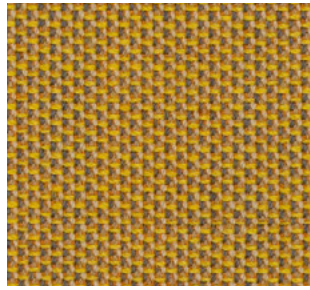




Yoredale
Horton | UDA30



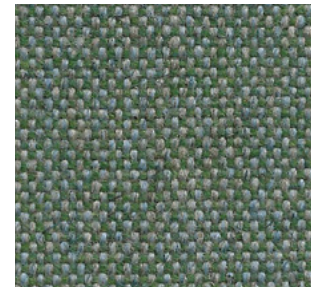
Blazer
Moray | CUZ4K



Penta
Glow | PEN19



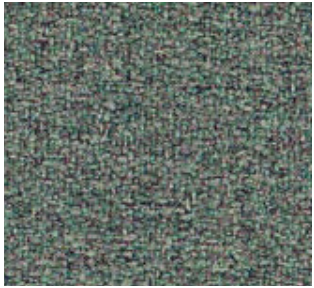
Revolution
Evolve | REV10



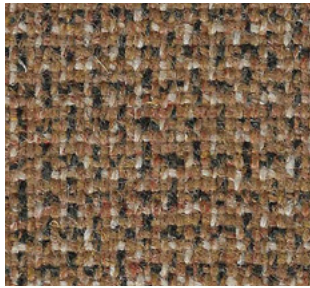
Main Line Flax
Bethnal | MLF25



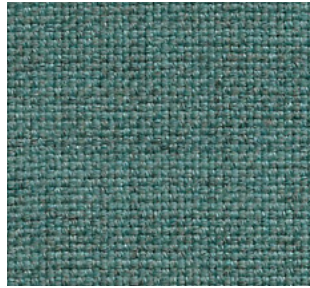
Main Line Twist
Creel | MLT09



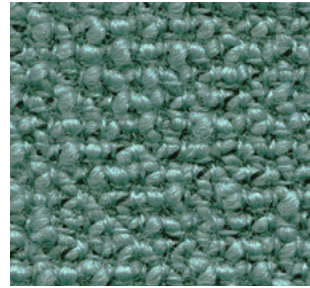
X2
Binary | AK043



Main Line Twist
Ply | MLT10



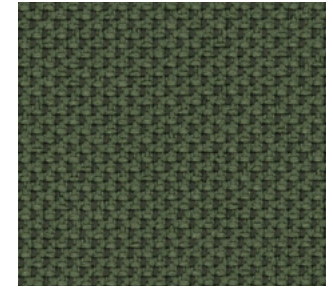
Sumi
Handa | SUR10



Yoredale
Cracoe | UDA23



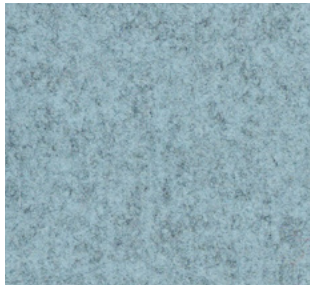
Main Line Flax
Perivale | MLF59



RePlay
Freestyle | REP11



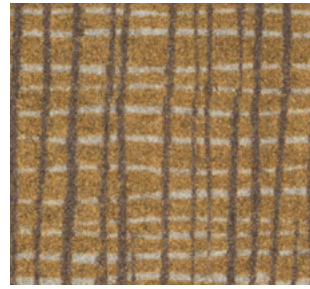
Revolution
Reform | REV06



Blazer
Plymouth | CUZ1R



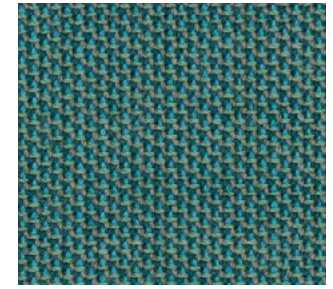
Yoredale
Bronte | UDA28



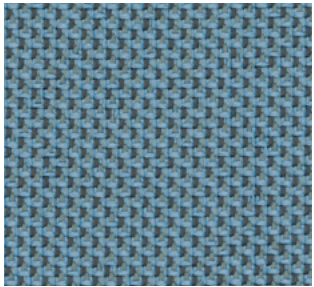
Patternmaker
Crosshatch | PMC12



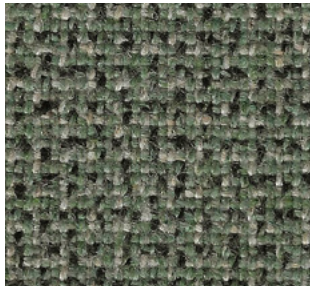
Blazer
Bristol | CUZ4X



Penta
Gamut | PEN01



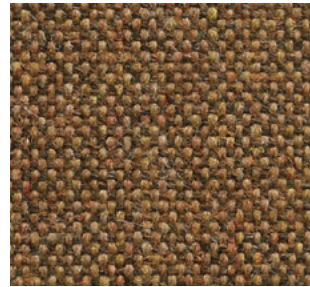
RePlay
Flex | REP01



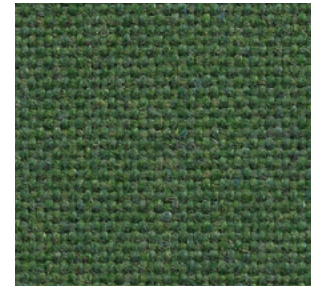
Main Line Twist
Blend | MLT11



Blazer
Stowe | CUZ3R



Main Line Flax
Stockwell | MLF15



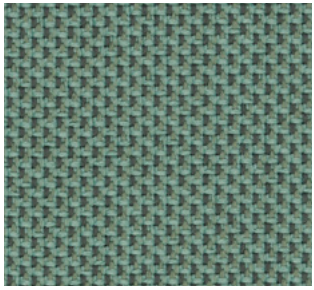
Main Line Flax
Farringdon | MLF29



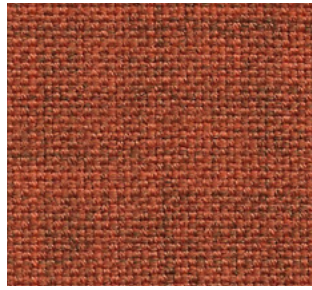
Blazer
Caterham | CUZ4A

Reclamation

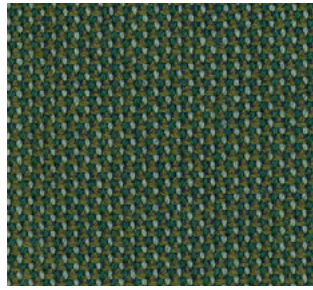




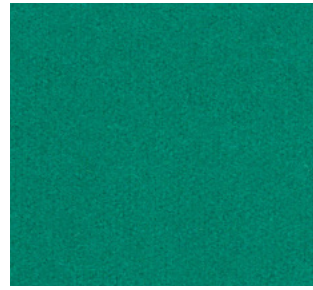
RePlay
Joy | REP07



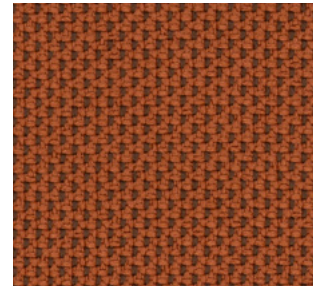
Sumi
Tono | SUR23



Penta
Goethe | PEN11



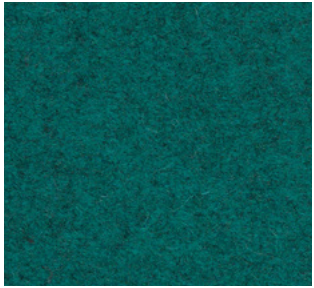
Blazer
Montcrest | CUZ3A



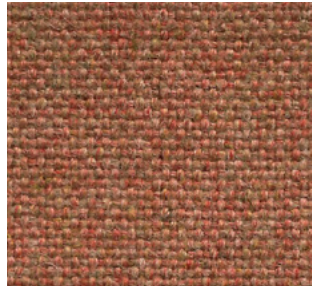
RePlay
Roll | REP18



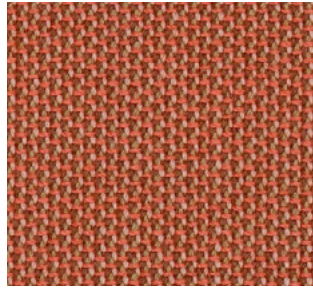
X2
Factor | AK044



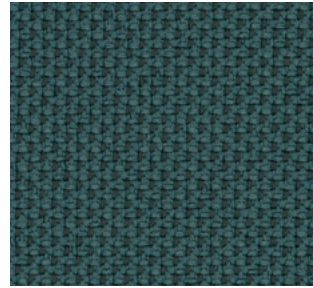
Blazer
Bodmin | CUZ4F



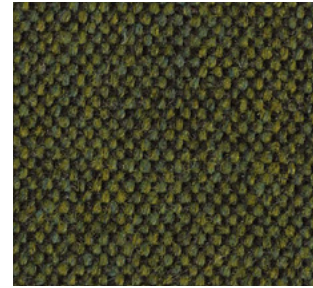
Main Line Flax
Alperton | MLF43



Penta
Paint | PEN30



RePlay
Cheer | REP08



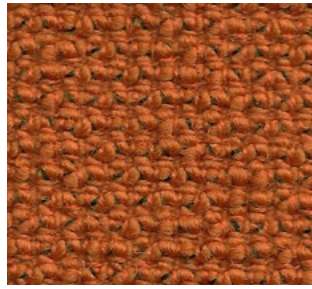
Main Line Flax
Kentish | MLF56



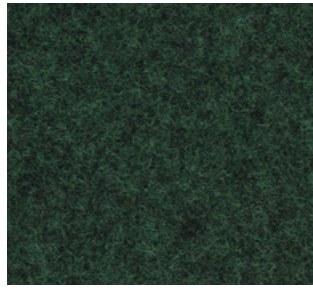
Blazer
Warwick | CUZ4L



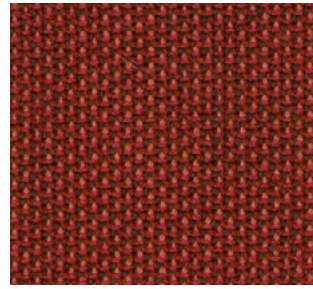
Main Line Flax
Barking | MLF45



Yoredale
Ilkley | UDA31



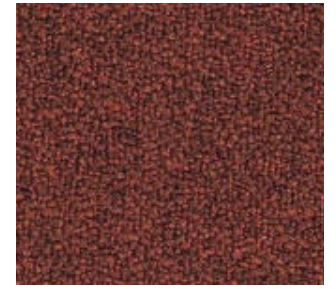
Blazer
Grantham | CUZ4E



Penta
Pigment | PEN31



Blazer
Tonbridge | CUZ3Q



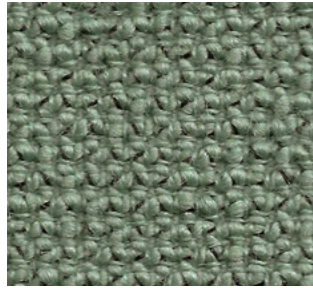
X2
Total | AK040



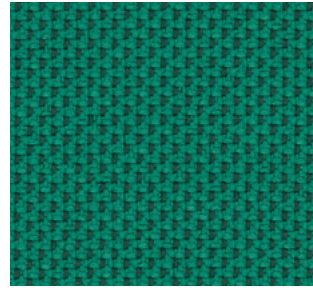
Yoredale
Woodale | UDA12



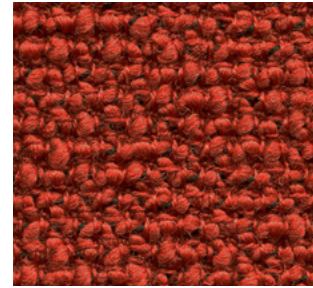
X2
Sum | AK039



Yoredale
Grassington | UDA27



RePlay
Step | REP10



Yoredale
Walden | UDA13



Yoredale
Ingleton | UDA32

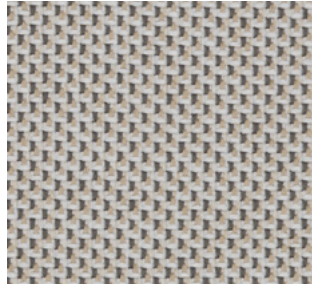


Humble





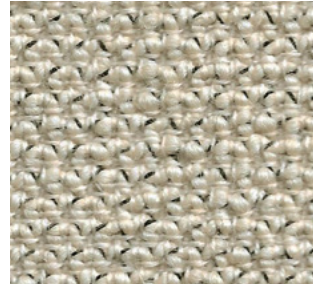
Revolution
Bloom | REV09



RePlay
Skip | REP13



Sumi
Miki | SUR11



Yoredale
Gordale | UDA29



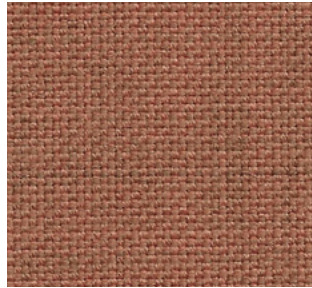
Main Line Flax
Stratford | MLF64



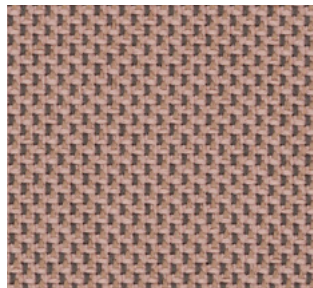
Blazer
Earlscliffe | CUZ3T



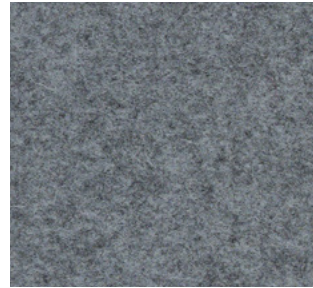
Main Line Flax
Redbridge | MLF61



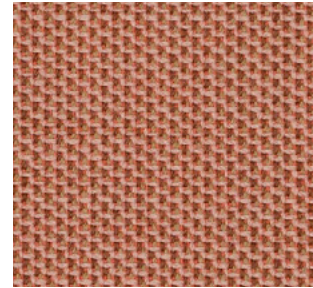
Sumi
Mito | SUR21



RePlay
Pull | REP15



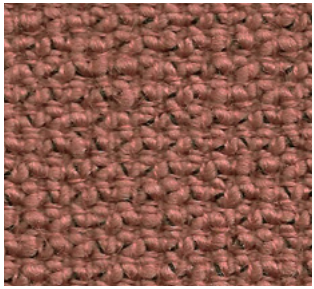
Blazer
Aberlour | CUZ1J



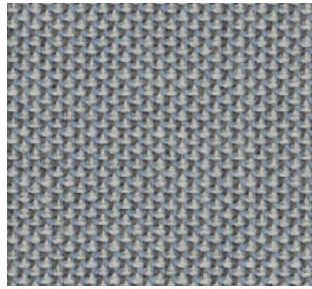
Penta
Marble | PEN29



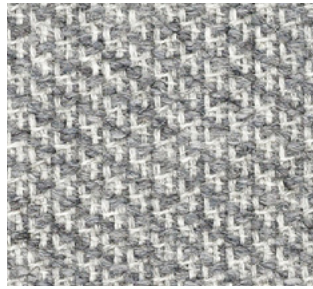
Revolution
Realise | REV03



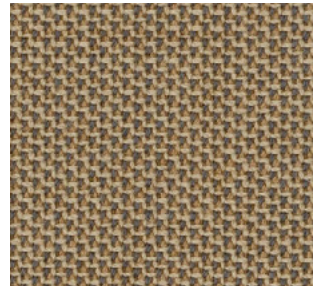
Yoredale
Kettlewell | UDA33



Penta
Purity | PEN23



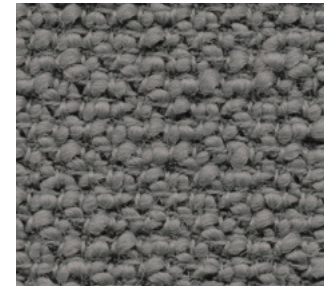
Revolution
Invent | REV02



Penta
Render | PEN17



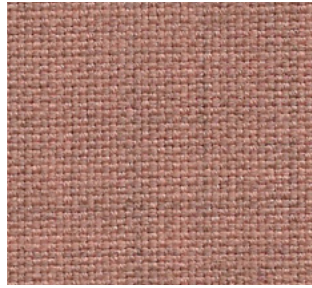
Blazer
Dartmouth | CUZ2Q



Yoredale
Hardraw | UDA04



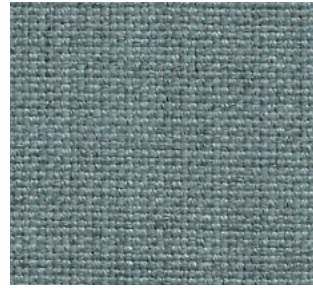
X2
Theory | AK050



Sumi
Narita | SUR13



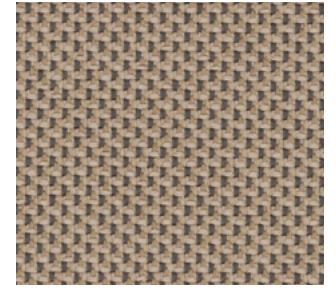
Yoredale
Carperby | UDA07



Sumi
Tamba | SUR19

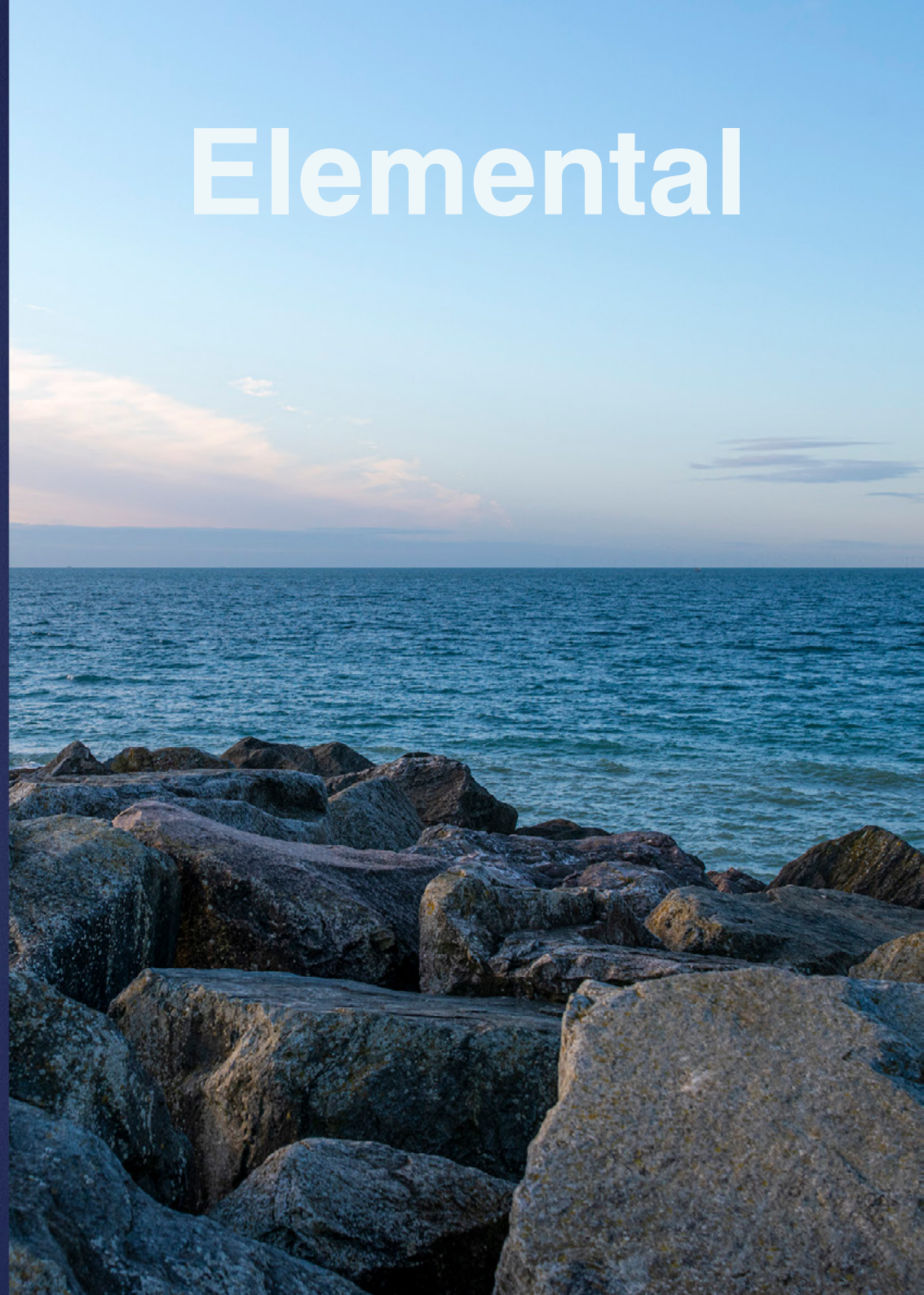


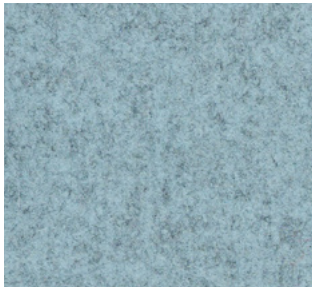
Main Line Flax
Pinner | MLF60



RePlay
Hop | REP14

Elemental

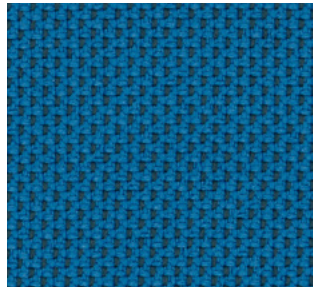




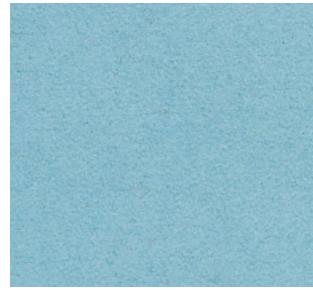
Blazer
Plymouth | CUZ1R



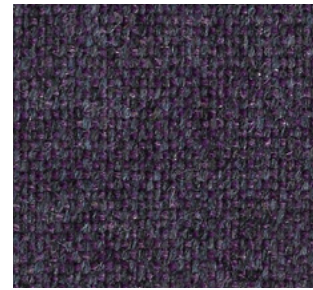
Sumi
Uto | SUR25



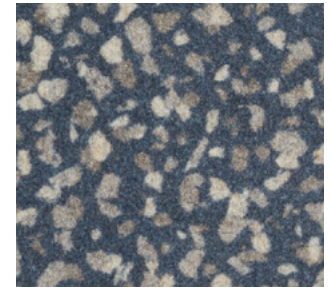
RePlay
Run | REP04



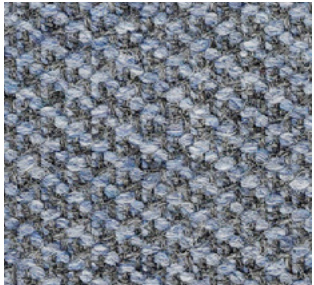
Blazer
Woodcroft | CUZ2Z



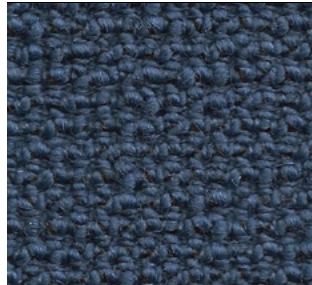
Main Line Flax
Chigwell | MLF48



Patternmaker
Speckle | PMS09



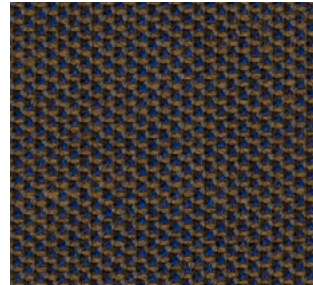
Revolution
Nurture | REV08



Yoredale
Malham | UDA34



Main Line Flax
Epping | MLF51



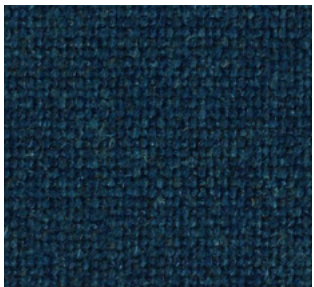
Penta
Harlequin | PEN05



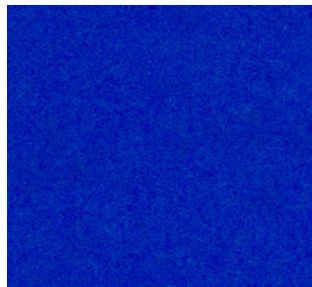
Yoredale
Settle | UDA36



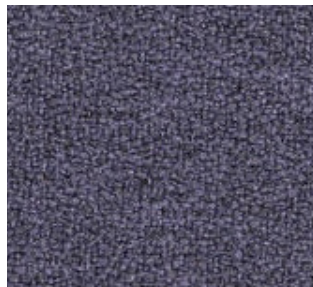
RePlay
Throw | REP31



Main Line Flax
Embankment | MLF50



Blazer
Dundee | CUZ4P



X2
Apply | AK042



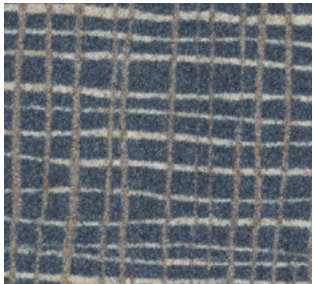
Yoredale
Dacre | UDA21



X2
Cube | AK045



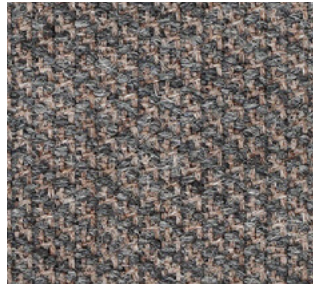
Blazer
Manchester | CUZ1V



Patternmaker
Crosshatch | PMC09



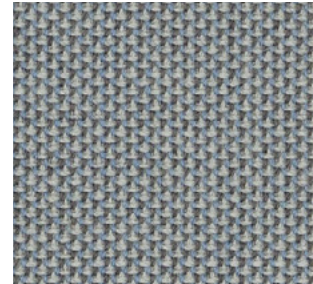
X2
Maths | AK007



Revolution
Explore | REV04



Blazer
Trevelyan | CUZ31



Penta
Purity | PEN23



Blazer
Vassar | CUZ2U

camira
camirafabrics.com