

Patternmaker

Using state-of-the-art digital printing technology and created in collaboration with renowned textile designer, Kate Lawrie, Patternmaker's four contemporary designs, Crosshatch, Dot Dash, Hula and Speckle, are brought to life on our 100% pure new wool felted fabric. Blending sustainability with style, Patternmaker injects pattern and personality into hospitality, commercial and residential interiors.

camira



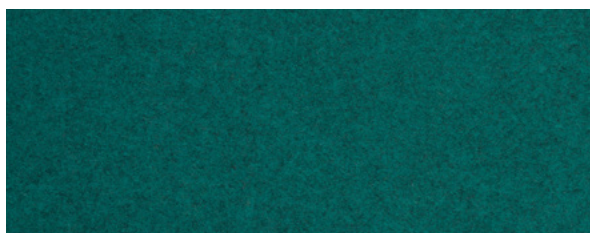
**Renewable
Pure New Wool**



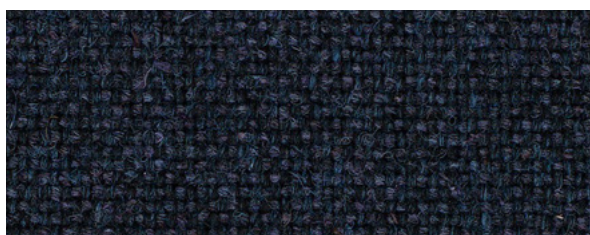
Dot Dash
PMD12



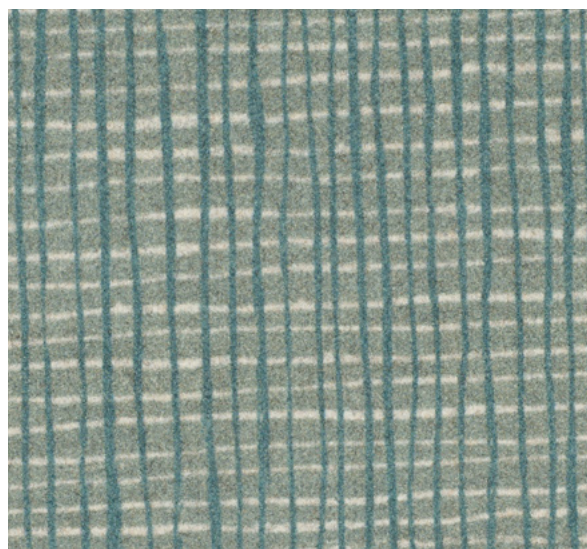
Crosshatch
PMC14



Blazer
Bodmin, CUZ4F



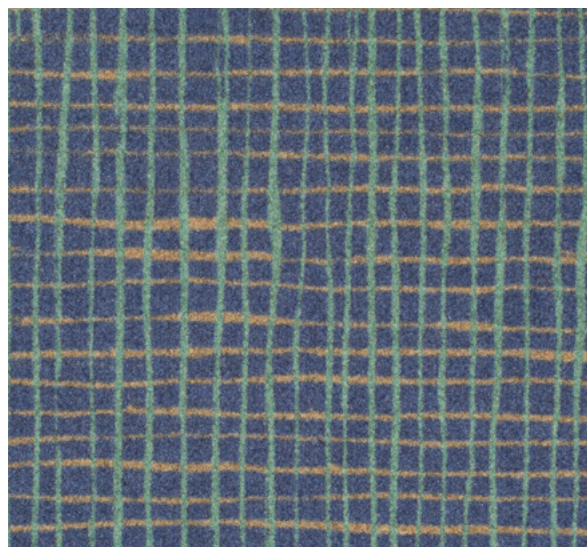
Main Line Flax
Tower, MLF36



Crosshatch
PMC15



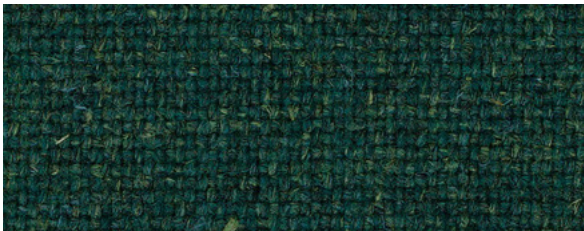
Dot Dash
PMD13



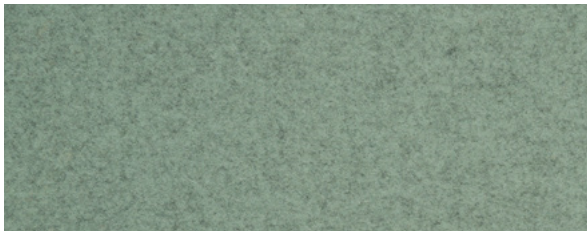
Crosshatch
PMC13



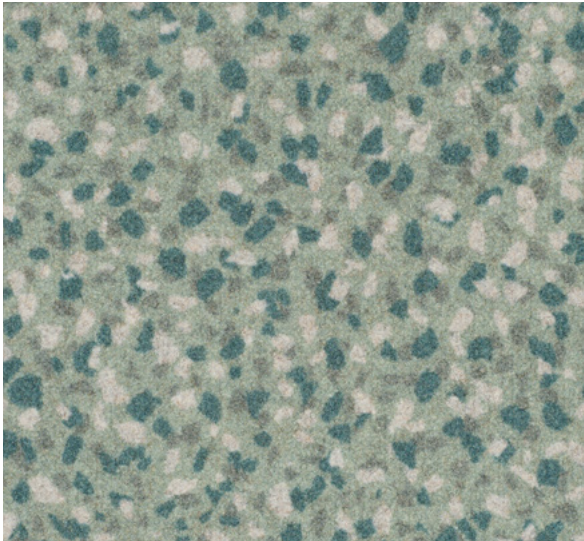
Hula
PMH07



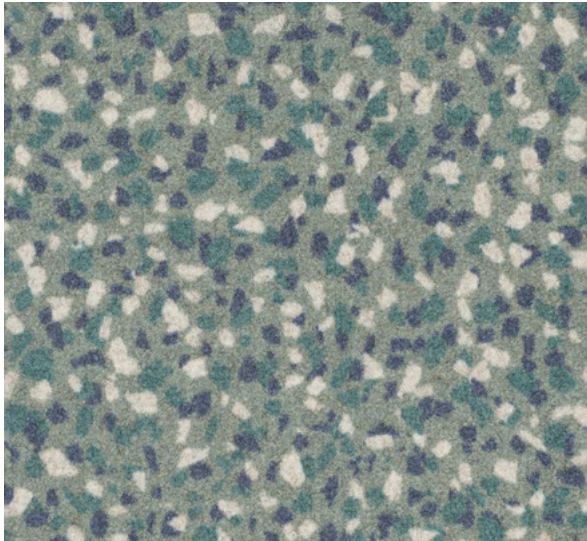
Main Line Flax
Hornchurch, MLF55



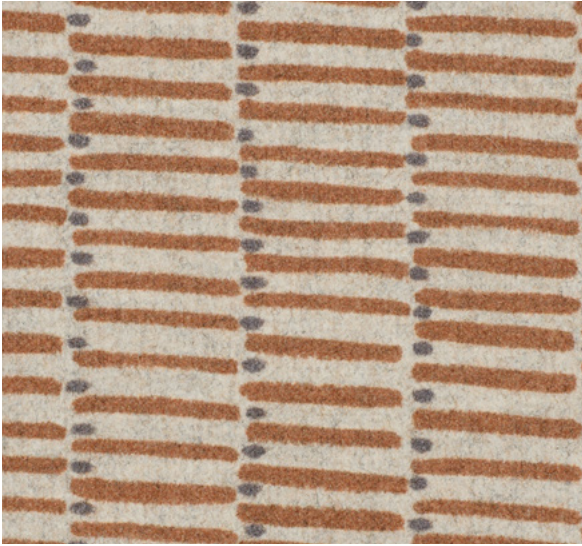
Blazer
Moray, CUZ4K



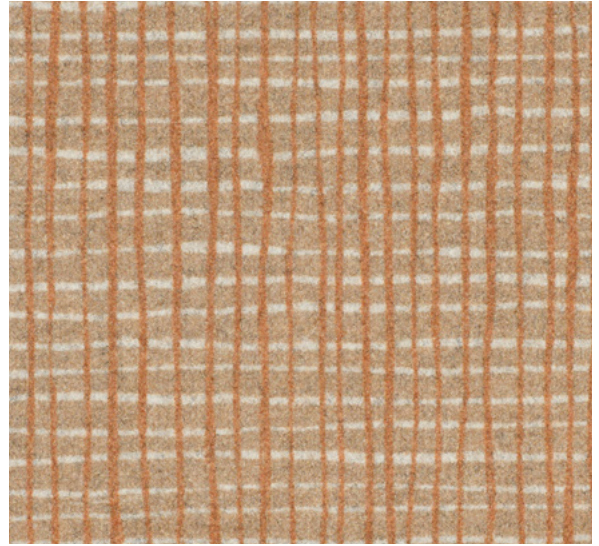
Speckle
PMS12



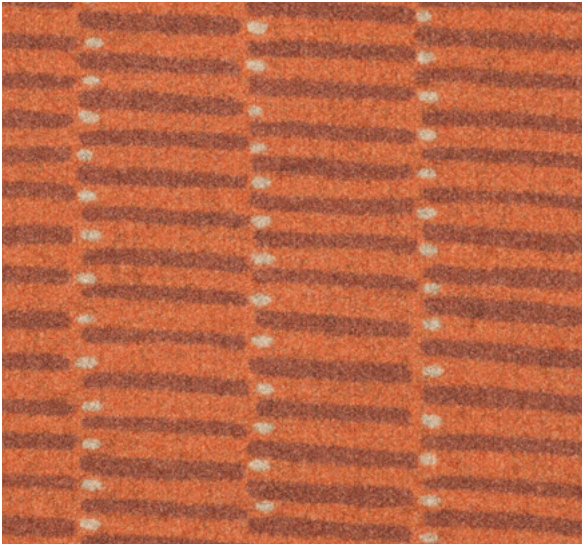
Speckle
PMS13



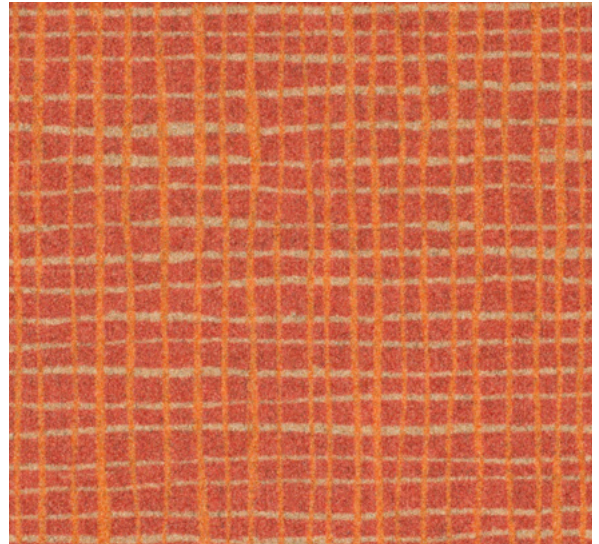
Dot Dash
PMD15



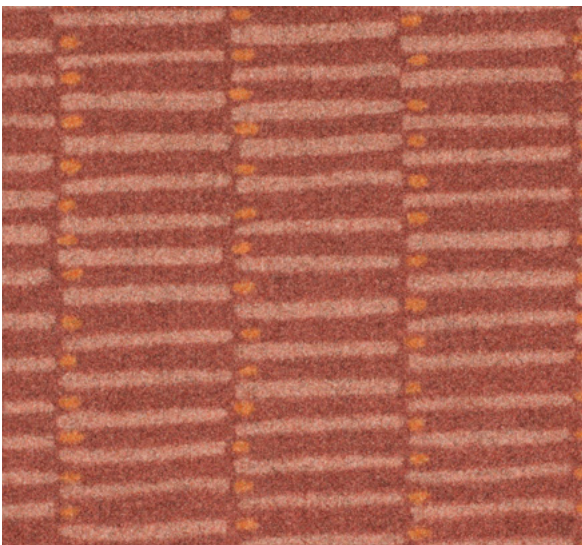
Crosshatch
PMC18



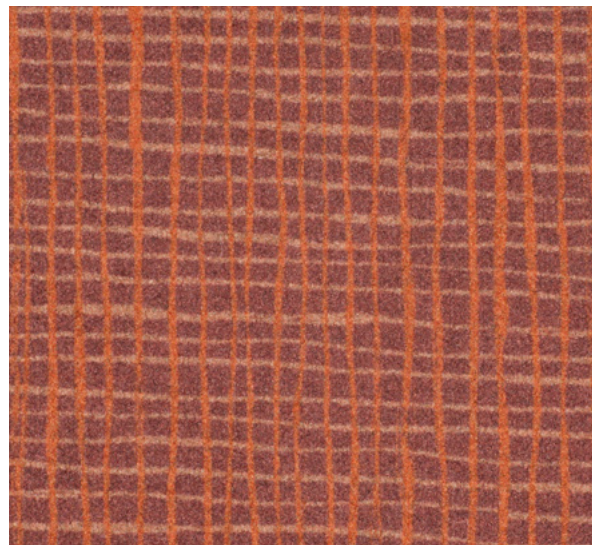
Dot Dash
PMD16



Crosshatch
PMC17



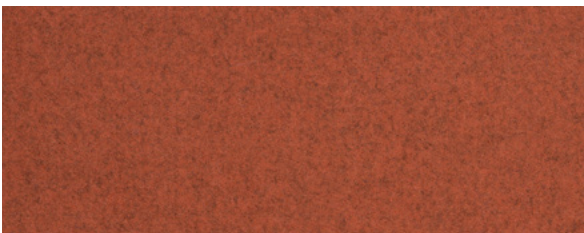
Dot Dash
PMD14



Crosshatch
PMC16



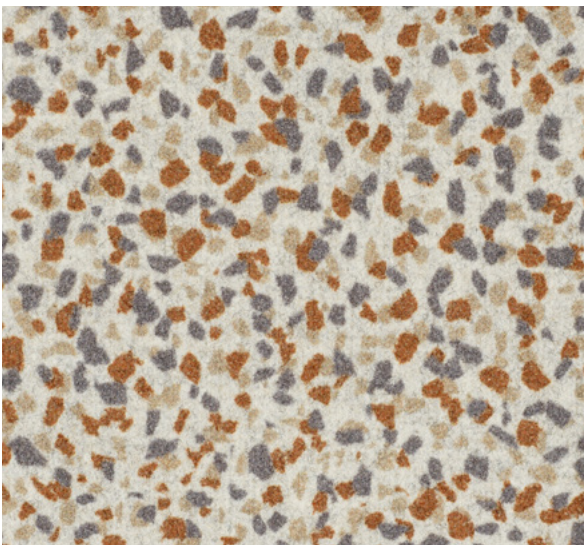
Hula
PMH08



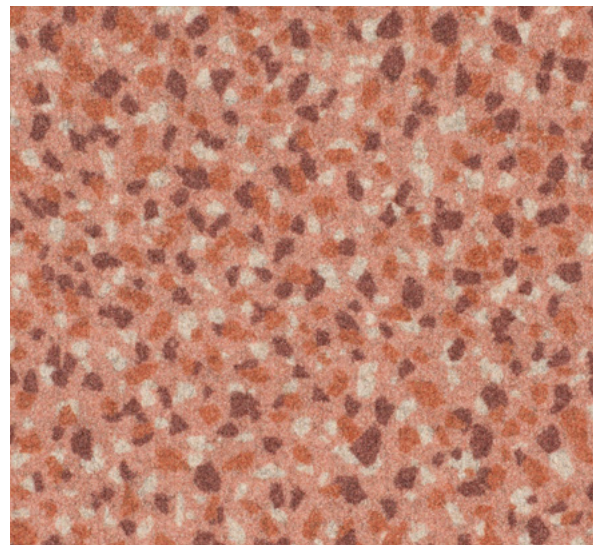
Blazer
Warwick, CUZ4L



Main Line Flax
Morden, MLF12



Speckle
PMS14



Speckle
PMS15



Dot Dash
PMD10



Crosshatch
PMC12



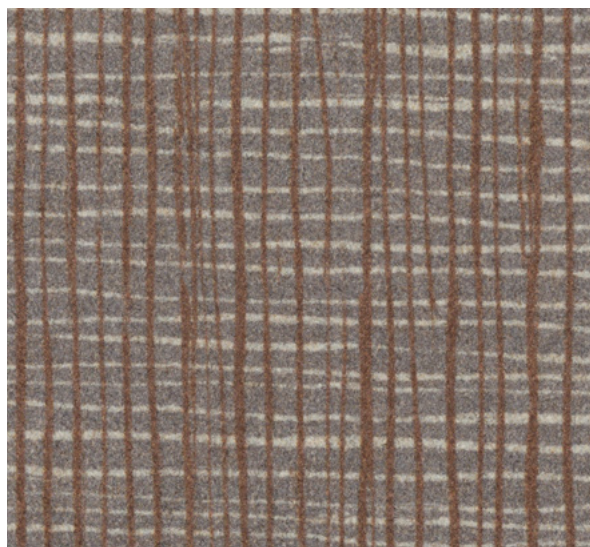
Blazer
Surrey, CUZ1E



Crosshatch
PMC11



Main Line Flax
Bank, MLF23



Crosshatch
PMC10



Dot Dash
PMD11



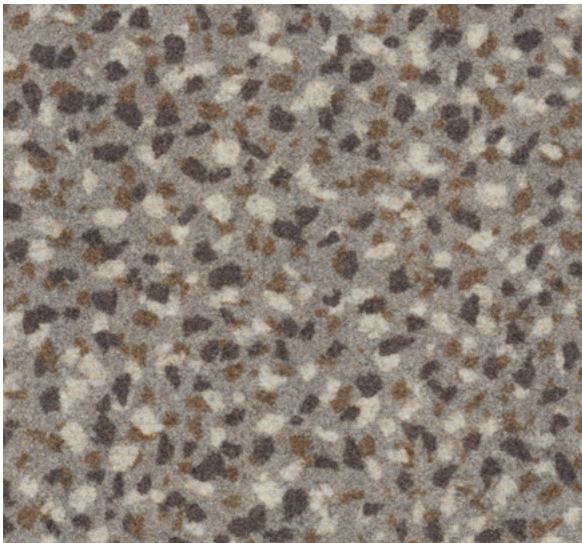
Hula
PMH05



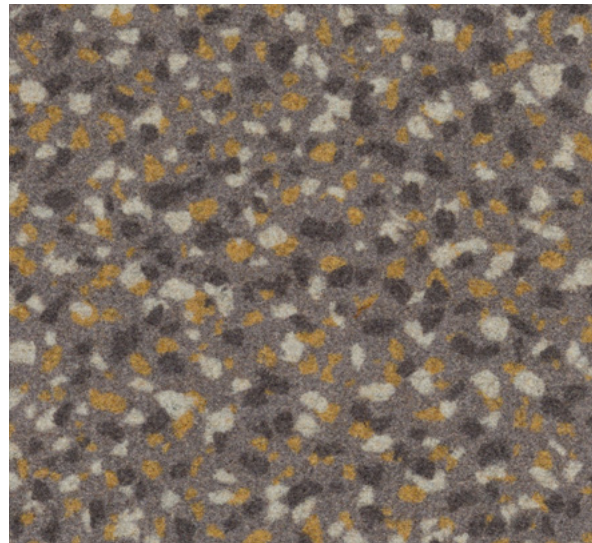
Blazer
Trevelyan, CUZ31



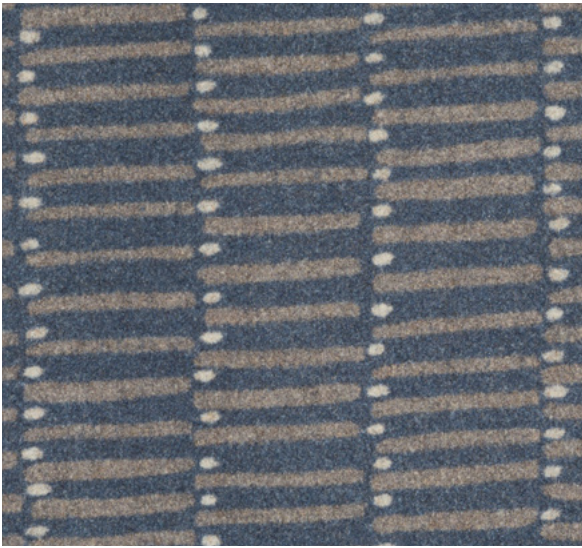
Main Line Flax
Morden, MLF12



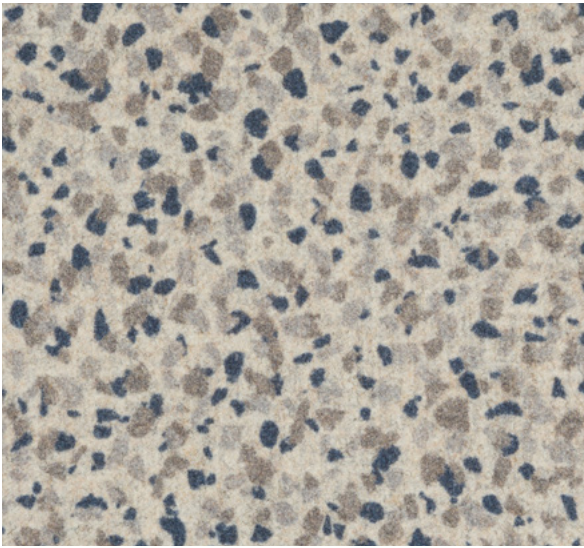
Speckle
PMS11



Speckle
PMS10



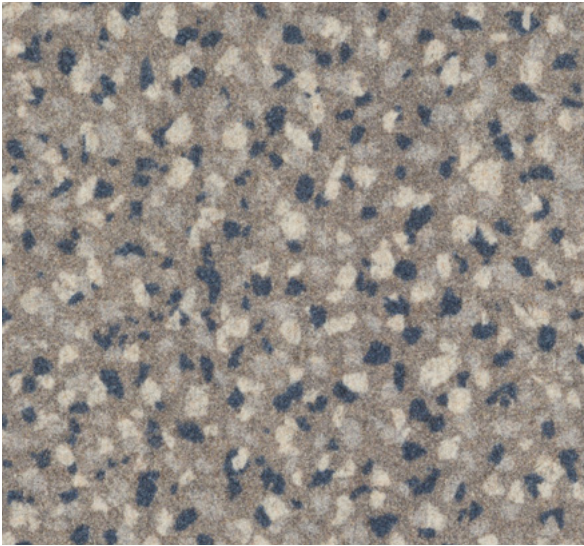
Dot Dash
PMD07



Speckle
PMS07



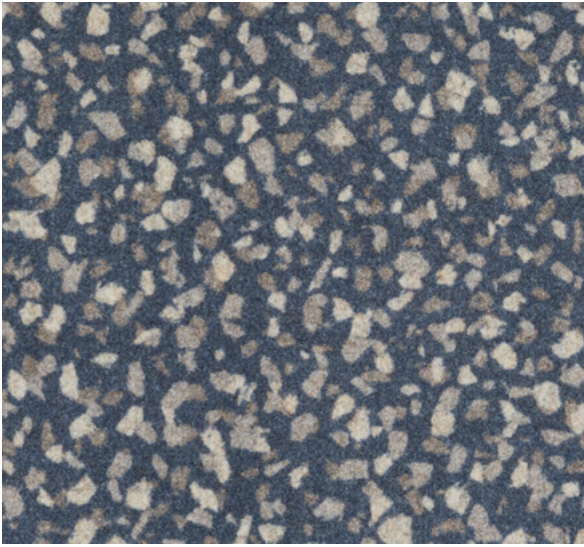
Dot Dash
PMD09



Speckle
PMS08



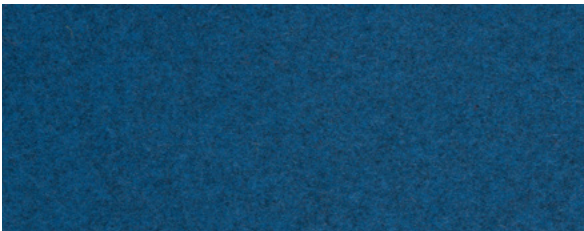
Dot Dash
PMD08



Speckle
PMS09



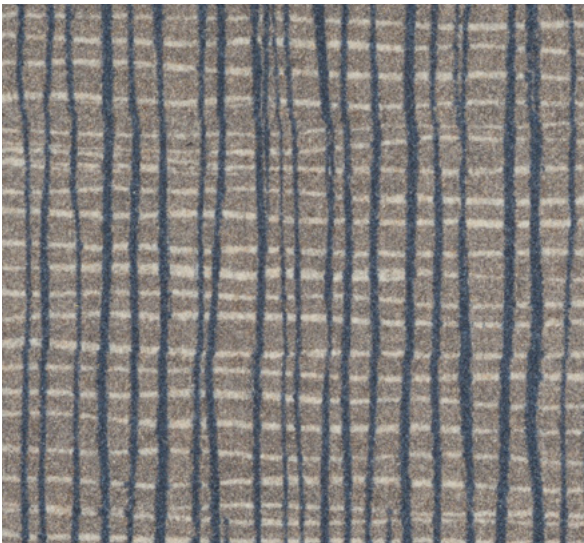
Hula
PMH04



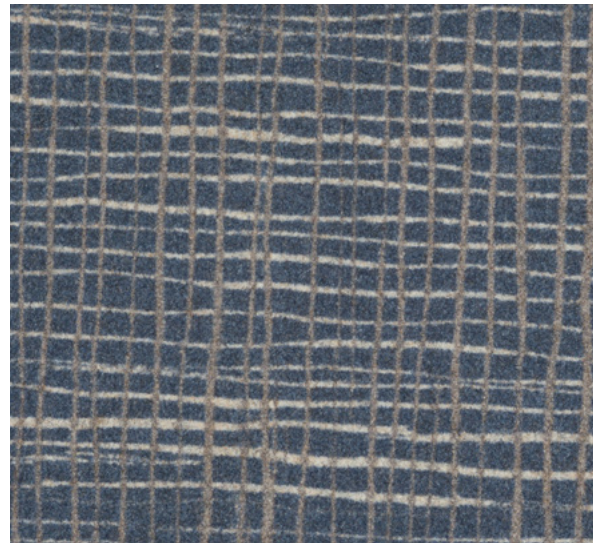
Blazer
Newcastle, CUZ1W



Main Line Flax
Redbridge, MLF61



Crosshatch
PMC08



Crosshatch
PMC09

Patternmaker - Product information



Task seating



Lounge seating



Panels



IMO FTP Code
(Part 8)



Acoustic



Year guarantee

With Treatment



Drapery



Patternmaker meets the ACT voluntary Performance Guidelines and is classified for Heavy Duty Upholstery.

Technical information - Q217

EN

Composition

100% Pure New Wool

Environmental

Certified to the EU Ecolabel
Certified to Indoor Advantage™ Gold

Width

54 inches minimum

Weight

13^{1/2} oz/sq yd ±5% (20^{1/4} oz/running yd ±5%)

Pattern Repeat

PMC: Width: 54 inches, Length: 53 inches ±5%
PMD: Width: 54 inches, Length: 17 inches ±5%
PMH: Width: 54 inches, Length: 25 inches ±5%
PMS: Width: 54 inches, Length: 31 inches ±5%

Abrasion Resistance*

D4966 Martindale method, Heavy Duty Upholstery
Independently certified to ≥45,000 cycles
Covered by a full and comprehensive 5 year guarantee
(full details available)

Flammability

California Technical Bulletin 117
NFFPA 260 + UFAC Class 1
BS 7176 Low Hazard
ASTM E84 Class 1 or A (Adhered)
ASTM E84 Class 2 or B (Un-adhered)
IMO FTP Code (Part 8)

With FR Treatment (Gorts):

ASTM E84 Class 1 or A (Un-adhered)
NFFPA 701
IMO FTP Code (Part 7)

Note: Flammability performance is dependent on components used. Our certificates show what substrates have been used in our tests. For composite tests customers must ensure their complete furniture meets the necessary standards.

Color Fastness to Light

AATCC-16 (40 hours) Class 4

Color Fastness to Crocking

AATCC-8 (Dry: 4, Wet: 3)

Acoustic Properties

Acoustically transparent, acoustic graphs available upon request.

Cleaning

W/S

Clean with a water-based cleaning agent or solvent: Depending on the stain, you can use a dry-cleaning solvent, the foam of a mild detergent, or upholstery shampoo.

*Abrasion test results exceeding ACT Performance Guidelines are not an indicator of product lifespan. Multiple factors affect fabric durability and appearance retention. We're confident in the durability of our products so we provide a robust 5 year guarantee (full details available). This product is externally certified, details of which are on our website and available from our customer services team. Batch to batch variations in shade may occur within commercial tenancies. We reserve the right to alter technical specifications without notice. The Unregistered Design Rights and the Copyright in all designs are the exclusive property of Camira Fabrics Limited.

F

Composition

100% Laine Vierge

Écologique

Avec le certificat EU Ecolabel
Certifié à Indoor Advantage™ Gold

Largeur

54 pouces minimum

Poids

13^{1/2} oz/sq yd ±5% (20^{1/4} oz/rd.lin ±5%)

Répétition du motif

PMC: Largeur: 54 inches, Longueur: 53 pouces ±5%
PMD: Largeur: 54 inches, Longueur: 17 pouces ±5%
PMH: Largeur: 54 inches, Longueur: 25 pouces ±5%
PMS: Largeur: 54 inches, Longueur: 31 pouces ±5%

Résistance à l'abrasion*

D4966 Martindale method, Heavy Duty Upholstery
Certificat indépendant ≥45,000 cycles
Avec une garantie totale de durabilité de 5 ans
(renseignements complémentaires disponibles)

Flammabilité

California Technical Bulletin 117
NFFPA 260 + UFAC Class 1
BS 7176 Low Hazard
ASTM E84 Class 1 or A (Adhered)
ASTM E84 Class 2 or B (Un-adhered)
IMO FTP Code (Part 8)

Mit FR (Gorts) ausgerüstet:

ASTM E84 Class 1 or A (Un-adhered)
NFFPA 701
IMO FTP Code (Part 7)

Notez: La performance de flammabilité dépend des composantes utilisées. Nos certificats indiquent les substrats utilisés dans nos tests. Pour les tests composites, les clients doivent s'assurer que leurs meubles complets satisfont aux normes nécessaires.

Solidité à la Lumière

AATCC-16 (40 heures) Class 4

Solidité à la Crocking

AATCC-8 (Sec: 4, Mouillé: 3)

Propriétés Acoustiques

Acoustiquement transparent, graphiques acoustiques disponibles sur demande.

Nettoyage

W/S

Nettoyer avec un produit d'entretien à base d'eau: en fonction de la tâche, vous pouvez nettoyer à sec, à l'aide d'un détergent ou bien avec du shampoing pour meubles.

*Les résultats des tests d'abrasion dépassant les directives de performance ACT ne sont pas un indicateur de la durée de vie du produit. De multiples facteurs affectent la durabilité du tissu et la conservation de son apparence. Nous sommes confiants dans la durabilité de nos produits, nous offrons donc une solide garantie de 5 ans (tous les détails sont disponibles). Ce produit est certifié en externe, dont les détails sont sur notre site Web et disponible auprès de notre équipe de service à la clientèle. Des variations de teinte d'un lot à l'autre peuvent se produire dans les tolérances commerciales. Nous nous réservons le droit de modifier les spécifications techniques sans préavis. Les droits de conception non enregistrés et le droit d'auteur sur toutes les conceptions sont la propriété exclusive de Camira Fabrics Limited.

ES

Composición

100% Lana Virgen

Ambiental

Certificado con EU Ecolabel
Certificado de Indoor Advantage™ Gold

Ancho

54 pulgadas mínimo

Peso

13^{1/2} oz/sq yd ±5% (20^{1/4} oz/lin.y ±5%)

Repetición en el diseño

PMC: Ancho: 54 inches, Largo: 53 pulgadas ±5%
PMD: Ancho: 54 inches, Largo: 17 pulgadas ±5%
PMH: Ancho: 54 inches, Largo: 25 pulgadas ±5%
PMS: Ancho: 54 inches, Largo: 31 pulgadas ±5%

Resistencia a la abrasión*

D4966 Martindale method, Heavy Duty Upholstery
independientemente del certificado de ≥45,000 ciclos
Con garantía de uso 5 años
(más información disponible bajo consulta)

Inflamabilidad

California Technical Bulletin 117
NFFPA 260 + UFAC Class 1
BS 7176 Low Hazard
ASTM E84 Class 1 or A (Adhered)
ASTM E84 Class 2 or B (Un-adhered)
IMO FTP Code (Part 8)

Avec traitement FR (Gorts):

ASTM E84 Class 1 or A (Un-adhered)
NFFPA 701
IMO FTP Code (Part 7)

Nota: El rendimiento de la inflamabilidad depende de los componentes usados. Nuestros certificados muestran qué substratos se han usado en nuestros tests. Para tests compuestos nuestros clientes deben asegurar si sus muebles cumplen la normativa al uso.

Solidez a la Luz

AATCC-16 (40 horas) Class 4

Solidez al Rozamiento

AATCC-8 (Seco: 4, Húmedo: 3)

Acústico Propiedades

Acústicamente transparente, gráficos disponibles bajo petición.

Limpieza

W/S

Lavar con un producto de limpieza neutro o solvente: en función de la suciedad o mancha, se puede limpiar con un producto de limpieza en seco, espuma templada o producto de limpieza de sofás.

*Los resultados de las pruebas de abrasión que exceden las pautas de rendimiento ACT no son un indicador de la vida útil del producto. Múltiples factores afectan la durabilidad y aspecto del tejido. Confiamos en la durabilidad de nuestros productos, por lo que ofrecemos una sólida garantía de 5 años (detalles completos disponibles). Este producto se certifica externamente, todos los detalles están disponibles en nuestra web y el departamento de atención al cliente se los puede facilitar. Pequeñas variaciones de color entre diferentes tintados son posibles dentro de las tolerancias comerciales. Nos reservamos el derecho a modificar las especificaciones técnicas sin previo aviso. Los derechos de diseño no registrados y el copyright de todos nuestros diseños son propiedad exclusiva de Camira Fabrics Limited.



Renewable
Pure New Wool

