

camira

H O M E



HOME TEXTILE COLLECTION



WELCOME

04 INTRODUCTION: TAKE A SEAT

COLOUR INSPIRATION

06 NATURAL MINIMALISM

08 DREAMING OF DUSK

10 BLUE NOTES

12 BACK TO NATURE

14 HOME IMPROVEMENTS -
STAND OUT FEATURES

FABRIC SELECTION

17 ADVANTAGE HOME

18 AQUARIUS

20 BLAZER

22 CRAGGAN

24 DECA

27 KYOTO

29 MAIN LINE FLAX &
MAIN LINE FLAX STRIPE

31 MAIN LINE PLUS

32 PATINA

34 PHOENIX

36 SILK

38 SUMI

41 SYNERGY

42 YOREDALE

45 VITA

46 ZAP

48 QUICK SHIP FABRICS

55 HOME SECURITY – UK DOMESTIC
FLAMMABILITY REQUIREMENTS

56 HOME HELP – CLEANING
RECOMMENDATIONS

TAKE A SEAT.

NOT JUST ANY OLD SEAT, ESPECIALLY WHEN YOU'RE WORKING FROM HOME.

SO DINING CHAIRS WON'T CUT THE MUSTARD AND EASY CHAIRS ARE TOO HARD TO WORK FROM. WFH NEEDS AN ERGONOMIC TASK CHAIR - LIKE IN A CONVENTIONAL OFFICE - WHICH GIVES THE NECESSARY COMFORT AND SUPPORT.

JUST AS YOU WOULDN'T USE ANY OLD CHAIR, SO YOU SHOULDN'T USE ANY OLD FABRIC. LOTS OF DOMESTIC FABRICS ONLY ACHIEVE LOW ABRASION SO SIMPLY WON'T STAND UP TO ENDLESS SITTING DOWN.

AND A LOT OF COMMERCIAL CONTRACT FABRICS HAVEN'T BEEN TESTED TO THE COMPLEX UK DOMESTIC FLAMMABILITY REGULATIONS, OR JUST WON'T PASS THE TEST, SO THERE IS A RISK THAT YOU COULD BE BREAKING THE LAW.

IF YOU'RE A FURNITURE MANUFACTURER, THE RESPONSIBILITY IS ON YOU, RIGHT DOWN TO SPECIFIC LABELLING REQUIREMENTS.

HERE WE SHOWCASE A SELECTION OF OUR FABRICS WHICH FIT THE BILL FOR HOME OFFICE INTERIORS, BLENDING PERFECTLY WITH RESIDENTIAL DÉCOR, AND MEETING THE RELEVANT UK FLAMMABILITY REQUIREMENTS.



*natural
minimalism*



MorningWorks



Zerolighting



LEFT TO RIGHT: LDS05, ZAN08, SUR06, UDA07, JA409, CUZ2Q, SUR04



*dreaming
of dusk*

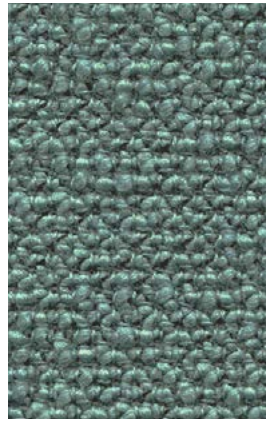
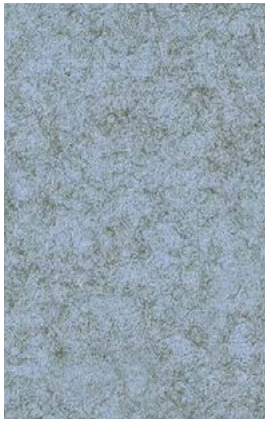




LEFT TO RIGHT: PAT42, SLK03, LDS07, JA416, PAT01, UDA22



*blue
notes*



LEFT TO RIGHT: CUZ1R, FST07, UDA22, JA024, PAT01, MLF21, MLF20

back to nature



EMKO





LEFT TO RIGHT: ZAP01, CUZ86, MLF26, UDA25, PAT06, SLK08, ZAP02, UDA05

HOME IMPROVEMENTS - FABRICS TO MAKE YOUR HOME A BETTER PLACE TO LIVE AND WORK

OUR FABRICS NOT ONLY HELP MAKE A HOUSE A HOME, THEY MAKE IT A BETTER PLACE TO LIVE AND WORK IN. THEY BRING COLOUR, DESIGN AND TEXTURE TO THE ROOMS THEY FURNISH, REVEALING THEIR INDIVIDUAL PERSONALITIES TO BECOME A REAL PART OF THE FAMILY. THEY EXPRESS THEMSELVES IN DIFFERENT WAYS WHETHER ON COMPUTER CHAIRS, SOFAS AND LOUNGE CHAIRS, SCATTER CUSHIONS OR FOOTSTOOLS. AND THEY FIT WITH ECO-CONSCIOUS CONSUMERS AND A HEALTHY LIFESTYLE THANKS TO OUR BIAS TOWARDS NATURAL MATERIALS CENTRED ON WOOL AND PLANT BASED NATURAL FIBRES.

WOOL

THERE ARE SO MANY WONDERFUL THINGS ABOUT MOTHER NATURE'S SMART FIBRE, NOT ONLY ITS AESTHETIC AND SUSTAINABILITY PROPERTIES, BUT ALSO ITS ABILITY TO LOOK GOOD FOR LONGER, ITS FIRE SAFETY AND ITS BENEFITS FOR HEALTH AND WELLBEING: WOOL ACTUALLY IMPROVES INDOOR AIR QUALITY THROUGH ITS AIR FILTERING CAPABILITIES, PLUS IT IS ALLERGY AND ASTHMA SAFE.

WOOLLEN SPUN, FINER WORSTEDS, CLASSIC CREPE WEAVE, CHUNKY TEXTURED OR FELTED, WE GO TO THE ENDS OF THE EARTH TO SOURCE NEW ZEALAND'S FINEST LAMBSWOOL, OR STAY CLOSE TO HOME FOR THE BRITISH WOOL WE USE IN YOREDALE.

BAST FIBRES

THE ULTIMATE IN ENVIRONMENTAL TEXTILES, INTIMATELY BLENDED WITH PURE NEW WOOL TO CREATE EXCITING AND INNOVATIVE MATERIAL COMBINATIONS. WE HAVE PIONEERED A WHOLE NEW CATEGORY OF ECOLOGICAL FABRICS, USING NATURALLY OCCURRING TEXTILE FIBRES FROM PLANTS, STARTING FIRST WITH THE COMMON STINGING NETTLE, THEN EVOLVING THE SAME EXPERTISE TO USE CULTIVATED FLAX. ANNUALLY RENEWABLE, BEAUTIFULLY SOFT TEXTILE FIBRES INCORPORATED INTO MAIN LINE FLAX, PATINA AND SILK.

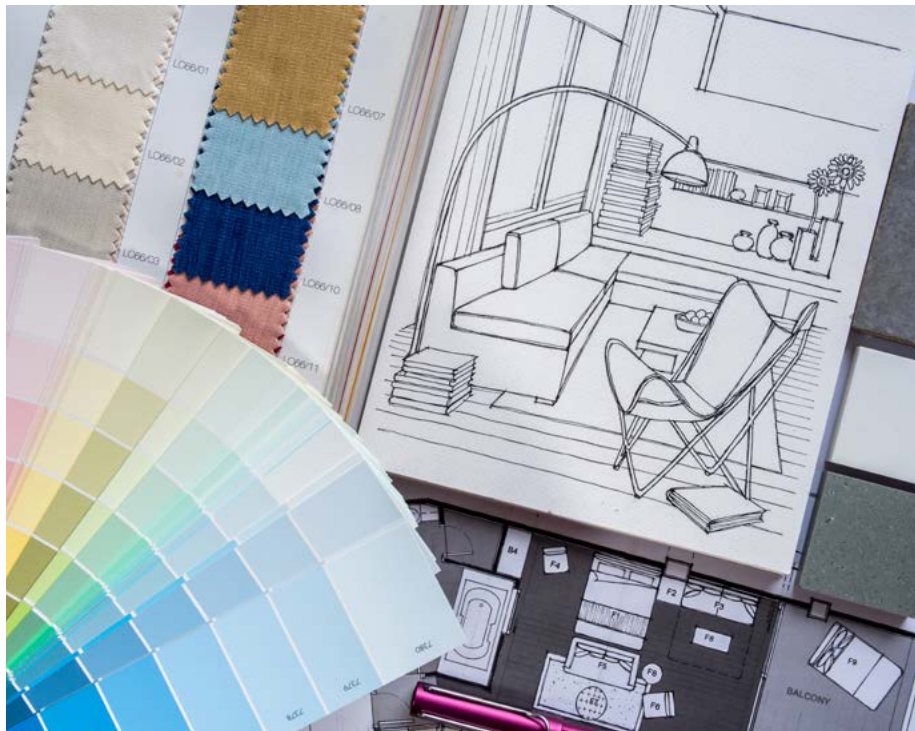
ENVIRONMENTAL ACCREDITATIONS

INDOOR ADVANTAGE GOLD

LOOK FOR THE KINGFISHER LOGO AS A MARK THAT THESE PRODUCTS SUPPORT A HEALTHY INDOOR ENVIRONMENT. THIS MEANS THEY MEET STRICT INDOOR AIR QUALITY EMISSION LIMITS FOR VOLATILE ORGANIC COMPOUNDS (VOCs) PROVIDING CLEANER ROOM AIR QUALITY FOR BETTER HEALTH AND WELLBEING.

EU ECOLABEL

A COMPREHENSIVE ENVIRONMENTAL ACCREDITATION, DEMONSTRATING A FABRIC'S ENVIRONMENTAL SENSITIVITY THROUGHOUT ITS LIFECYCLE, RIGHT FROM THE RAW MATERIALS WHICH ARE SOURCED AND USED, THROUGH THE MANUFACTURING STAGES OF PRODUCTION, AND SHOWING FITNESS FOR USE OF THE FINISHED FABRIC.





PERSIAN
HHM101



KINGFISHER
HHM122



SEA BLUE
HHM017



ADRIATIC
HHM001



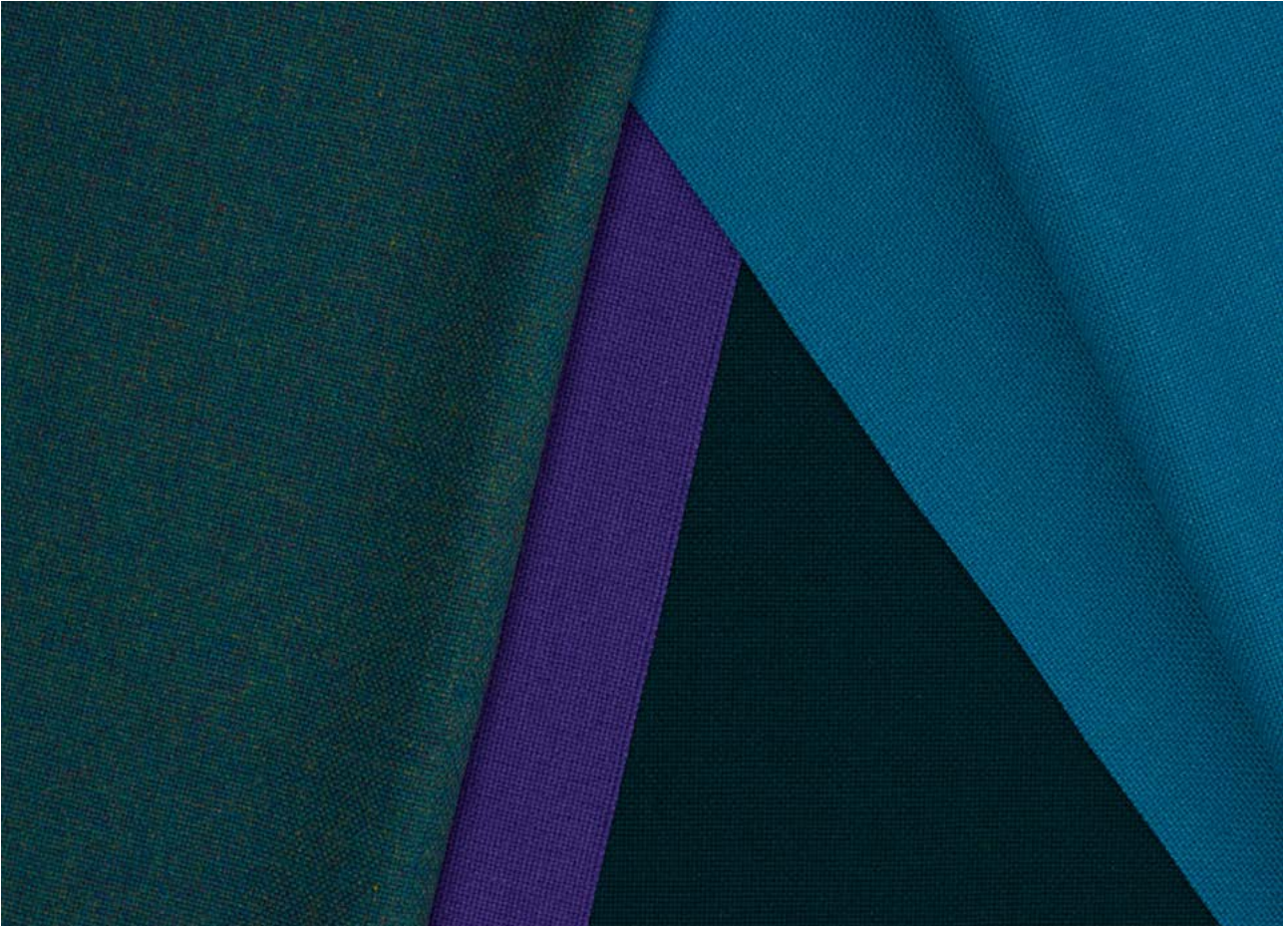
GRANITE
HHM009



PEWTER
HHM072

60% POLYPROPYLENE, 30% WOOL, 10% VISCOSE
AVAILABLE IN 28 COLOURWAYS

[VIEW ALL COLOURWAYS](#)



ADVANTAGE HOME

ADVANTAGE HOME IS A HIGHER SPECIFICATION VERSION OF OUR CLASSIC PLAIN WEAVE FABRIC ADVANTAGE DESIGNED TO MEET UK DOMESTIC FLAMMABILITY THROUGH ITS ENHANCED CONSTRUCTION. IT IS AVAILABLE TO ORDER IN ANY OF THE SAME 28 COLOURWAYS. PLEASE CONTACT US FOR INFORMATION ON MINIMUM ORDER QUANTITIES AND LEADTIMES.

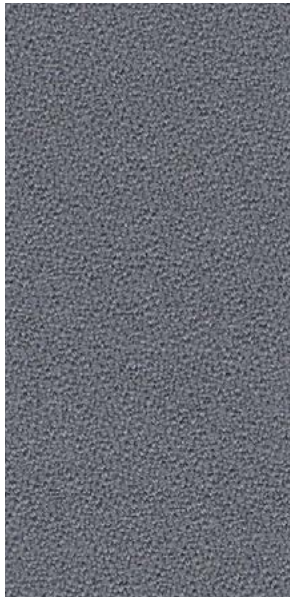
AQUARIUS

AQUARIUS IS A STAR SIGN AMONG CREPE WEAVE FABRICS - TRIED AND TESTED, VERSATILE AND SUITABLE FOR A WIDE RANGE OF FURNITURE TYPES FROM COMPUTER TASK CHAIRS TO SOFAS AND SOFT SEATING. IT'S MADE FROM 100% NATURAL WOOL, WHICH IS NOT ONLY RAPIDLY RENEWABLE BUT ALSO FULLY BIODEGRADABLE. THE COLOUR PALETTE OFFERS A GREAT BALANCE OF SUBDUED ORGANIC SHADES AND CONFIDENT BRIGHTS.

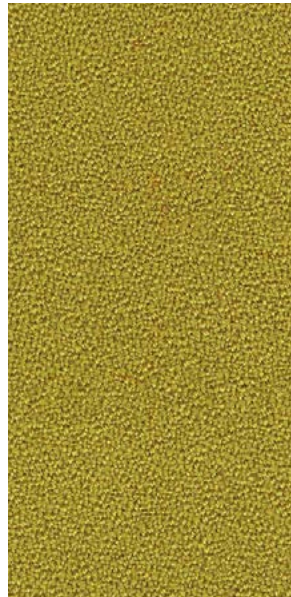




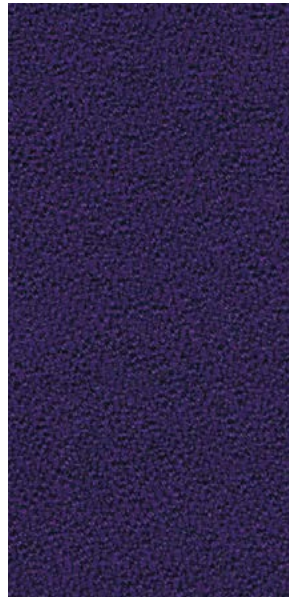
100% VIRGIN WOOL
AVAILABLE IN 27 COLOURWAYS



RHINO
JA022



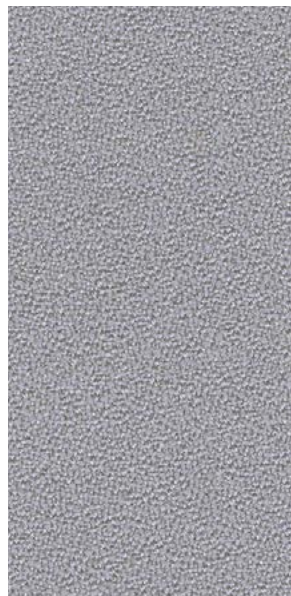
COURGETTE
JA201



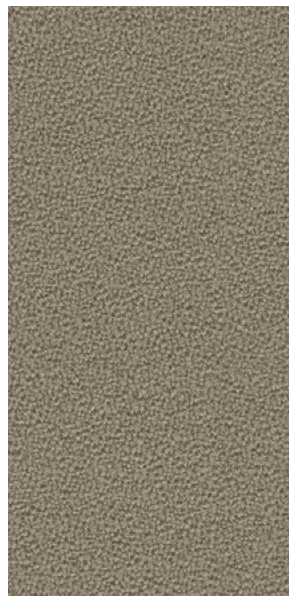
PURPLE
JA157



PORCELAIN
JA024



ARISTOTLE
JA416



CERES
JA409

[VIEW & ORDER SAMPLES](#)



BLAZER

BLAZER IS A CLASSIC PURE NEW WOOL UPHOLSTERY FABRIC WITH A BILLIARD CLOTH FELTED FINISH. IT IS MADE FROM PREMIUM NEW ZEALAND LAMBSWOOL, WHERE RESPONSIBLE FARMING PROVIDES THE HIGHEST QUALITY RAW MATERIAL - SOFT, CLEAN AND BRIGHT - WHICH IS IDEAL FOR SPINNING, WEAVING AND DYEING. THE COLOUR PALETTE IS AN EXCITING MIX OF SOLIDS AND MÉLANGES ACROSS THE FULL COLOUR SPECTRUM, CREATING AN ACCOMPLISHED FABRIC SUITABLE FOR WIDE RANGING FURNITURE APPLICATIONS.



SURREY
CUZ1E



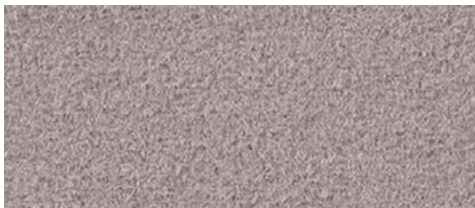
SILVERDALE
CUZ28



STANFORD
CUZ2R



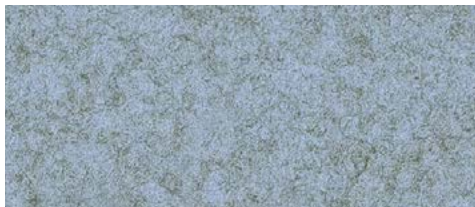
DARTMOUTH
CUZ2Q



FAIRFIELD
CUZ47



ST ANDREWS
CUZ86



PLYMOUTH
CUZ1R



100% VIRGIN WOOL
AVAILABLE IN 50 COLOURWAYS

[VIEW & ORDER SAMPLES](#)

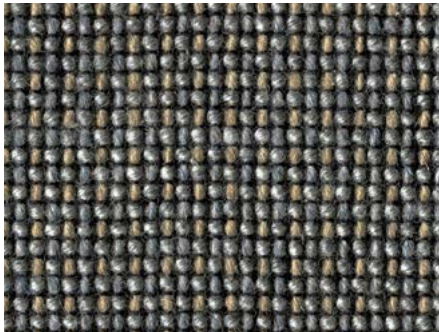
CRAGGAN



SWALE
ZAN09



SCREE
ZAN10



GRAVEL
ZAN08



CAIRN
ZAN02

INFLUENCED BY THE POWERS OF NATURE, CRAGGAN EMANATES A RUGGED LANDSCAPE WEATHERED BY THE ELEMENTS AND ACCENTED BY TOUCHES OF BRIGHT FLORA AMONG BARREN MOORLAND. THIS RICH WOOLLEN FABRIC IS ENHANCED BY A DELICATE HIGHLIGHT SHADE THAT SITS QUIETLY IN THE BACKGROUND OF THIS SIMPLE CHUNKY WEAVE CREATING A RAW, YET INVITING UPHOLSTERY FABRIC.



100% VIRGIN WOOL
AVAILABLE IN 10 COLOURWAYS

[VIEW & ORDER SAMPLES](#)



DECA

DESIGN MEETS PERFORMANCE, DECA EPITOMISES STYLE WITHOUT COMPROMISE. ENGINEERED FROM POLYURETHANE (PU) TO WITHSTAND INTENSE HEAT AND MOISTURE, THIS SUPER SOFT VEGAN FRIENDLY ALTERNATIVE TO LEATHER BLENDS AESTHETIC QUALITIES WITH TECHNICAL CAPABILITIES. IT'S ALSO BLEACH CLEANABLE, MAKING IT PERFECT FOR THE MOST DEMANDING OF COMMERCIAL INTERIORS IN THE POST COVID-19 AGE. PHTHALATE AND DMF FREE, DECA IS AN ENVIRONMENTALLY PREFERABLE ALTERNATIVE TO VINYL.





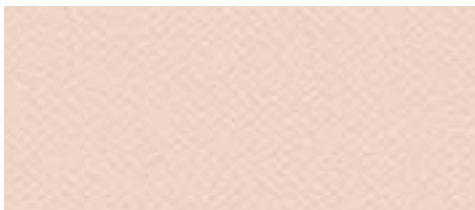
JUJ

DEC06



TIEN

DEC09



DECADENT

DEC08



DIME

DEC04



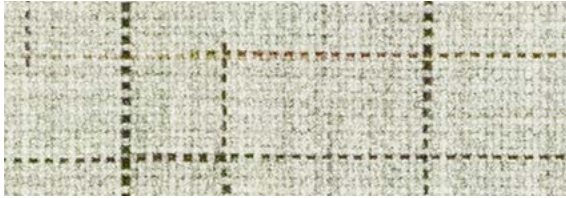
TENACA

DEC12



SURFACE: 100% PU, SUBSTRATE: 100% COTTON
AVAILABLE IN 20 COLOURWAYS

[VIEW & ORDER SAMPLES](#)



TANG

KOY01



ZEN

KOY04



TOKYO

KOY02



MUSO

KOY05



KOBE

KOY03



OSAKA

KOY06



90% WOOL, 10% POLYAMIDE
AVAILABLE IN 6 COLOURWAYS

[VIEW & ORDER SAMPLES](#)



KYOTO

TAKING ITS CUE FROM TRADITIONAL JAPANESE TEXTILES, KYOTO FEATURES AN INNOVATIVE PRINTED YARN WHICH CREATES A FLUID AND FLUCTUATING CHECK, PERFECTLY COMPLEMENTED BY THE RELAXED AESTHETIC OF THE LIGHTLY TEXTURED FABRIC. CRAFTED TO WORK IN HARMONY AS A TEXTILE PAIRING, THE STRIATED GRID OF KYOTO IS BEAUTIFULLY BALANCED BY THE VERSATILE, HOPSACK WEAVE OF SUMI - MAKING THESE TWO ELEGANTLY REFINED FABRICS IDEAL TO FEATURE ALONGSIDE ONE ANOTHER.



WATERLOO

MLF21



ARCHWAY

MLF02



TUFNELL

MLF18



TOOTING

MLF17



HAMMERSMITH

FST04

70% VIRGIN WOOL, 30% FLAX

MAIN LINE FLAX IS AVAILABLE IN 41 COLOURWAYS

70% VIRGIN WOOL, 30% FLAX

MAIN LINE FLAX STRIPE IS AVAILABLE IN 8 COLOURWAYS

[VIEW & ORDER SAMPLES](#)



Blå Station



MAIN LINE FLAX & MAIN LINE FLAX STRIPE



INDOOR ADVANTAGE GOLD FURNITURE



EU Ecolabel : UK/16/005

A SYMBOL OF PURITY, WILD FLAX HAS BEEN USED IN TEXTILES FOR THOUSANDS OF YEARS THANKS TO ITS SOFT, STRONG, LONG AND SMOOTH FIBRES FOUND INSIDE THE STEM OF THE PLANT. THE FIBRE IS SPUN INTO A 70-30 WOOL FLAX BLEND, THEN FIBRE-DYED TO CREATE BEAUTIFUL MIXTURE YARNS WHICH ARE WOVEN INTO INTERESTING SOLIDS AND CROSS-COLOURS INSPIRED BY THE RICH TONES OF RARE JEWELS. MAIN LINE FLAX IS THE NATURAL PROGRESSION OF OUR ALL-TIME FAVOURITE MAIN LINE PLUS FABRIC, BUILDING ON OUR INDUSTRY-LEADING BAST FIBRE EXPERTISE.



CRESSIDA

IF112



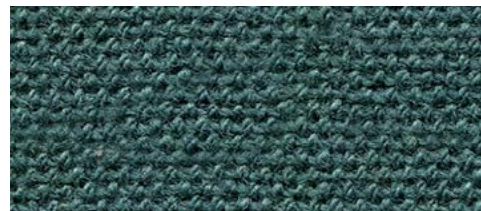
WEDGWOOD

IF027



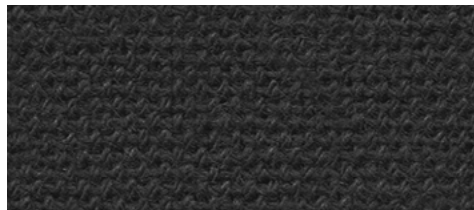
LEAD

IF058



MERMAID

IF231

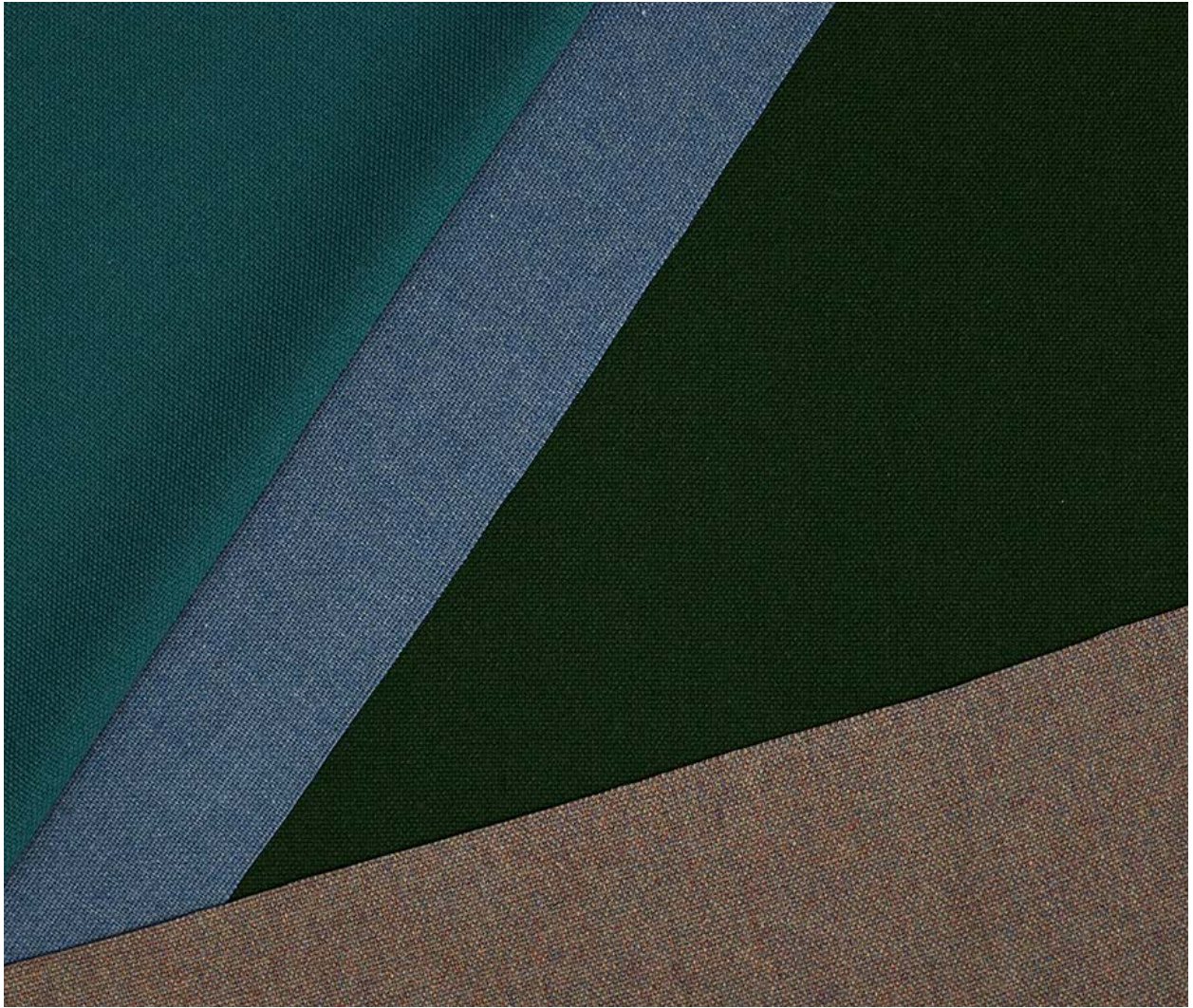


CARBON

IF252

67% WOOL, 20% FLAME RETARDANT VISCOSE, 13% VISCOSE
AVAILABLE IN 23 COLOURWAYS

[VIEW & ORDER SAMPLES](#)



MAIN LINE PLUS

ONE OF THE MOST POPULAR SEATING FABRICS IN THE CAMIRA COLLECTION WHICH HAS SOLD OVER 30 MILLION METRES SINCE LAUNCH. AVAILABLE IN 23 SHADES, THIS ALL-PURPOSE DOBBY WEAVE FABRIC GIVES A SMART APPEARANCE TO A WIDE ARRAY OF CONTEMPORARY FURNITURE.



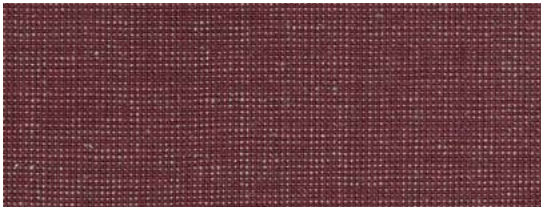
PATINA

ONLY BY TAKING A DEEP BREATH AND SLOWING DOWN DO WE BECOME AWARE OF OUR SURROUNDINGS AND THE PATTERN IN NATURE IS REVEALED TO US. PATINA IS DESIGNING WITH NATURE TO ACHIEVE BEAUTY WITH PERFORMANCE. THE WHITE FLECKS SCATTERED ACROSS THE SURFACE ARE CREATED BY THE FLAX CONTENT, JUST AS FLAX FLOWERS WOULD APPEAR IN THE FIELDS FROM WHICH IT IS GROWN. THE PALETTE TAKES ITS CUES FROM NATURE, ALLOWING ITS NATURAL BEAUTY TO SHINE THROUGH.

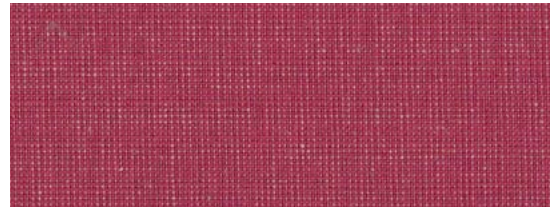


69% WOOL, 22% FLAX, 8% POLYAMIDE, 1% VISCOSE
AVAILABLE IN 43 COLOURWAYS

[VIEW & ORDER SAMPLES](#)



LACQUER
PAT42



COVERED
PAT14



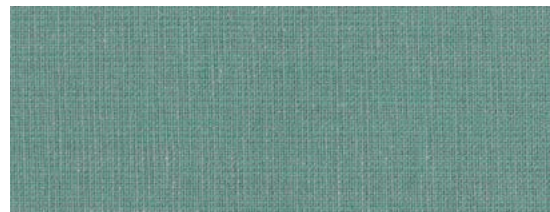
STRIATED
PAT40



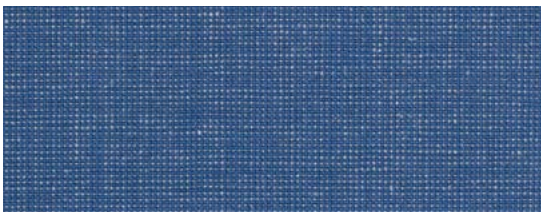
LAYERED
PAT12



VENEER
PAT04



WEATHERED
PAT01



RECLAIMED
PAT06



PHOENIX

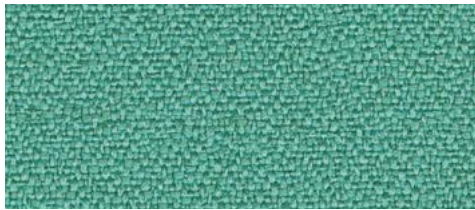
PHOENIX IS A CLASSIC CRÊPE WEAVE SYNTHETIC FABRIC, AVAILABLE TO ORDER FOR HOME INTERIORS WITH A FLAME RETARDANT BACKING WHICH UPLIFTS FLAMMABILITY PERFORMANCE TO UK DOMESTIC CERTIFICATION. IT CAN BE ORDERED IN ANY OF OUR STANDARD PHOENIX COLOURWAYS. PLEASE CONTACT US FOR MORE INFORMATION ABOUT MINIMUMS AND LEADTIMES.



SOMBRERO
YP046



SANDSTORM
YP107



CAMPECHE
YP112



CURACAO
YP005



BLUEBELL
YP097



BLIZZARD
YP081



100% POLYESTER
AVAILABLE IN 21 COLOURWAYS

[VIEW ALL COLOURWAYS](#)

SILK

SILK IS A BEAUTIFULLY CONSTRUCTED DOBBY WEAVE FABRIC CREATED WITH A THREE TONE TWEED EFFECT, RICH IN RUSTIC CHARM. MADE FROM A BLEND OF THREE NATURAL FIBRES: SILK, FLAX AND WOOL. THE SILK ELEMENT IS RECYCLED CONTENT DERIVED FROM 'NOILS' WHICH ARE THE SHORT FIBRE WASTE REMNANTS FROM THE COMBING PROCESS BEFORE SPINNING. THIS HAS A FANTASTIC ECO-STORY, A LUXURIOUSLY SOFT HANDLE AND A COLOUR PALETTE OF MUTED PASTELS WITH BRIGHTER HIGHLIGHTS.



67% WOOL, 22% FLAX, 11% SILK
AVAILABLE IN 20 COLOURWAYS

[VIEW & ORDER SAMPLES](#)

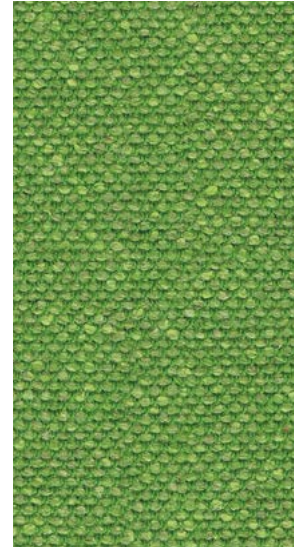




Living Room



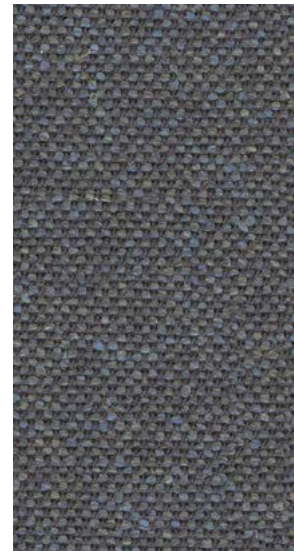
BYZANTINE
SLK03



INCENSE
SLK06



BRUNEI
SLK08



EMPEROR
SLK16



SUMI

MIRRORING THE REDUCED AESTHETICS OF JAPANESE INK WASH PAINTING, SUMI EMBODIES SIMPLICITY OF STYLE. RESPECTING THE AUTHENTICITY OF NATURAL MATERIALS AND QUALITY CRAFTSMANSHIP, IT IS MADE FROM WORSTED WOVEN WOOL USING FINE MARL YARNS AND IS DESIGNED TO WORK IN HARMONY AS A TEXTILE PAIRING WITH THE ELEGANT, STRIATED GRID OF KYOTO.



TANG

SUR01



ZEN

SUR04



TOKYO

SUR02



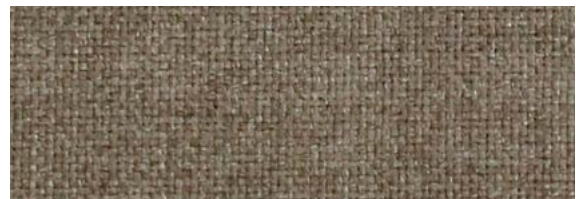
MUSO

SUR05



KOBE

SUR03



OSAKA

SUR06



90% WOOL, 10% POLYAMIDE
AVAILABLE IN 6 COLOURWAYS

[VIEW & ORDER SAMPLES](#)



PARTNER
LDS16



LEVEL
LDS20



FATE
LDS07



VENTURE
LDS05



FELLOWSHIP
LDS66



WARMTH
LDS67

SYNERGY

SYNERGY IS A SOFT HANDLE WORSTED WOOL RICH FABRIC, FEATURING EXQUISITE FIBRE DYED SHADES AND SUMPTUOUS PIECE DYED SOLIDS. IT ALL COMES TOGETHER IN A BEAUTIFUL FELTED FINISH IN OUR LARGEST COLOUR OFFERING OF 75 INTELLIGENT SHADES. WE HAVE PARTNERED WITH JUST A DROP, THE INTERNATIONAL WATER AID CHARITY, AND FOR EVERY METRE OF FABRIC WE SELL, WE MAKE A DONATION TO A SPECIFIC PROJECT AROUND THE WORLD. OUR DONATION IS MATCHED BY WOOLS OF NEW ZEALAND AND TOGETHER WE HELP PROVIDE CLEAN AND SAFE WATER TO THOSE IN NEED.



95% VIRGIN WOOL, 5% POLYAMIDE
AVAILABLE IN 75 COLOURWAYS

[VIEW & ORDER SAMPLES](#)

YOREDALE

A BEAUTIFULLY TEXTURED, NATURALLY SUSTAINABLE BRITISH WOOL FABRIC, INSPIRED, DESIGNED AND MANUFACTURED IN OUR YORKSHIRE HOME COUNTY. TAKING ITS NAME FROM THE ANCIENT TITLE OF WENSLEYDALE, YOREDALE ECHOES THE UNDULATING LANDSCAPE OF THE YORKSHIRE DALES IN COLOURWAYS REFLECTIVE OF DRY STONE WALLS, STREAMS AND HEATHER MOORLANDS OFTEN DEPICTED BY FAMOUS YORKSHIRE BORN ARTIST DAVID HOCKNEY. YOREDALE HAS A CHUNKY WEAVE ACCENTUATED BY A BOUCLÉ STYLE YARN WHICH COMES TO LIFE IN A TIMELESS, TEXTURED FABRIC WHICH BLENDS RICH HISTORY WITH A CONTEMPORARY APPEAL.



95% WOOL, 3% POLYESTER, 2% POLYAMIDE
AVAILABLE IN 25 COLOURWAYS

[VIEW & ORDER SAMPLES](#)





LEYBURN

UDA25



CRAY

UDA10



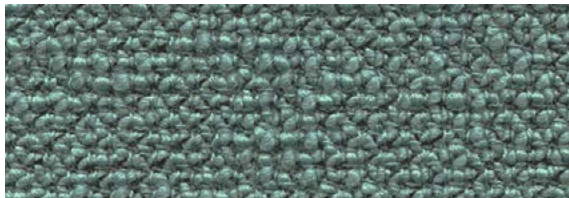
HARDRAW

UDA04



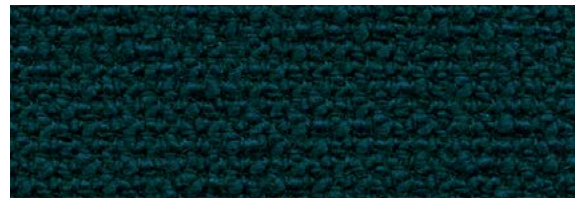
SIMONSTONE

UDA05



BURNSALL

UDA22



RIBBLE

UDA17



CARPERBY

UDA07

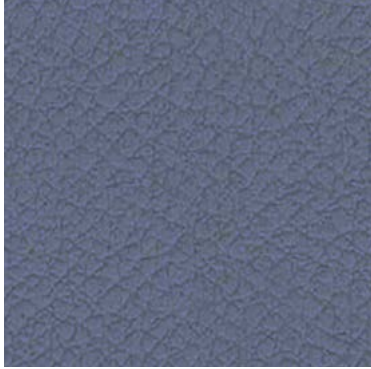


KIDSTONE

UDA02



BUBBLES
ITA36



PORCELAIN
ITA15



OATMEAL
ITA02



SEAL
ITA01



KOALA
ITA04



HIPPO
ITA07

SURFACE: 98% PVC, 2%. PU. SUBSTRATE: 100% COTTON
AVAILABLE IN 51 COLOURWAYS

[VIEW & ORDER SAMPLES](#)



VITA

VITA IS A LEATHER-LOOK VINYL, WITH A SUBTLE SURFACE GRAIN EFFECT AND FULL MATT APPEARANCE. IT COMES WITH AN ANTI-MICROBIAL FINISH AND IS FULLY BLEACH CLEANABLE FOR QUICK WIPE DOWN DISINFECTION. IT IS AVAILABLE IN A BROAD PALETTE OF 51 CONSIDERED COLOURWAYS, DESIGNED TO ENHANCE AND CONNECT WITH OTHER CAMIRA FABRICS SO CAN BE USED ON SEAT PADS IN COMBINATION WITH WOVEN UPHOLSTERY. VITA DOES NOT CONTAIN PHTHALATE PLASTICISERS OR HEAVY METALS, YET REMAINS SOFT, STRETCHY AND PLIABLE.



ZAP

DESIGNED ORIGINALLY BY DANISH-AMERICAN DESIGNER JENS RISOM IN THE 1960S, REIMAGINED BY CAMIRA FOR TODAY. ZAP COMPRISES CAREFULLY CURATED TONE ON TONE ELEGANT COLOURWAYS ALONGSIDE THE CONTRASTING PUNCHY BRIGHTS OF THE ORIGINAL. AS RISOM SAID, "ZAP HAS THE SOFTNESS OF YOUNG WOOL, THE TOUGHNESS OF A STEEL WATCH SPRING. ZAP IS INCOMPARABLE WHEREVER SUPER-WEAR IS DESIRED WITH COLOUR IMPACT, EXCITEMENT, INTEREST. ZAP IS A NOW AND FUTURE FABRIC."

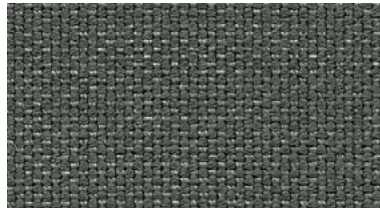
DESIGNED BY JENS RISOM.
REIMAGINED BY CAMIRA.



WHOMP
ZAP28



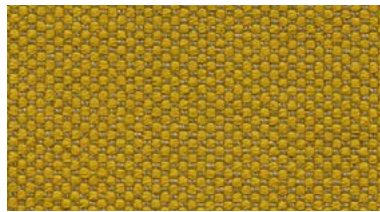
ZOINK
ZAP24



PUFF
ZAP26



WHOOSH
ZAP02



SNAP
ZAP01



WHAM
ZAP23



SPLAT
ZAP20



FLUMP
ZAP17



83% VIRGIN WOOL, 17% POLYAMIDE
AVAILABLE IN 30 COLOURWAYS

[VIEW & ORDER SAMPLES](#)

QUICK SHIP FABRICS



YELLOW BAND – QUICK SHIP COLOURWAYS WHICH ARE FULLY STOCK BACKED FOR IMMEDIATE DESPATCH. OTHER COLOURS ALSO USUALLY AVAILABLE FROM STOCK.

ADVANTAGE HOME 28 COLOURWAYS AVAILABLE



PERSIAN
HHM101



KINGFISHER
HHM122



SEA BLUE
HHM017



ADRIATIC
HHM001

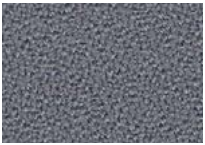


GRANITE
HHM009

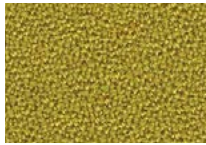


PEWTER
HHM072

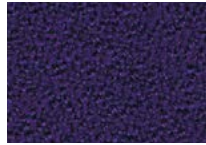
AQUARIUS 27 COLOURWAYS AVAILABLE, 10 QUICK SHIP



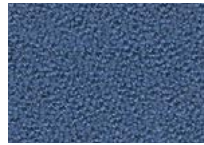
RHINO
JA022



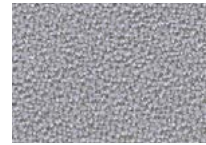
COURGETTE
JA201



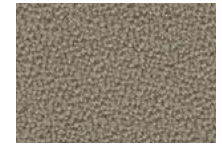
PURPLE
JA157



PORCELAIN
JA024



ARISTOTLE
JA416



CERES
JA409

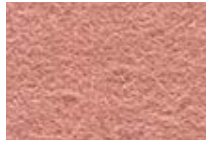
BLAZER 50 COLOURWAYS AVAILABLE, 41 QUICK SHIP



SURREY
CUZ1E



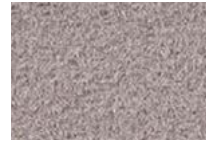
SILVERDALE
CUZ28



STANFORD
CUZ2R



DARTMOUTH
CUZ2Q



FAIRFIELD
CUZ47



ST ANDREWS
CUZ86



PLYMOUTH
CUZ1R

CRAGGAN 10 COLOURWAYS AVAILABLE



SWALE
ZAN09



SCREE
ZAN10



GRAVEL
ZAN08



CAIRN
ZAN02

DECA 20 COLOURWAYS AVAILABLE



JUU
DEC06



TIEN
DEC09



DECADENT
DEC08

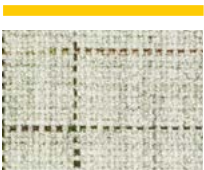


DIME
DEC04

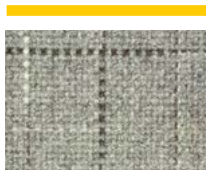


TENACA
DEC12

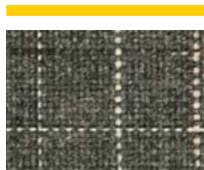
KYOTO 6 COLOURWAYS AVAILABLE



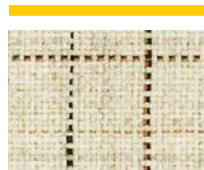
TANG
KOY01



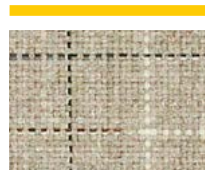
TOKYO
KOY02



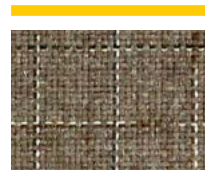
KOBE
KOY03



ZEN
KOY04



MUSO
KOY05



OSAKA
KOY06

MAIN LINE FLAX 41 COLOURWAYS AVAILABLE, 25 QUICK SHIP



WATERLOO
MLF21



ARCHWAY
MLF02



TUFNELL
MLF18



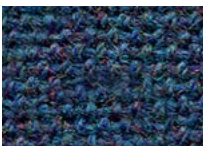
TOOTING
MLF17

MAIN LINE FLAX STRIPE 8 COLOURWAYS AVAILABLE



HAMMERSMITH
FST04

MAIN LINE PLUS 23 COLOURWAYS AVAILABLE, 10 QUICK SHIP



CRESSIDA
IF112



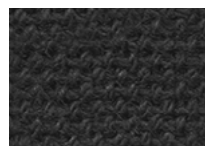
WEDGWOOD
IF027



LEAD
IF058



MERMAID
IF231

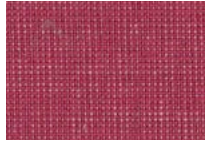


CARBON
IF252

PATINA 43 COLOURWAYS AVAILABLE



LACQUER
PAT42



COVERED
PAT14



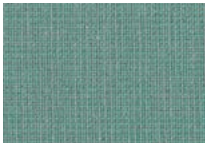
STRIATED
PAT40



LAYERED
PAT12



VENEER
PAT04



WEATHERED
PAT01



RECLAIMED
PAT06

PHOENIX 21 COLOURWAYS AVAILABLE



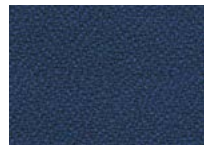
SOMBRERO
YP046



SANDSTORM
YP107



CAMPECHE
YP112



CURACAO
YP005



BLUEBELL
YP097

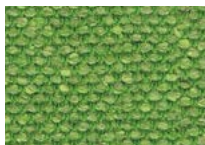


BLIZZARD
YP081

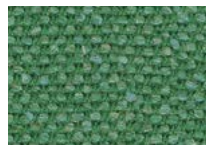
SILK 20 COLOURWAYS AVAILABLE, 3 QUICK SHIP



BYZANTINE
SLK03



INCENSE
SLK06

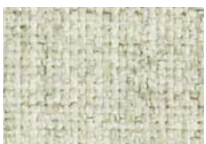


BRUNEI
SLK08

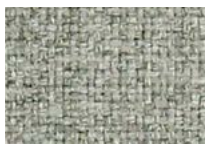


EMPEROR
SLK16

SUMI 6 COLOURWAYS AVAILABLE



TANG
SUR01



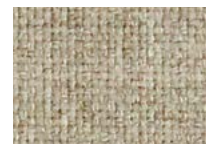
TOKYO
SUR02



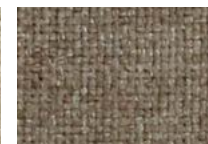
KOBE
SUR03



ZEN
SUR04



MUSO
SUR05



OSAKA
SUR06

SYNERGY 75 COLOURWAYS AVAILABLE, 50 QUICK SHIP



PARTNER
LDS16



LEVEL
LDS20



FATE
LDS07



VENTURE
LDS05



FELLOWSHIP
LDS66

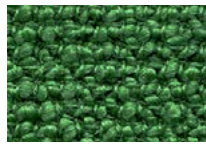


WARMTH
LDS67

YOREDALE 25 COLOURWAYS AVAILABLE



LEYBURN
UDA25



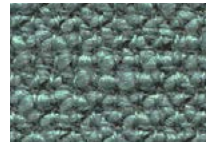
CRAY
UDA10



HARDDRAW
UDA04



SIMONSTONE
UDA05



BURNSALL
UDA22



RIBBLE
UDA17



CARPERBY
UDA07



KIDSTONE
UDA02

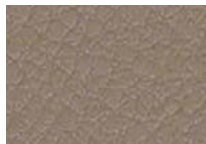
VITA 51 COLOURWAYS AVAILABLE, 20 QUICK SHIP



BUBBLES
ITA36



PORCELAIN
ITA15



OATMEAL
ITA02



SEAL
ITA01



KOALA
ITA04

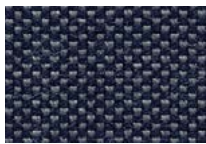


HIPPO
ITA07

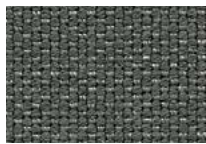
ZAP 30 COLOURWAYS AVAILABLE



WHOMP
ZAP28



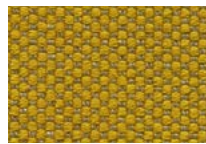
ZOINK
ZAP24



PUFF
ZAP26



WHOOSH
ZAP02



SNAP
ZAP01



WHAM
ZAP23



SPLAT
ZAP20



FLUMP
ZAP17





HOME SECURITY - WHAT YOU NEED TO KNOW ABOUT UK FLAMMABILITY REGULATIONS FOR DOMESTIC INTERIORS

UK LAW

FIRE SAFETY OF FURNITURE AND FURNISHINGS IN THE HOME IS GOVERNED BY THE FURNITURE AND FURNISHINGS (FIRE) (SAFETY) REGULATIONS 1988 (AMENDED 1989, 1993 AND 2010). THESE ARE UK LAW AND CONTAIN THE FLAMMABILITY REQUIREMENTS FOR FABRICS AND UPHOLSTERY COMPONENTS WHICH INCLUDE THE VISIBLE AND NON-VISIBLE COVER FABRICS AND ALL FILLING MATERIALS. THE PROCEDURES FOR ASSESSING FLAMMABILITY PERFORMANCE ARE CONTAINED IN A SERIES OF SCHEDULES WHICH DRAW ON VARIOUS BRITISH STANDARD TEST METHODS.

WHO IS RESPONSIBLE

THE FIRST SUPPLIER OF DOMESTIC UPHOLSTERED FURNITURE IN THE UK IS LEGALLY RESPONSIBLE FOR ENSURING THE REGULATIONS ARE MET. THE "FIRST SUPPLIER" COULD BE A FURNITURE MANUFACTURER, IMPORTER, DEALER OR RETAILER. THERE ARE ALSO SPECIFIC LABELLING REQUIREMENTS, DETAILED IN SCHEDULES 6 AND 7, WHICH NEED TO BE ADDRESSED BY FURNITURE MANUFACTURERS AND IMPORTERS.

FLAMMABILITY TESTING

FLAMMABILITY TESTING FOR FABRICS IS COVERED BY SCHEDULE 4 PART 1 (CIGARETTE) AND SCHEDULE 5 PART 1 (MATCH). THE TESTS ARE CARRIED OUT OVER A NON-COMBUSTION MODIFIED 22KG POLYURETHANE FOAM AS A "WORST CASE" FOAM AND THE MATCH IS APPLIED FOR 20 SECONDS. IN THE CONTRACT STANDARD A CMHR 35KG FOAM IS USED AND THE MATCH APPLICATION TIME IS 15 SECONDS.

INTERLINERS

USE OF INTERLINERS (FLAME RETARDANT BARRIER FABRICS) IS DETAILED IN SCHEDULE 3 OF THE REGULATIONS AND IS ONLY PERMITTED WITH COVER FABRICS CONTAINING AT LEAST 75% BY WEIGHT OF NATURAL FIBRES, IN WHICH CASE THEY NEED TO PASS THE REQUIREMENTS OF THE CIGARETTE TEST ONLY. INTERLINERS CANNOT BE USED IN CONJUNCTION WITH SYNTHETIC COVER FABRICS SUCH AS POLYESTER AND POLYPROPYLENE. SYNTHETIC FABRICS ARE LIKELY TO REQUIRE AN ADDITIONAL BACKCOATING TO COMPLY WITH DOMESTIC REGULATIONS.

LABELLING

ALL UPHOLSTERED FURNITURE MUST CARRY A DISPLAY SWING TICKET AT THE POINT OF SALE TO INDICATE THAT THE PRODUCT COMPLIES WITH THE REGULATIONS, WITH TWO VARIATIONS OF SWING TICKET PERMITTED DEPENDING ON WHETHER OR NOT AN INTERLINER HAS BEEN USED. IN ADDITION, A PERMANENT LABEL MUST ALSO BE SECURELY ATTACHED AND MAY APPEAR ON ANY EXTERNAL SURFACE OF THE FINISHED FURNITURE. SCHEDULES 6 AND 7 COVER DISPLAY SWING TICKETS AND PERMANENT LABELS RESPECTIVELY.

HOME HELP – GUIDE TO CLEANING AND DISINFECTION

CLEANING AND DISINFECTION HAVE BECOME EVEN MORE IMPORTANT IN THE AGE OF COVID-19. BUT PLEASE KEEP IN MIND THAT TEXTILES AREN'T SEEN AS A MAJOR CARRIER OF THE VIRUS AND IT'S THOUGHT TO SPREAD MORE EASILY FROM FREQUENTLY TOUCHED HARD SURFACES, SUCH AS PLASTIC, METAL AND GLASS.

REGULAR CLEANING HAS ALWAYS BEEN RECOMMENDED AS A WAY TO KEEP FABRICS LOOKING GOOD FOR LONGER, WITH A FEW STRAIGHTFORWARD GUIDELINES:

VACUUM FABRICS REGULARLY TO PREVENT BUILD UP OF DUST AND DIRT WHICH CAN ACT AS AN ABRADANT AND LEAD TO FABRICS WEARING OUT BEFORE THEIR TIME. REMOVE LOOSE CUSHIONS ON SOFAS TO GET TO THOSE AREAS WHICH HARBOUR BOTH CRUMBS AND LOST COINS.

GET TO STAINS QUICKLY, MOPPING UP ANY EXCESS LIQUID SPILLS, BEFORE THEY HAVE TIME TO SOAK IN OR DRY OUT. IF NEED BE USE UPHOLSTERY SHAMPOO OR LIQUID SOAP AND WARM WATER. BE CAREFUL NOT TO OVER WET FABRICS, ESPECIALLY WOOL, SO ALWAYS MAKE SURE A CLEAN CLOTH SOAKED IN SOAPY WATER IS WELL WRUNG OUT.

FOR DEEPER CLEANING AND DISINFECTION, WOOL CAN BE STEAM CLEANED, DRY CLEANED OR SIMPLY USE LIQUID SOAP IN WARM WATER, BEING CAREFUL NOT TO OVER WET THE FABRIC.

[VIEW GUIDE](#)



camira
H O M E

FULL TECHNICAL INFORMATION AVAILABLE AT
WWW.CAMIRAFABRICS.COM