



Colour Manifesto II

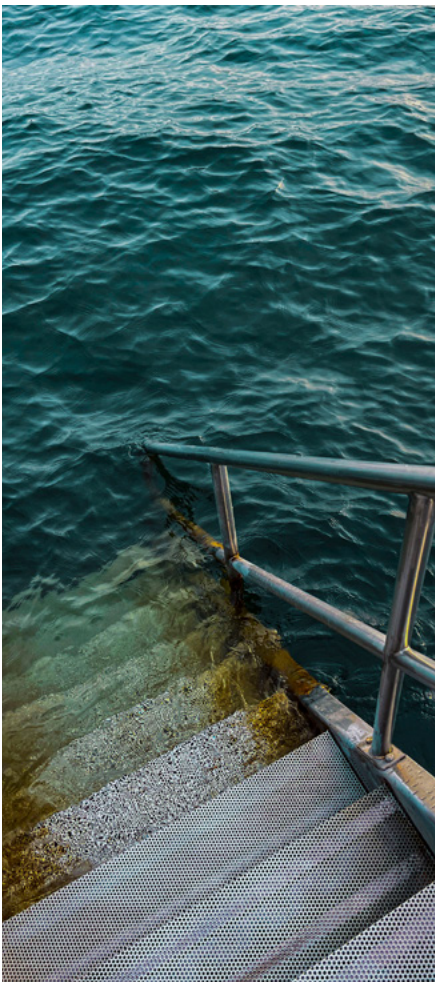
camira

This is our Colour Manifesto II.

Colour that transcends trend. For us colour isn't a final flourish, it's a guiding force from the start. The thread that runs through our design process long before product takes its final shape. By looking beyond trends we create palettes with depth and longevity, colours that resonate, evolve and endure in our portfolio.

Our Colour Manifesto speaks to the senses not just the eye. In environments or used for products, it shapes atmosphere and can support wellbeing, strengthen focus and spark creativity.

This is our Colour Manifesto, featuring five palettes and five moods, created in collaboration with Anna Starmer, to inspire interiors that will stand the test of time.



Mercurial

Ocean blues and deep teals flow like shifting tides, alive with changing light and a beautifully mercurial spirit.

P. 04-05



Renewal

Under a leafy canopy, mossy greens move from shadow to sunlit vibrancy, capturing a quiet sense of renewal.

P. 06-07



Indulgent

A bold indulgent palette inspired by petal-fresh blooms. Violets soften to lilacs, poppy and dahlia tones deepen, while apricot accents add delicate tones.

P. 08-09



Renaissance

Molten gold, bronze, and brushed copper take centre stage, their radiance grounded by black and white in a contemporary colour renaissance.

P. 10-11

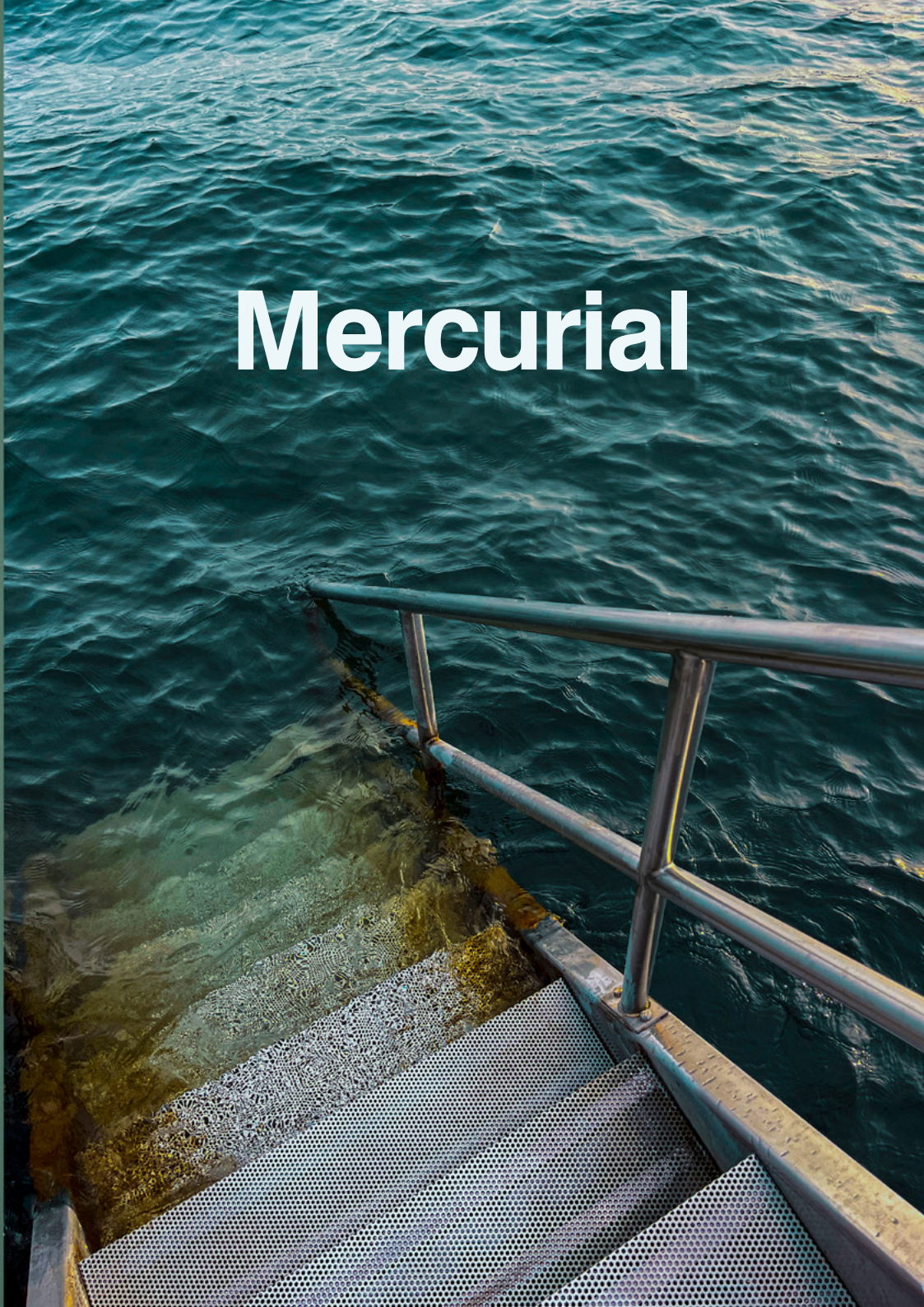


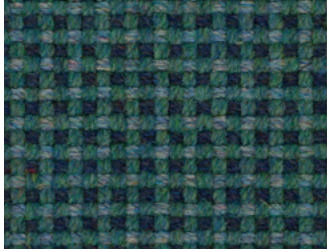
Constructive

Steely blues with copper and ochre capture the living city - purposeful, grounded and confidently constructive.

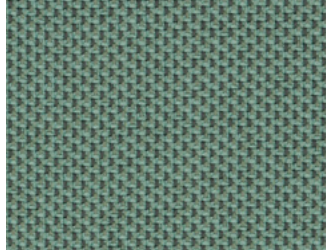
P. 12-13

Mercurial





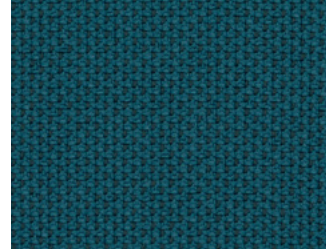
ReSKU 2.0
Rework | RES14



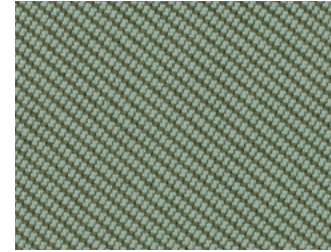
RePlay
Joy | REP07



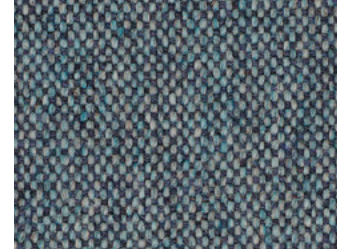
Blazer
Abertay | CUZ3B



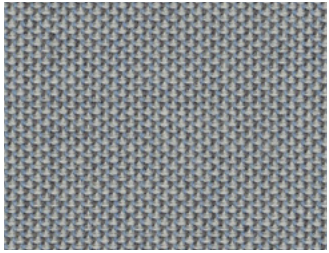
RePlay
Handstand | REP09



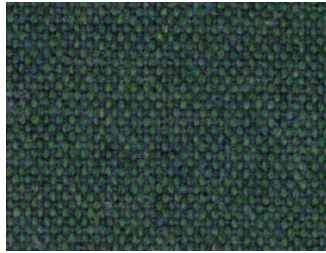
Oceanic
Rockweed | OOC24



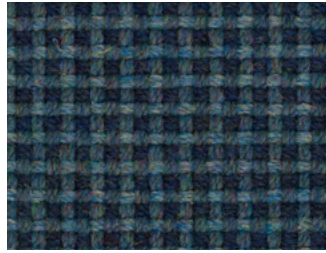
Main Line Flax
Westminster | MLF22



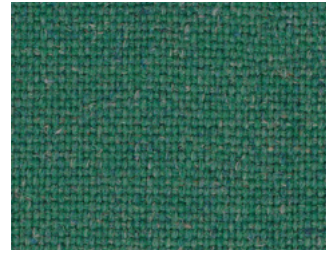
Penta
Purity | PEN23



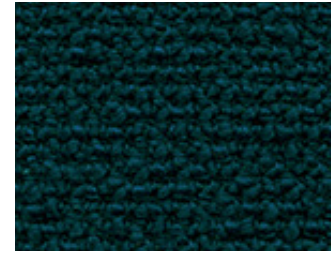
Main Line Flax
Greenford | MLF32



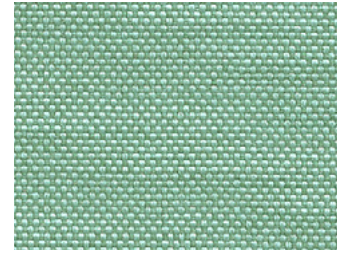
ReSKU 2.0
Rescind | RES17



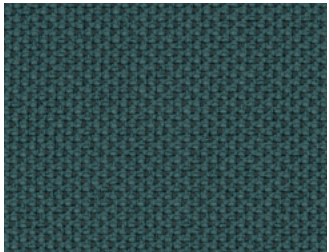
Main Line Flax
Harrow | MLF54



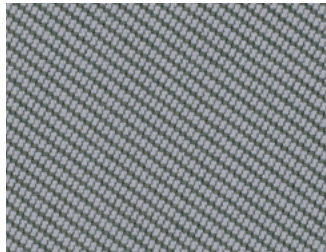
Yoredale
Ribble | UDA17



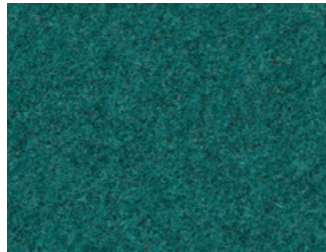
Quest
Urchin | QUE17



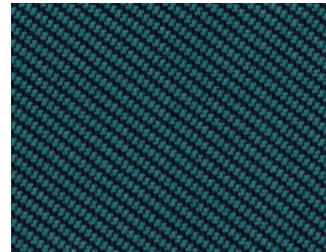
RePlay
Cheer | REP08



Oceanic
Seaspray | OOC21



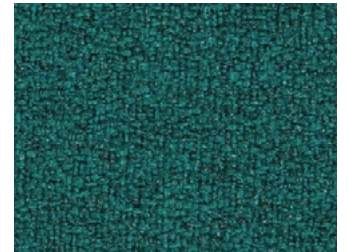
Blazer Lite
Admirer | LTH1C



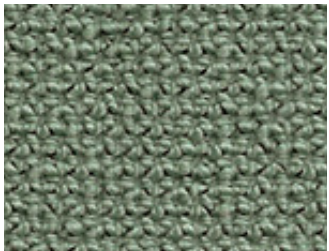
Oceanic
Cove | OOC22



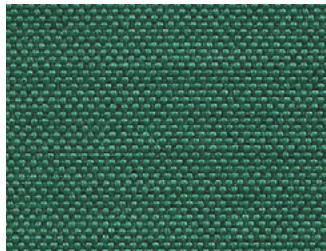
Main Line Flax
Hampstead | MLF53



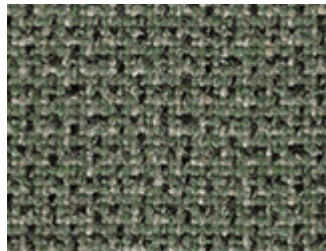
X2
Ratio | AK001



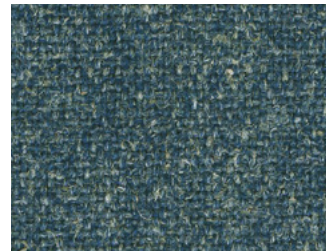
Yoredale
Grassington | UDA27



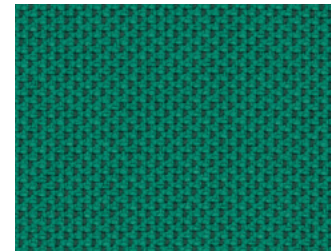
Quest
Kelp | QUE15



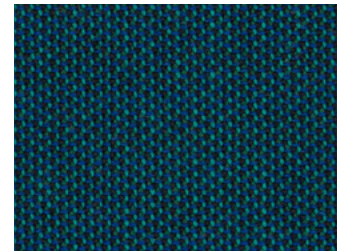
Main Line Twist
Blend | MLT11



Hemp
Trough | HWP20



RePlay
Step | REP10



Penta
Spectral | PEN09



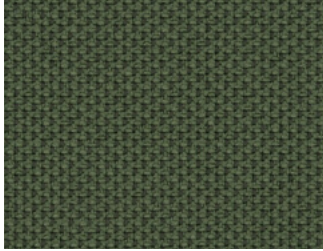
Renewal



ReSKU 2.0
Reinvent | RES12



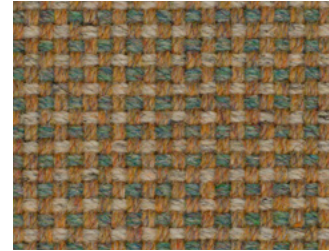
Synergy
Gather | LDS46



RePlay
Freestyle | REP11



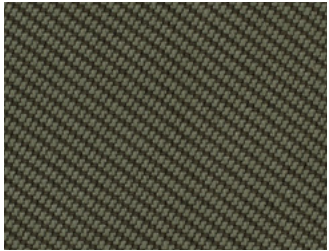
Hemp
Oat | HWP05



ReSKU 2.0
Recycle | RES10



Yoredale
Gayle | UDA08



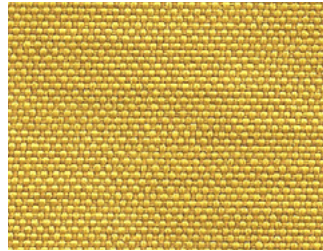
Oceanic
Nori | OOC19



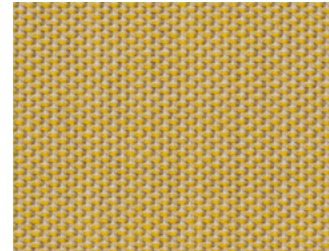
Main Line Flax
Kensington | MLF07



Synergy
Interfuse | LDS48



Quest
Sandstone | QUE20



Penta
Hue | PEN21



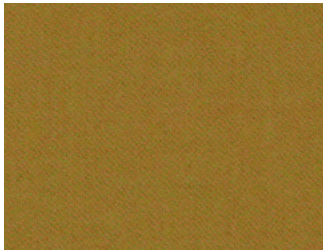
Hemp
Acre | HWP19



Blazer
Lucton | CUZ3M



Yoredale
Bronte | UDA28



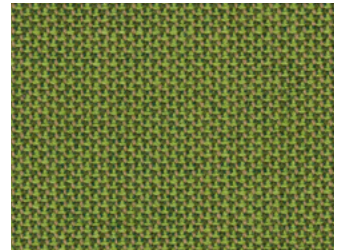
Synergy
Marry | LDS43



Blazer
Kingham | CUZ3U



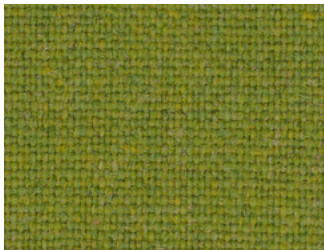
Blazer
Grantham | CUZ4E



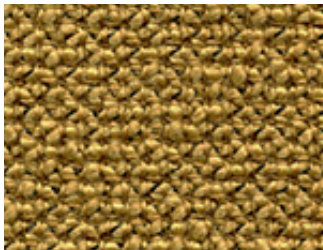
Penta
Bright | PEN08



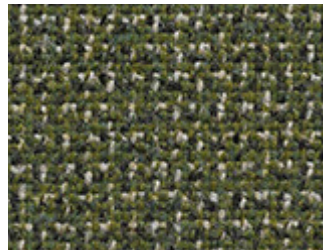
Main Line Flax
Upminster | MLF20



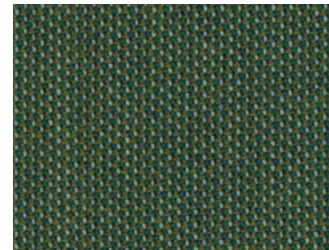
Main Line Flax
Woodford | MLF67



Yoredale
Wharfe | UDA18



Main Line Twist
Creel | MLT09

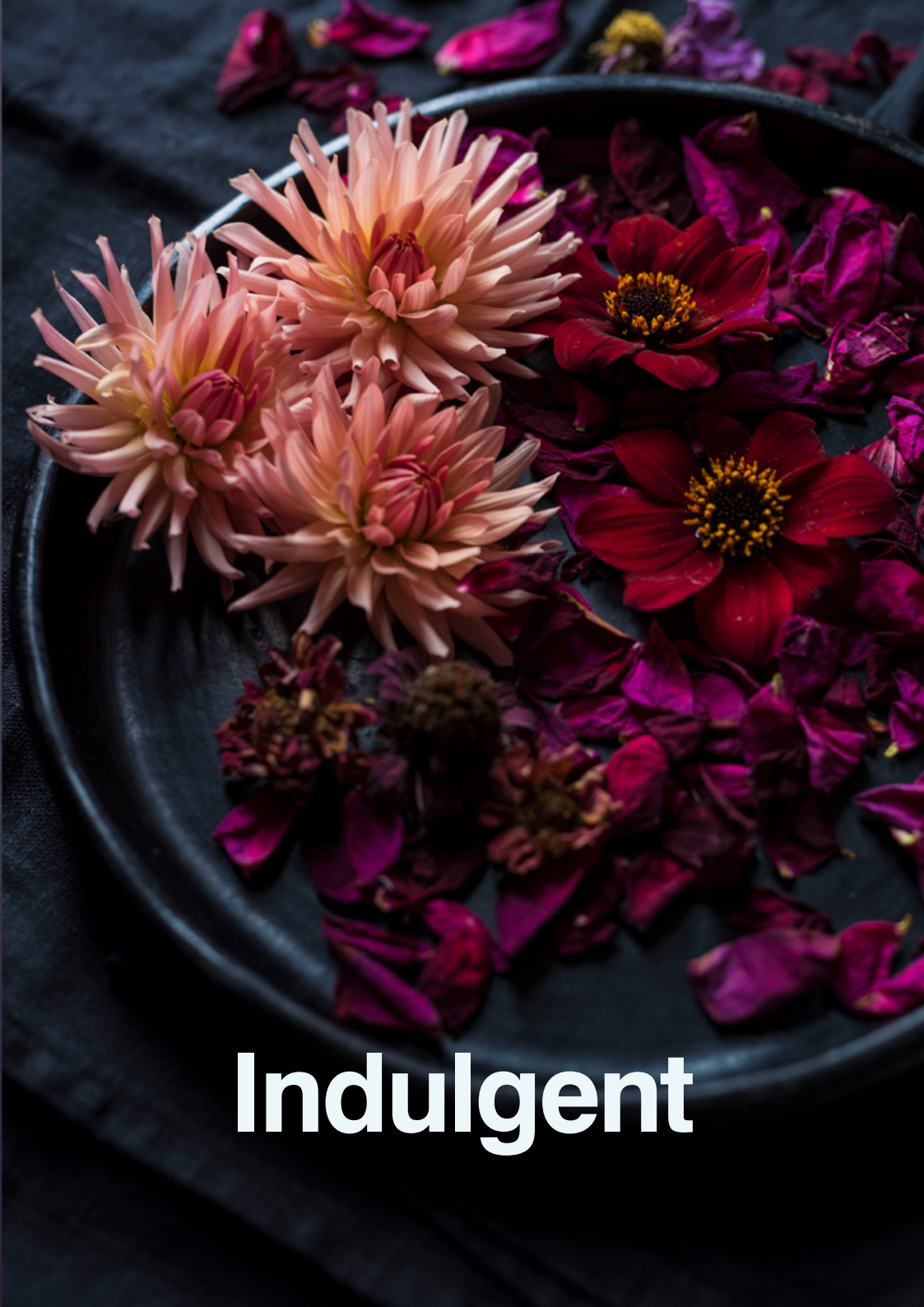


Penta
Goethe | PEN11

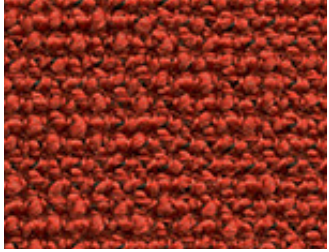


X2
Equation | AK004

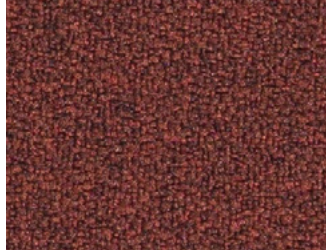
Please Note: Photographic fabric scans are not colour accurate. Always request actual fabric samples before ordering.



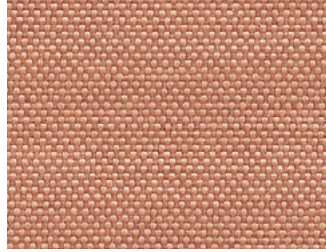
Indulgent



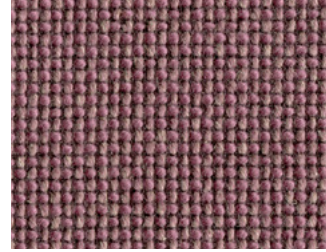
Yoredale
Walden | UDA13



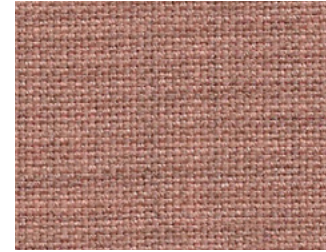
X2
Total | AK040



Quest
Shrimp | QUE26



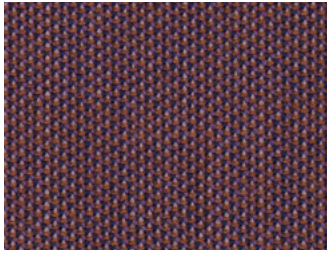
Craggan Flax
Wold | CRA15



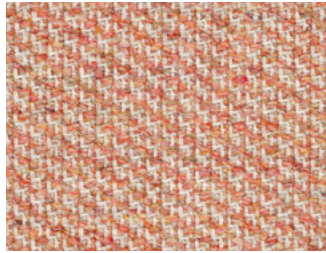
Sumi
Narita | SUR13



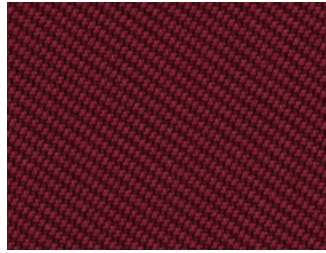
Main Line Flax
Blackwall | MLF46



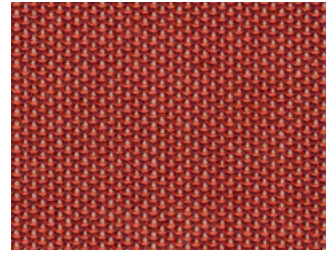
Penta
Wheel | PEN26



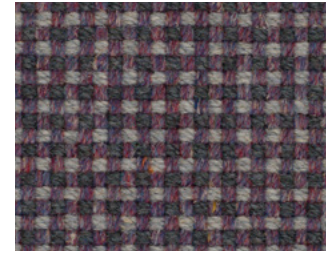
Revolution
Bloom | REV09



Oceanic
Rosita | OOC29



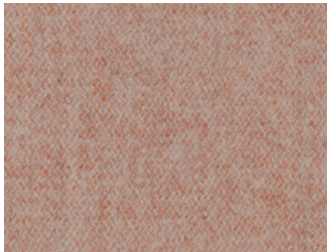
Penta
Radiance | PEN28



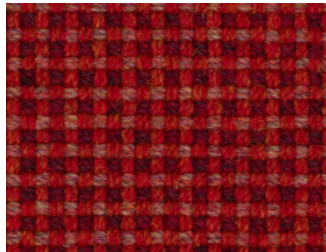
ReSKU 2.0
Recapture | RES07



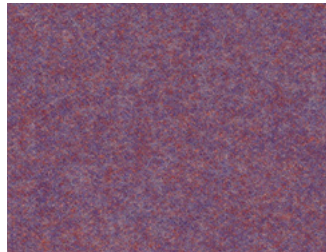
Blazer
Warwick | CUZ4L



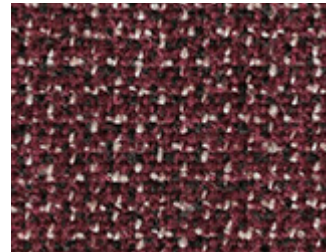
Synergy
Affinity | LDS74



ReSKU 2.0
Revamp | RES24



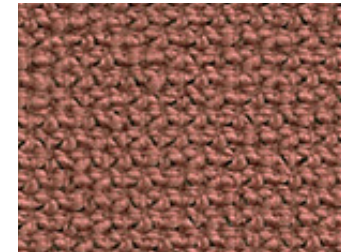
Synergy
Fellowship | LDS66



Main Line Twist
Crimp | MLT06



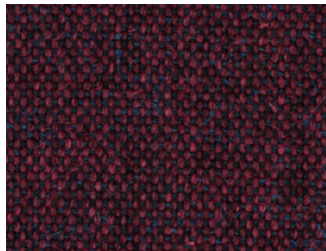
Main Line Flax
Barking | MLF45



Yoredale
Kettlewell | UDA33



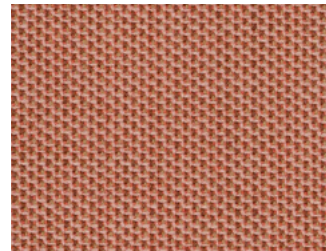
Yoredale
Skipton | UDA37



Main Line Flax
Northfields | MLF40



X2
Add | AK012



Penta
Marble | PEN29



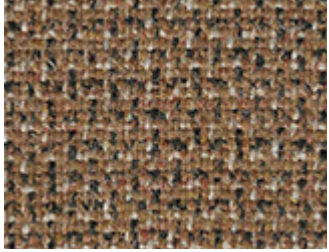
Yoredale
Swaledale | UDA38



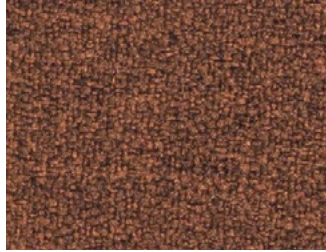
Synergy
Amiable | LDS79



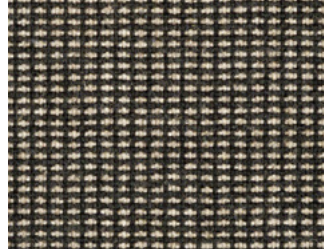
Renaissance



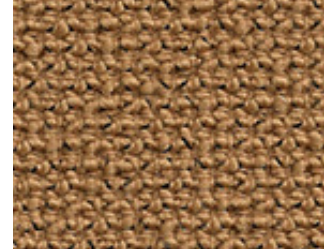
Main Line Twist
Ply | MLT10



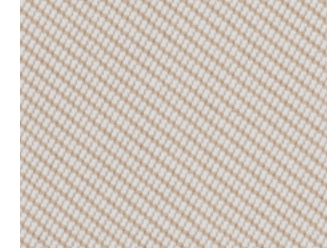
X2
Sum | AK039



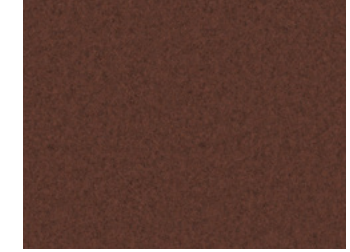
Monochrome Sett
Sett #3 | MLC02



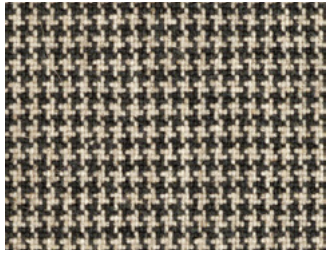
Yoredale
Horton | UDA30



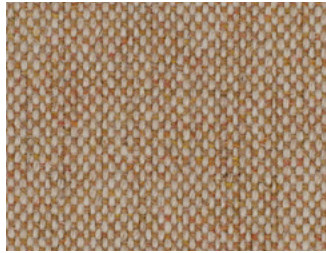
Oceanic
Scallop | OOC23



Blazer
Dunalk | CUZ4D



Monochrome Sett
Sett #6 | MLH01



Main Line Flax
Morden | MLF12



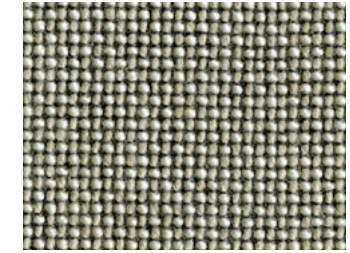
Monochrome Sett II
Sett #1 | MLG03



Blazer Lite
Compassion | LTH1A



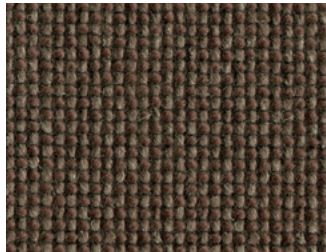
Yoredale
Thoraby | UDA06



Craggan Flax
Esker | CRA21



Quest
Salt | QUE22



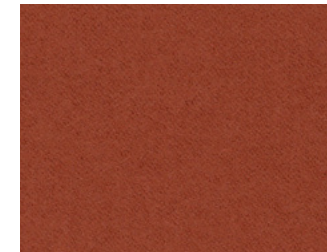
Craggan Flax
Drumlin | CRA12



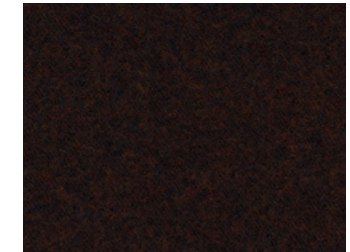
Oceanic
Sandy | OOC28



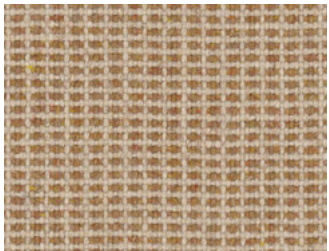
Rivet
Copper | EGL14



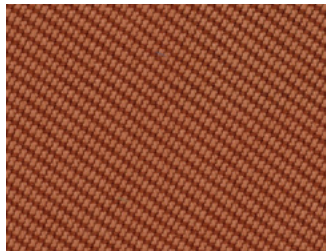
Synergy
Combo | LDS77



Synergy
Co-operate | LDS40



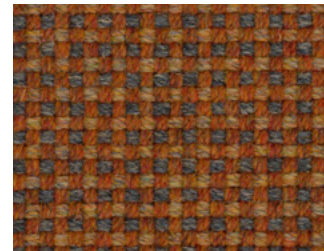
Monochrome Sett II
Sett #3 | MLC03



Oceanic
Buoy | OOC25



Yoredale
Gordale | UDA29



ReSKU 2.0
Regenerate | RES22



Monochrome Sett II
Sett #9 | MLL03

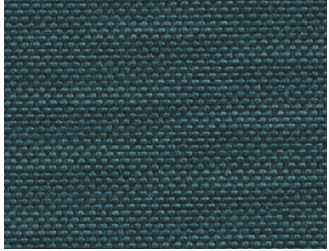


Main Line Flax
Pinner | MLF60

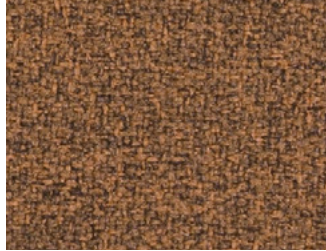
Please Note: Photographic fabric scans are not colour accurate. Always request actual fabric samples before ordering.



Constructive



Quest
Whelk | QUE08



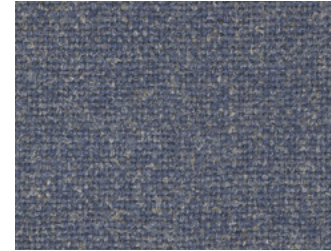
X2
Algorithm | AK037



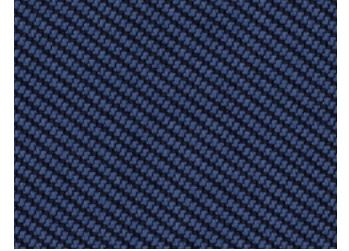
Era
Late | CSE43



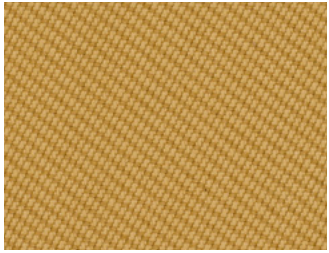
Blazer
Edinburgh | CUZ1Y



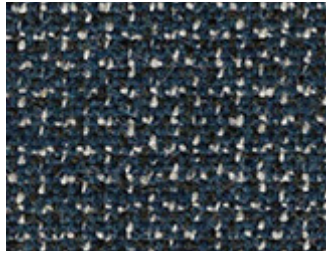
Hemp
Fallow | HWP28



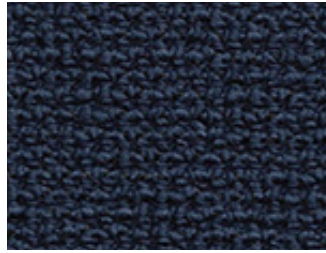
Oceanic
Tidal | OOC26



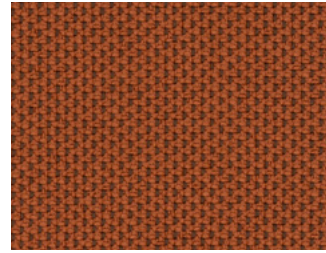
Oceanic
Dune | OOC30



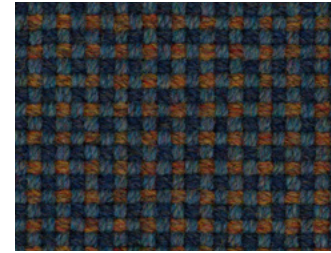
Main Line Twist
Fibre | MLT05



Yoredale
Marsden | UDA35



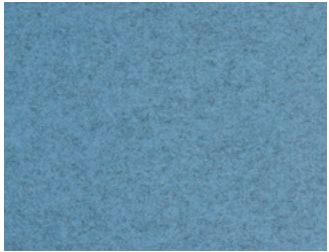
RePlay
Roll | REP18



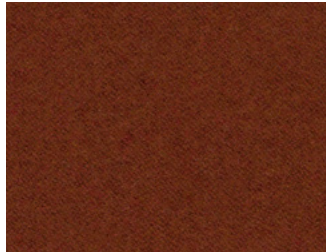
ReSKU 2.0
Resource | RES18



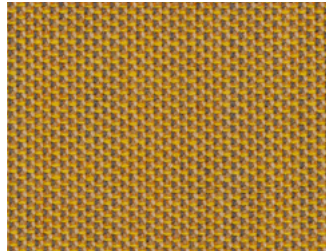
Blazer
Wesley | CUZ82



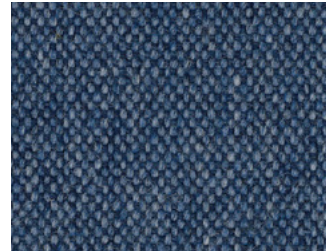
Blazer
Norland | CUZ4J



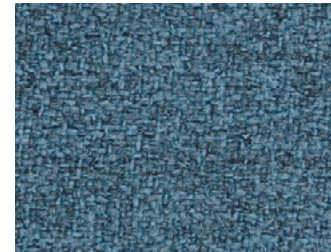
Synergy
Cordial | LDS78



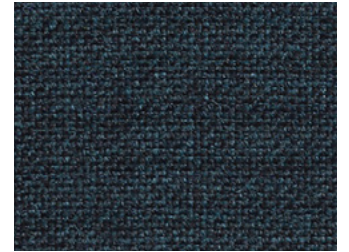
Penta
Glow | PEN19



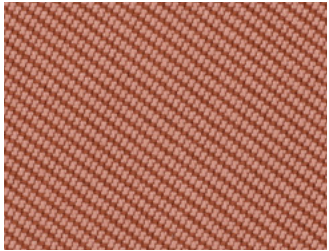
Main Line Flax
Clapham | MLF49



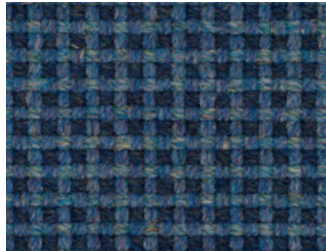
X2
Value | AK006



Sumi
Chiba | SUR08



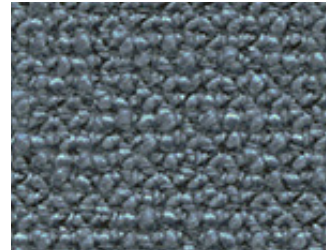
Oceanic
Starfish | OOC27



ReSKU 2.0
Rewind | RES16



Blazer
Newcastle | CUZ1W



Yoredale
Burnsall | UDA22



Penta
Saturation | PEN06



Hemp
Gorse | HWP03

Fabric Selections

Mercurial

1. **Yoredale**
Grassington | UDA27
2. **RePlay**
Joy | REP07
3. **Blazer Lite**
Admire | LTH1C
4. **X2**
Ratio | AK001
5. **RePlay**
Cheer | REP08
6. **ReSKU 2.0**
Rework | RES14
7. **Main Line Flax**
Westminster | MLF22
8. **Penta**
Purity | PEN23
9. **RePlay**
Handstand | REP09
10. **Main Line Flax**
Hampstead | MLF53
11. **Penta**
Spectral | PEN09
12. **Yoredale**
Ribble | UDA17

Renewal

1. **Main Line Flax**
Upminster | MLF20
2. **Main Line Flax**
Kensington | MLF07
3. **Yoredale**
Wharfe | UDA18
4. **Hemp**
Acre | HWP19
5. **ReSKU 2.0**
Reinvent | RES12
6. **RePlay**
Freestyle | REP11
7. **Yoredale**
Bronte | UDA28
8. **ReSKU 2.0**
Recycle | RES10
9. **Penta**
Goethe | PEN11
10. **Yoredale**
Gayle | UDA08
11. **X2**
Equation | AK004
12. **Blazer**
Grantham | CUZ4E

Indulgent

1. **Craggan Flax**
Wold | CRA15
2. **Yoredale**
Skipton | UDA37
3. **Yoredale**
Swaledale | UDA38
4. **X2**
Add | AK012
5. **Synergy**
Amiable | LDS79
6. **X2**
Total | AK040
7. **Main Line Flax**
Barking | MLF45
8. **Yoredale**
Walden | UDA13
9. **Blazer**
Warwick | CUZ4L
10. **Yoredale**
Kettlewell | UDA33
11. **Penta**
Marble | PEN29
12. **Sumi**
Narita | SUR13

Renaissance

1. **Blazer**
Dunalk | CUZ4D
2. **Yoredale**
Thoraby | UDA06
3. **X2**
Sum | AK039
4. **Blazer Lite**
Compassion | LTH1A
5. **Rivet**
Copper | EGL14
6. **Main Line Flax**
Pinner | MLF60
7. **Yoredale**
Horton | UDA30
8. **Main Line Twist**
Ply | MLT10
9. **Monochrome Sett**
Sett #3 | MLC02
10. **Monochrome Sett**
Sett #6 | MLH01
11. **Main Line Flax**
Morden | MLF12
12. **Yoredale**
Gordale | UDA29

Constructive

1. **Penta**
Glow | PEN19
2. **X2**
Algorithm | AK037
3. **RePlay**
Roll | REP18
4. **Synergy**
Cordial | LDS78
5. **Blazer**
Norland | CUZ4J
6. **X2**
Value | AK006
7. **Yoredale**
Burnsall | UDA22
8. **Hemp**
Fallow | HWP28
9. **ReSKU 2.0**
Resource | RES18
10. **Blazer**
Newcastle | CUZ1W
11. **Sumi**
Chiba | SUR08

camira

camirafabrics.com