



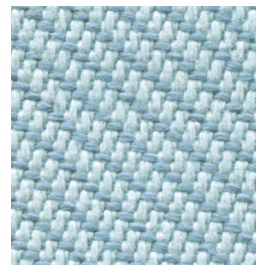
## Every year, 12 million tonnes of plastic enters our oceans

---

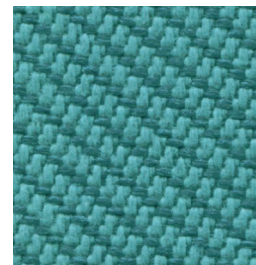
Once there, its effects are felt throughout the eco-system - responsible for harming over 800 species of marine life.



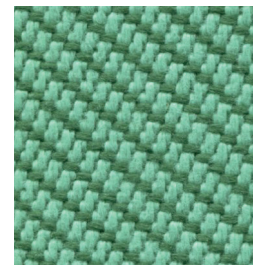
**Oceanic**  
Neptune, OOC11



**Oceanic**  
Gulf, OOC15



**Oceanic**  
Jetsam, OOC02



**Oceanic**  
Sea, OOC04

## Each metre of Oceanic contains the equivalent of 26 plastic bottles

---

Woven entirely from recycled plastic dredged from the sea and rescued from the land, Oceanic is a fabric born of the SEAQUAL Initiative to achieve a waste free environment.





## Join Us Online

Use your phone camera to scan and explore Oceanic  
(we have a lot more to show you digitally).

We actively encourage our customers to sign up to the SEAQUAL  
Initiative when selling furniture upholstered in Oceanic.

### SEAQUAL

Find out more at <https://licensees.seaqual.org/>

[www.camirafabrics.com/oceanic](http://www.camirafabrics.com/oceanic)  
[#seasickofplastic](https://twitter.com/seasickofplastic)



All statistical reference sources can be found at [www.camirafabrics.com/oceanic](http://www.camirafabrics.com/oceanic)

# Seasick of plastic?

Explore Oceanic



**camira**