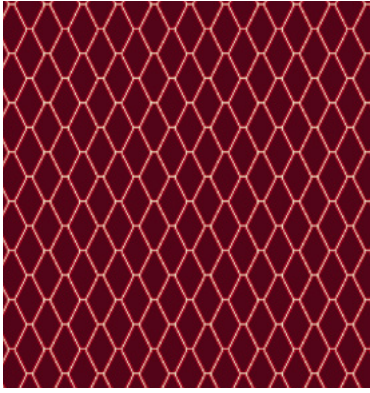


Aura: 2.0

Aura 2.0 is a beautiful, wool rich fabric with intricate detailing which adds interest and opulence to motorcoach interiors. Perfectly paired with our vinyl fabric, Vita, Aura 2.0's exquisite geometric pattern and crinkle yarn creates a three-dimensional, contemporary 'limousine' look and feel. Comfortable, high performing, easy to maintain and versatile, Aura 2.0 is available in six new designs, across four colorways which can be customized to suit every style of transport interior.

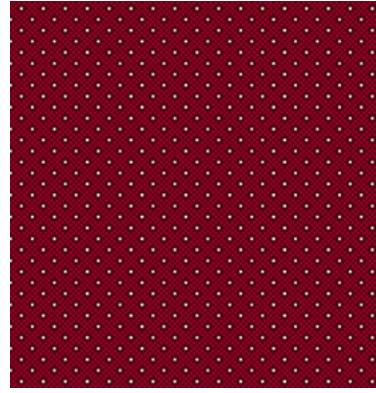
camira



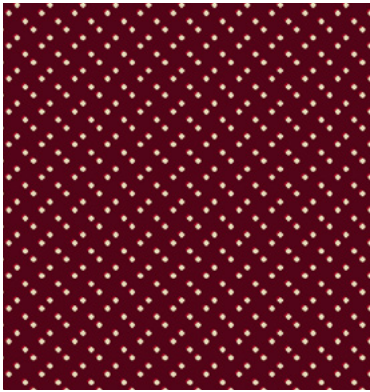
CEN324



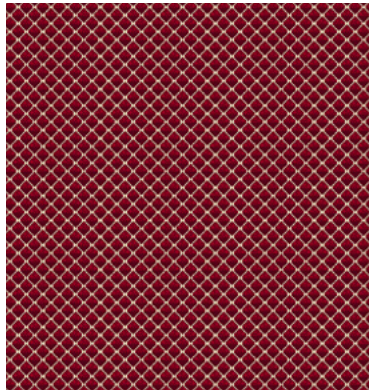
CEM324



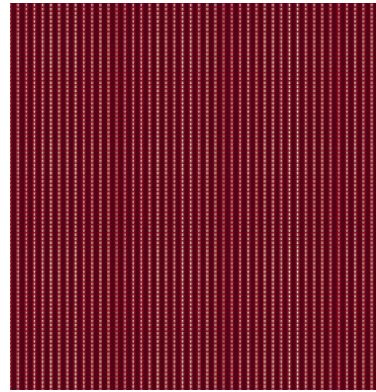
CEP324



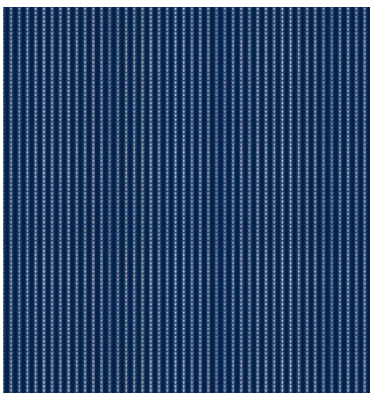
CEL324



CEQ324



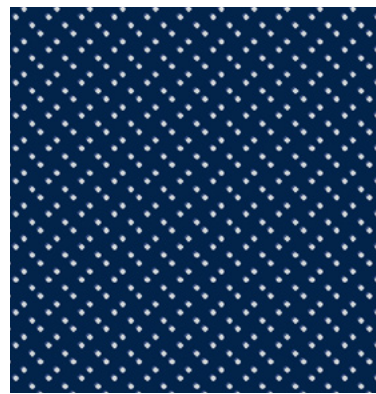
CEK324



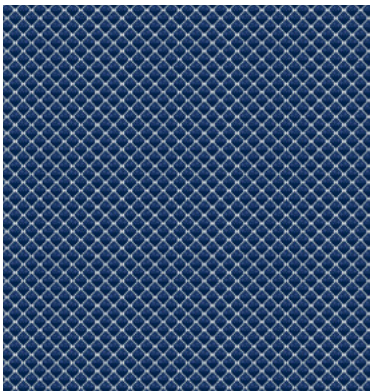
CEKC14



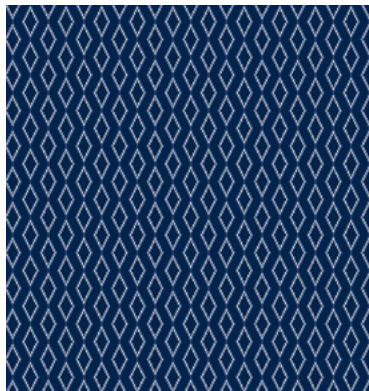
CEPC14



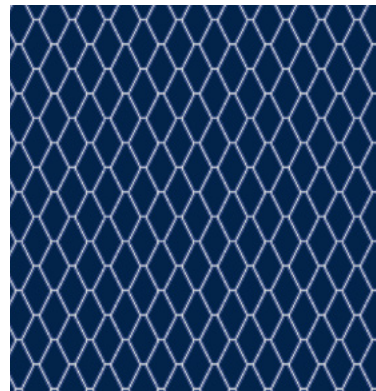
CELC14



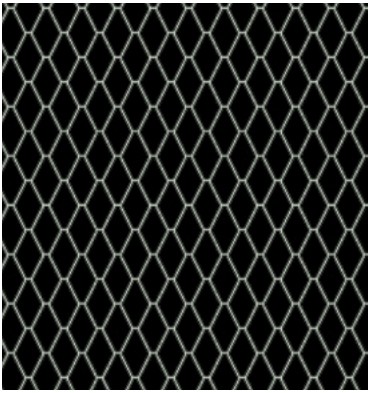
CEQC14



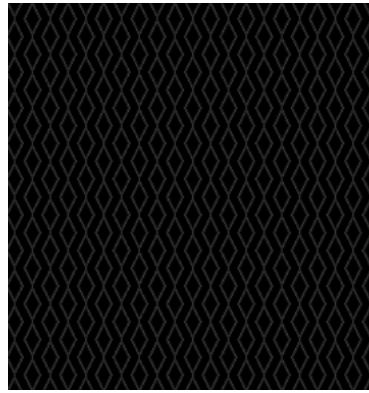
CEMC14



CENC14



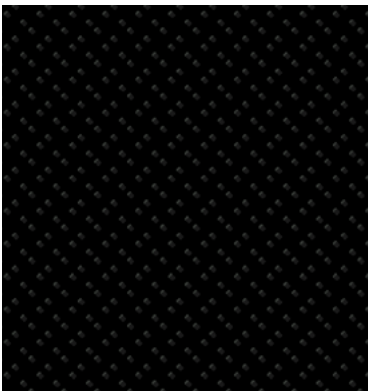
CENG10



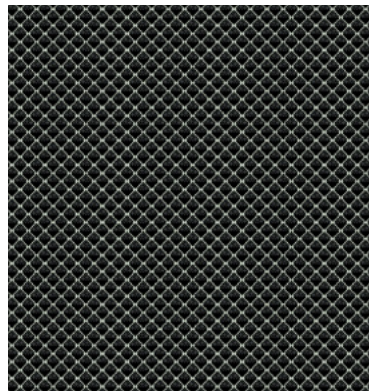
CEMG09



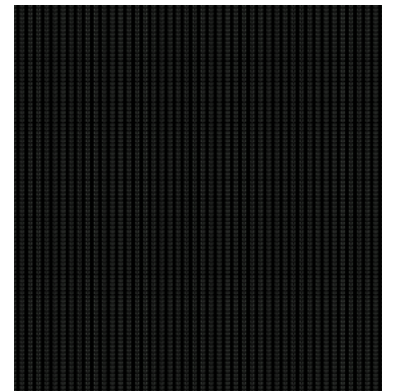
CEPG10



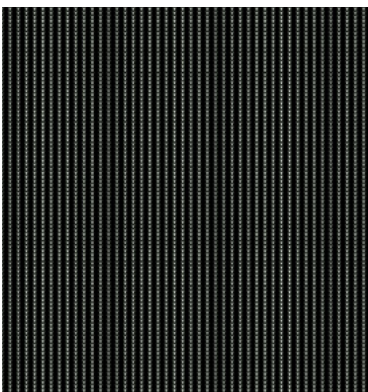
CELG09



CEQG10



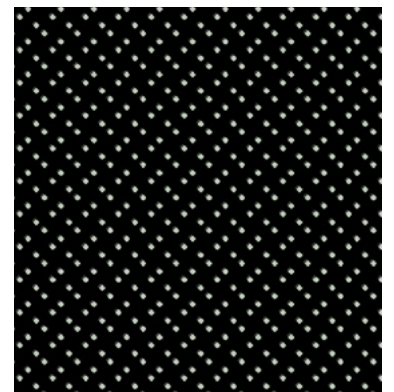
CEKG09



CEKG10



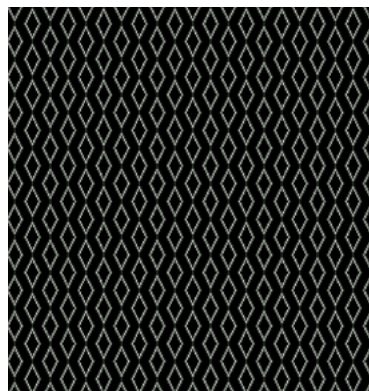
CEPG09



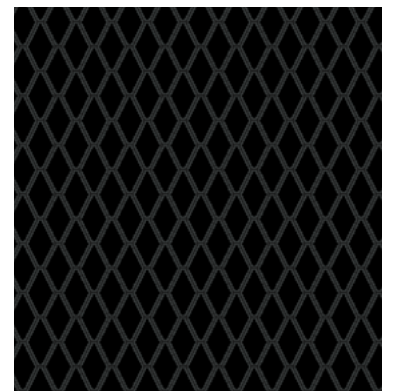
CELG10



CEQG09



CEMG10



CENG09



Transport
seating



Year guarantee

Technical information

EN

Composition

Pile: 70% Wool, 18% Polyester, 12% Nylon
Ground: 100% Cotton

Width

59 inches minimum

Weight

24^{1/4} oz/sq yd ±5% (39^{3/4} oz/running yd ±5%)

Thickness

0.165 inches ±0.012 inches (BS 4051) (ISO 1765)

Abrasion Resistance

≥80,000 Martindale cycles (ISO 12947-2)

Flammability*

FMVSS 302

With UIC (85) Backcoat:

DOCKET 90

Note: Flammability performance is dependent on components used; full details are listed within our certificates. Customers must ensure their complete furniture meets the necessary standards.

Light Fastness

6 (ISO 105 B02)

Fastness to Rubbing

Wet: 4, Dry: 4 (ISO 105 - X12)

Cleaning

Vacuum regularly. Wipe clean with a damp cloth or shampoo using proprietary upholstery shampoo.

*Flammability performance is dependent on components used. FR post-treatments may be required to meet specific standards. Further information can be provided on request. Post treatments may change the technical performance and appearance of a product.

Batch to batch variations in shade may occur within commercial tolerances.

The Unregistered Design Rights and the Copyright in all designs are the exclusive property of Camira Fabrics Limited.

F

Composition

Surface: 70% Laine, 18% Polyester, 12% Nylon
Couche Inférieure: 100% Cotton

Largeur

59 pouces minimum

Poids

24^{1/4} oz/sq yd ±5% (39^{3/4} oz/lin.yd ±5%)

Epaisseur

0.165 pouces ±0.012 pouces (BS 4051) (ISO 1765)

Résistance à l'abrasion

≥80,000 Martindale tours (ISO 12947-2)

Flammabilité*

FMVSS 302

Avec UIC (85) Backcoat:

DOCKET 90

Notez: Les performances d'inflammabilité dépendent des composants utilisés; tous les détails sont énumérés dans nos certificats. Les clients doivent s'assurer que leur mobilier complet répond aux normes nécessaires.

Solidité à la Lumière

6 (ISO 105 B02)

Solidité au frottement

Mouillé: 4, Sec: 4 (ISO 105 X12)

Nettoyage

Aspirer régulièrement. Essuyer avec une étoffe humide ou nettoyer à l'aide d'un produit approprié pour tissus d'ameublement.

*La performance d'inflammabilité dépend des composantes utilisées. Les traitements postérieurs FR peuvent être nécessaires pour respecter des normes spécifiques. Plus amples renseignements peuvent être fournis sur demande. Les traitements supplémentaires post-production peuvent altérer les performances techniques et l'apparence d'un produit.

Variations de coloris d'un bain à un autre peuvent se manifester.

Les Droits de Conception non-enregistrés et les droits d'auteur de tous les motifs sont la propriété exclusive de Camira Fabrics Limited.

ES

Composición

Superficie: 70% Lana, 18% Poliéster, 12% Nylon
Superficie: 100% Cotton

Ancho

59 pulgadas mínimo

Peso

24^{1/4} oz/sq yd ±5% (39^{3/4} oz/lin.y ±5%)

Espesor

0.165 pulgadas ±0.012 pulgadas (BS 4051) (ISO 1765)

Resistencia a la abrasión

≥80,000 Martindale ciclos (ISO 12947-2)

Inflamabilidad*

FMVSS 302

Con UIC (85) Backcoat:

DOCKET 90

Nota: El rendimiento de la Inflammabilidad depende de los componentes usados; todos los detalles se enumeran en nuestros certificados. Los clientes deben asegurarse de que todos sus muebles cumplan con los estándares necesarios.

Solidez a la Luz

6 (ISO 105 B02)

Solidez al rozamiento

Húmedo: 4, Seco: 4 (ISO 105 X12)

Limpieza

Limpiar con aspiradora frecuentemente. Bien lavar con un paño húmedo o con un champú apropiado para tapicería.

*El rendimiento de la inflamabilidad depende de los componentes utilizados. Post-tratamientos de FR pueden ser requeridos para cumplir con estándares específicos. Más información se puede proporcionar a petición. Los tratamientos adicionales pueden cambiar el rendimiento técnico y la apariencia de un producto.

Cada tintada puede tener pequeñas variaciones en el tono dentro de las tolerancias comerciales aceptadas.

Los derechos sobre los diseños no registrados y los derechos de autor en todos los diseños son propiedad exclusiva de Camira Fabrics Limited.