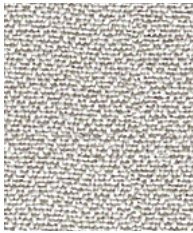


Lucia CS

camira

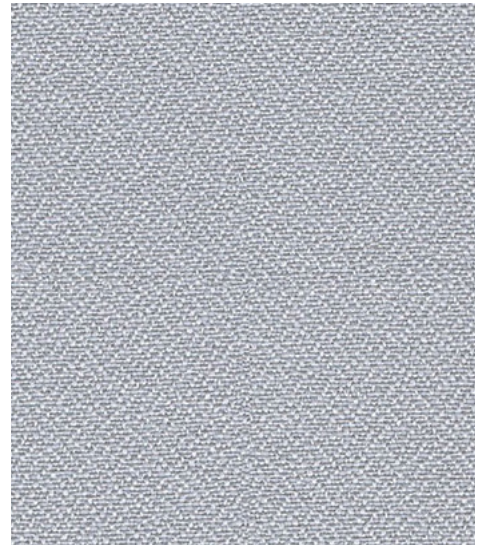
Photographic fabric scans are not color accurate. Always request actual fabric samples before ordering.



Varadero
LC434



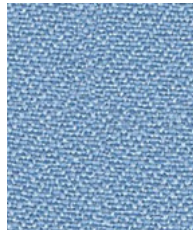
Adobo
LC165



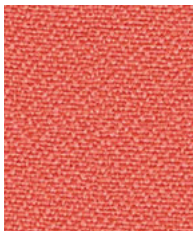
Rum
LC173



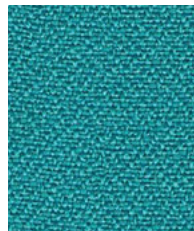
Aruba
LC108



Medan
LC422



Bima
LC425



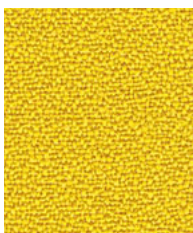
Depok
LC421



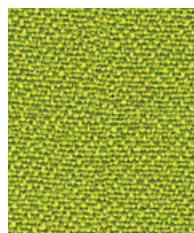
Honduras
LC455



Slip
LC094



Kota
LC415



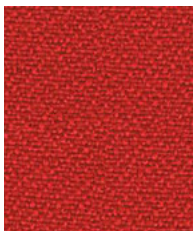
Tenom
LC419



Blanquilla
LC456



Blizzard
LC081



Panama
LC079



Roques
LC433



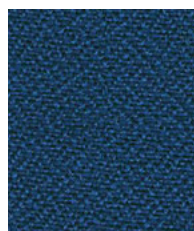
Palu
LC414



Revive
LC182



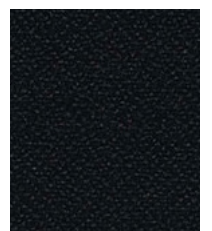
Negril
LC175



Makili
LC424



Costa
LC026



Havana
LC009



Curtains



Ancillary trim



Year guarantee

Lucia CS has been engineered from 100% Trevira CS yarn making it an inherently flame retardant fabric suitable for curtaining in buses and coaches. We have created a sophisticated colour palette that effortlessly coordinates with other fabrics within the transport collection.



Technical information

EN

Composition

100% Trevira CS® Flame Retardant Polyester

Width

66 inches minimum

Weight

7^{3/4} oz/sq yd ±5% (14^{3/4} oz/running yd ±5%)

Flammability

FMVSS 302
NFPA 130
DOCKET 90
BS 5867-2: Type B Curtains & Drapes

Note: Flammability performance is dependent on components used. Our certificates show what substrates have been used in our tests. For composite tests customers must ensure their complete furniture meets the necessary standards.

Light Fastness

6 (BS EN ISO 105 B02)

Fastness to Rubbing

Wet: 4, Dry: 4 (BS EN ISO 105 X12)

Maintenance

Vacuum regularly. Wipe with a damp cloth using soap and water or use proprietary upholstery shampoo. For deeper cleaning use bleach or alcohol. Full details can be found in our cleaning and disinfection guide.

Color Matching

Batch to batch variations in shade may occur within commercial tolerances.

The Unregistered Design Rights and the Copyright in all designs are the exclusive property of Camira Fabrics Limited.

F

Composition

100% Trevira CS® Polyester retardateur de flamme

Largeur

66 pouces minimum

Poids

7^{3/4} oz/sq yd ±5% (14^{3/4} oz/yd.lin ±5%)

Flammabilité

FMVSS 302
NFPA 130
DOCKET 90
BS 5867-2: Type B Curtains & Drapes

Notez: La performance de flammabilité dépend des composantes utilisées. Nos certificats indiquent les substrats utilisés dans nos tests. Pour les tests composites, les clients doivent s'assurer que leurs meubles complets satisfont aux normes nécessaires.

Solidité à la lumière

6 (BS EN ISO 105 B02)

Solidité au frottement

Mouillé: 4, Sec: 4 (BS EN ISO 105 X12)

Nettoyage

Passez l'aspirateur régulièrement. Essayez avec un chiffon humide avec de l'eau et du savon ou utilisez un shampooing pour tissus d'ameublement exclusif. Pour un nettoyage en profondeur, utilisez la javel ou alcool. Vous trouverez tous les détails dans notre guide de nettoyage et de désinfection.

Standardisation des coloris

Variations de coloris d'un bain à un autre peuvent se manifester.

The Unregistered Design Rights and the Copyright in all designs are the exclusive property of Camira Fabrics Limited.

ES

Composición

100% Trevira CS® Polyester resistente al fuego

Ancho

66 pulgadas mínimo

Peso

7^{3/4} oz/sq yd ±5% (14^{3/4} oz/lin.y ±5%)

Inflamabilidad

FMVSS 302
NFPA 130
DOCKET 90
BS 5867-2: Type B Curtains & Drapes

Nota: El rendimiento de la inflamabilidad depende de los componentes usados. Nuestros certificados muestran qué substratos se han usado en nuestros tests. Para tests compuestos nuestros clientes deben asegurar si sus muebles cumplen la normativa al uso.

Solidez a la luz

6 (BS EN ISO 105 B02)

Solidez al rozamiento

Húmedo: 4, Seco: 4 (BS EN ISO 105 X12)

Limpieza

Uso aspirador regularmente. Limpiar con un trapo usando jabón y agua o producto limpieza para tapicerías. Para una limpieza más profunda use lejía o alcohol. Los detalles completos se encuentran en nuestra guía de limpieza y desinfección.

Continuidad de colores

Cada tintada puede tener pequeñas variaciones en el tono dentro de las tolerancias comerciales aceptadas.

The Unregistered Design Rights and the Copyright in all designs are the exclusive property of Camira Fabrics Limited.