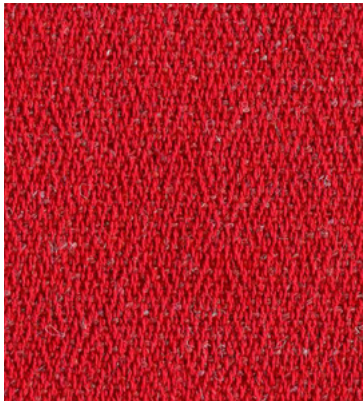


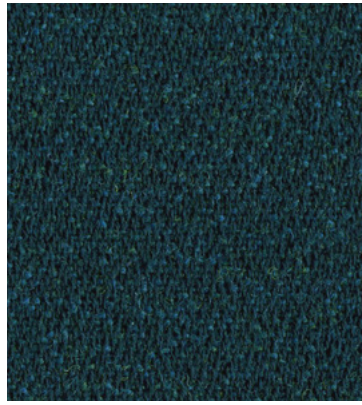
24/7

24/7 is a high endurance fabric for busy spaces that never stop. The tightly woven construction marries style with robust technical performance, including inherent flame retardancy, making it ideal for heavy duty contract applications such as airport departure lounges, student accommodation and call centres.

There are two fabric variants: FYR code is 24/7 Flax for an improved sustainability profile, while WK code is our original 24/7+ range in its two most popular colourways.



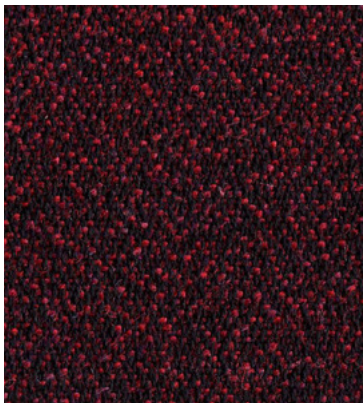
24/7 Flax
Eternity | FYR18



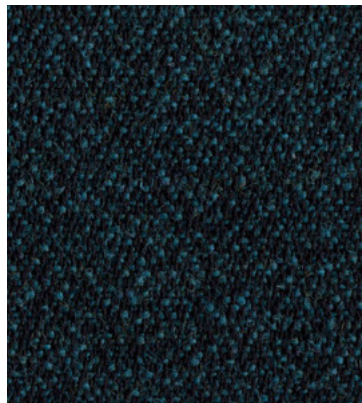
24/7 Flax
Zone | FYR09



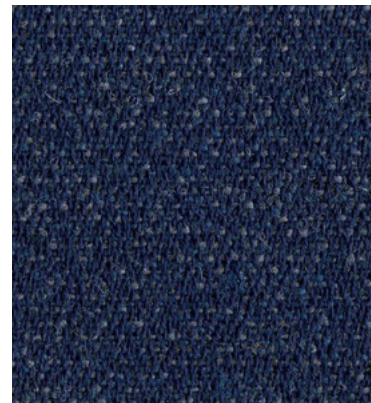
24/7 Flax
Vernal | FYR02



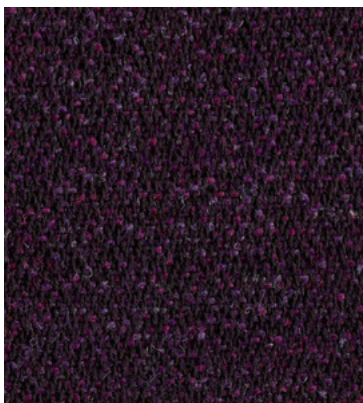
24/7 Flax
Annual | FYR15



24/7 Flax
Future | FYR10



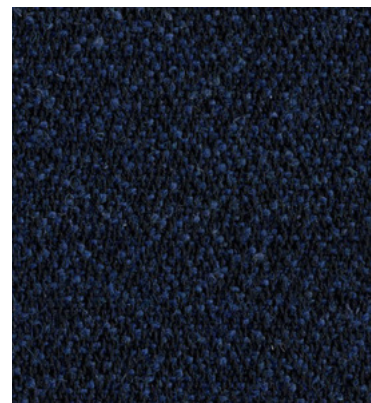
24/7 Flax
Chronology | FYR04



24/7 Flax
Ancient | FYR16

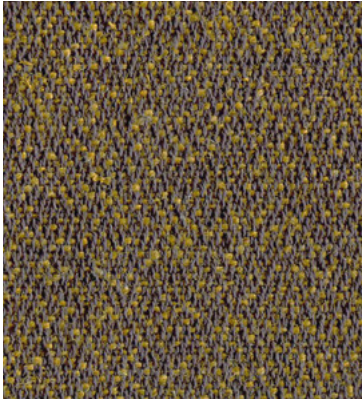


24/7 Flax
Olympiad | FYR05

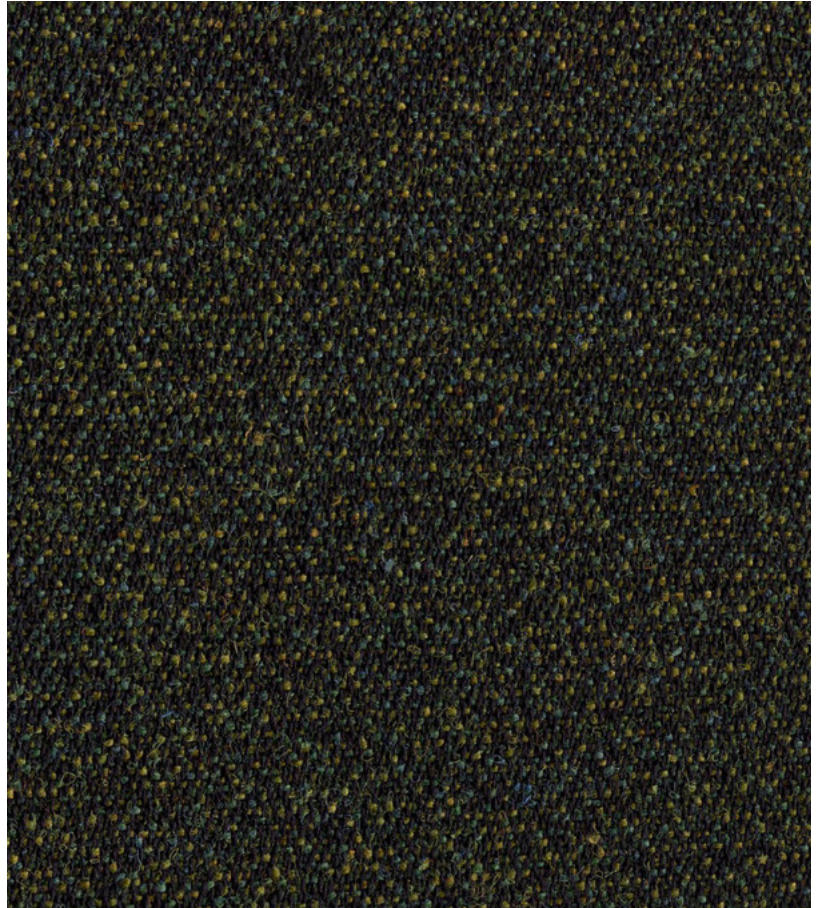


24/7 Flax
Equinox | FYR03

Photographic fabric scans are not colour accurate. Always request actual fabric samples before ordering.



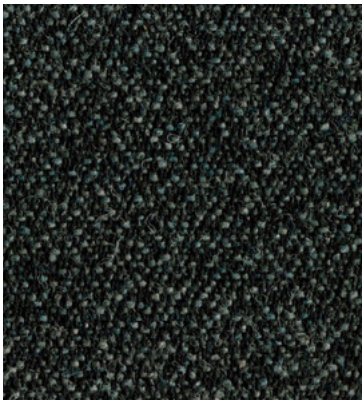
24/7 Flax
Continuance | FYR11



24/7 Flax
Stint | FYR12



24/7 Flax
Shift | FYR17



24/7 Flax
Indiction | FYR06



24/7 Flax
Linearity | FYR20



24/7 Flax
Quarter | FYR19



24/7 Flax
While | FYR21



24/7+
Night | WK012



24/7+
Forever | WK017

24/7



Task seating



Soft seating



Cigarette
& Match



Medium Hazard



IMO FTP Code
(Part 8)



Year guarantee
24 hour use

Technical Information

Composition

24/7 Flax FYR code:

54% Polyamide, 35% Wool, 11% Flax

24/7+ WK code:

50% Polyamide, 33% Wool,
10% Flame Retardant Viscose, 7% Viscose

Environment

Certified to Indoor Advantage™ Gold

Contains wool and bast fibre

Width

140cm minimum

Weight

24/7 Flax FYR code:

390 g/m² ±5% (546 g/lin.m ±5%)

24/7+ WK code:

435g/m² ±5% (610g/lin.m ±5%)

Abrasion Resistance*

Heavy duty / 10 year guarantee

24/7 Flax FYR code:

Independently certified to ≥200,000 Martindale cycles

24/7+ WK code:

Independently certified to ≥400,000 Martindale cycles

Light Fastness

5 (ISO 105 - B02)

Fastness to Rubbing

Wet: 4, Dry: 4 (ISO 105 - X12)

Cleaning

Vacuum regularly. Wipe with a damp cloth using a proprietary upholstery shampoo/soap. For deeper cleaning use steam or professionally dry clean. Full details can be found in our cleaning and disinfection guide.

Flammability

24/7 Flax FYR & 24/7+ WK codes:

EN 1021 - 1 (cigarette)

EN 1021 - 2 (match)

BS 7176 Low Hazard

BS 5852 Ignition Source 5

BS 7176 Medium Hazard

UNI 9175 Classe 1 IM

IMO FTP Code (Part 8)

24/7 Flax FYR code:

California Technical Bulletin 117

NFPA 260 + UFAC Class 1

NF D 60-013

Note: Flammability performance is dependent on components used; full details are listed within our certificates. Customers ensure their complete furniture meets the necessary standards.

24/7 Flax FYR code:

*Results from abrasion testing are highly variable and are therefore not a reliable indicator of the wear performance of the fabric. All independent certification is supported by a 10 year durability guarantee. Internally we specify this product at >200,000 cycles which we believe is realistic for repeatability of testing.

24/7+ WK code:

*Results from abrasion testing are highly variable and are therefore not a reliable indicator of the wear performance of the fabric. All independent certification is supported by a 10 year durability guarantee. Internally we specify this product at >400,000 cycles which we believe is realistic for repeatability of testing.

The stated technical and environmental performance of a fabric may be affected by the post treatment applied. Product guarantees for the post treatment of fabrics undertaken by Camira are guaranteed for 5 years. Please note that seam performance is dependent on seam construction, needle and thread type. We recommend that appropriate sewing advice be taken. Batch to batch shade variations may occur within commercial tolerances. We reserve the right to alter technical specifications without notice. The Unregistered Design Rights and the Copyright in all designs are the exclusive property of Camira Fabrics Limited.

www.camirafabrics.com



Scan für technische Daten in Deutsch
Scanner pour la spécification en français
Escaneen para obtener las especificaciones en español

FYR/WK (TSR9/10) 1024 IJ



Technical information

UK

Composition

24/7 Flax FYR code:

54% Polyamide, 35% Wool, 11% Flax

24/7+ WK code:

50% Polyamide, 33% Wool, 10% Flame Retardant Viscose, 7% Viscose

Environment

Certified to Indoor Advantage™ Gold

Contains wool and bast fibre

Width

140cm minimum

Weight

24/7 Flax FYR code:

390 g/m² ±5% (546 g/lin.m ±5%)

24/7+ WK code:

435g/m² ±5% (610g/lin.m ±5%)

Abrasion Resistance*

Heavy duty / 10 year guarantee

24/7 Flax FYR code:

Independently certified to ≥200,000 Martindale cycles

24/7+ WK code:

Independently certified to ≥400,000 Martindale cycles

Flammability

24/7 Flax FYR & 24/7+ WK codes:

EN 1021 - 1 (cigarette)

EN 1021 - 2 (match)

BS 7176 Low Hazard

BS 5852 Ignition Source 5

BS 7176 Medium Hazard

UNI 9175 Classe 1 IM

IMO FTP Code (Part 8)

24/7 Flax FYR code:

California Technical Bulletin 117

NFPA 260 + UFAC Class 1

NF D 60-013

Note: Flammability performance is dependent on components used; full details are listed within our certificates. Customers must ensure their complete furniture meets the necessary standards.

Light Fastness

5 (ISO 105 - B02)

Fastness to Rubbing

Wet: 4, Dry: 4 (ISO 105 - X12)

Cleaning

Vacuum regularly. Wipe with a damp cloth using a proprietary upholstery shampoo/soap. For deeper cleaning use steam or professionally dry clean. Full details can be found in our cleaning and disinfection guide.

The stated technical and environmental performance of a fabric may be affected by the post treatment applied. Product guarantees for the post treatment of fabrics undertaken by Camira are guaranteed for 5 years.

Please note that seam performance is dependent on seam construction, needle and thread type. We recommend that appropriate sewing advice be taken.

Batch to batch shade variations may occur within commercial tolerances. We reserve the right to alter technical specifications without notice. The Unregistered Design Rights and the Copyright in all designs are the exclusive property of Camira Fabrics Limited.

24/7 Flax FYR code:

*Results from abrasion testing are highly variable and are therefore not a reliable indicator of the wear performance of the fabric. All independent certification is supported by a 10 year durability guarantee. Internally we specify this product at >200,000 cycles which we believe is realistic for repeatability of testing.

24/7+ WK code:

*Results from abrasion testing are highly variable and are therefore not a reliable indicator of the wear performance of the fabric. All independent certification is supported by a 10 year durability guarantee. Internally we specify this product at >400,000 cycles which we believe is realistic for repeatability of testing.

D

Zusammensetzung

24/7 Flax FYR code:

54% Polyamid, 35% Schurwolle, 11% Flachs

24/7+ WK code:

50% Polyamid, 33% Wolle, 10% FR Viskose, 7% Viskose

Umweltfreundlich

Nach Zertifikat Indoor Advantage™ Gold

Enthält Wolle und Bastfasern

Breite

140cm nutzbare Breite

Gewicht

24/7 Flax FYR code:

390 g/m² ±5% (546 g/lfd.m ±5%)

24/7+ WK code:

435g/m² ±5% (610g/lfd.m ±5%)

Scheuerfestigkeit*

Schwerer Objekteinsatz / 10 Jahre Garantie

24/7 Flax FYR code:

Extern zertifiziert mit ≥200,000 Scheuertouren Martindale

24/7+ WK code:

Extern zertifiziert mit ≥400,000 Scheuertouren Martindale

Feuersicherung

24/7 Flax FYR & 24/7+ WK codes:

EN 1021 - 1 (Zigarettestest)

EN 1021 - 2 (Streichholztest)

BS 7176 Low Hazard

BS 5852 Ignition Source 5

BS 7176 Medium Hazard

UNI 9175 Classe 1 IM

IMO FTP Code (Part 8)

24/7 Flax FYR code:

California Technical Bulletin 117

NFPA 260 + UFAC Class 1

NF D 60-013

Bemerkung: Die Entflammbarkeit hängt von den verwendeten Komponenten ab ; die Details sind in unseren Zertifikaten beschrieben. Der Kunde muss sicherstellen, dass das gesamte Möbelstück die erforderlichen Normen erfüllt.

Lichtechtheit

5 (ISO 105 - B02)

Reibecktheit

Nass: 4, Trocken: 4 (ISO 105 - X12)

Reinigung

Regelmässig absaugen. Mit einem feuchten Tuch abwischen oder mit einem geeigneten Polstershampoo behandeln. Für eine Grundreinigung bitte Dampf oder professionelle Trockenreinigung verwenden. Weitere Informationen finden Sie in unserem Leitfaden zur Reinigung und Pflege.

Die angegebene technische und ökologische Eigenschaft eines Stoffes kann durch die nachträgliche Ausrüstung beeinflusst werden. Die Garantie für die nachträgliche Ausrüstung von Stoffen durch Camira, beträgt 5 Jahre.

Bitte beachten Sie, dass die Nahtfestigkeit von der Nahtkonstruktion, der Nadel und dem Fadentyp abhängt. Wir empfehlen, eine entsprechende Näh-Beratung in Anspruch zu nehmen.

Handelsübliche Farbabweichungen von Produktionslosen können auftreten. Wir behalten uns das Recht vor, technische Spezifikationen ohne Vorankündigung zu ändern. Nicht eingetragene Designrechte und das Urheberrecht an allen Designs sind das exklusive Eigentum von Camira Fabrics Limited.

24/7 Flax FYR code:

*Ergebnisse von Scheuerfestigkeitsprüfungen sind variabel und kein zuverlässiger Indikator für die Verschleißleistung des Stoffes. Alle neutralen Zertifizierungen werden durch eine 10-Jahres-Garantie unterstützt. Intern spezifizieren wir dieses Produkt mit >200.000 Scheuertouren, um die Wiederholbarkeit der Testergebnisse zu gewährleisten.

24/7+ WK code:

*Ergebnisse von Scheuerfestigkeitsprüfungen sind variabel und kein zuverlässiger Indikator für die Verschleißleistung des Stoffes. Alle neutralen Zertifizierungen werden durch eine 10-Jahres-Garantie unterstützt. Intern spezifizieren wir dieses Produkt mit >400.000 Scheuertouren, um die Wiederholbarkeit der Testergebnisse zu gewährleisten.

