

Sumi

A worsted wool fabric for upholstery, panels, and curtains & drapes.

Available in 27 Colourways



camira



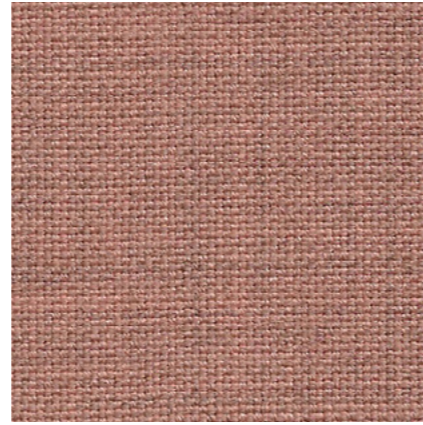
Sumi, impeccable simplicity

A delicate worsted wool woven using fine marl yarns, Sumi blends the influence of Japan with muted Scandi aesthetics to create an understated, elegantly refined fabric.

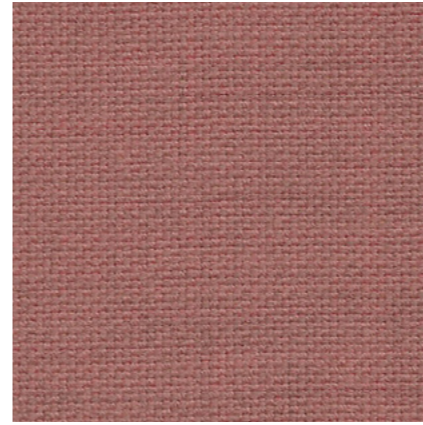
With a palette encompassing grounding neutrals, delicate pastels, and deeply saturated shades, this book illustrates a selection of inspirational Sumi colour schemes to bring timeless beauty to commercial and residential interiors.



Zen SUR04



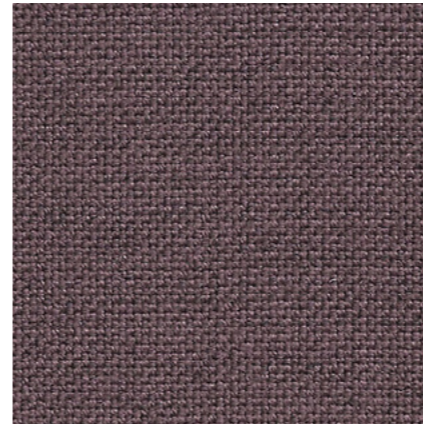
Narita SUR13



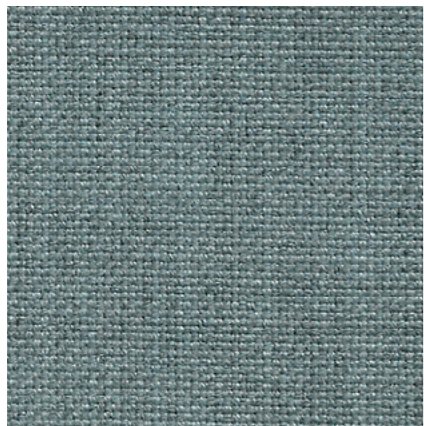
Yabu SUR20



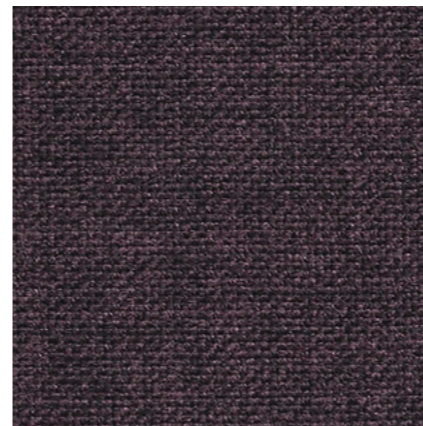
Tang SUR01



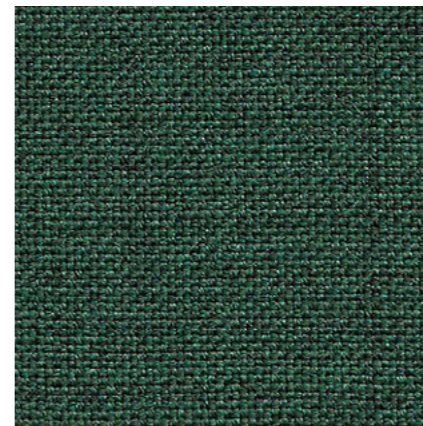
Nagoya SUR24



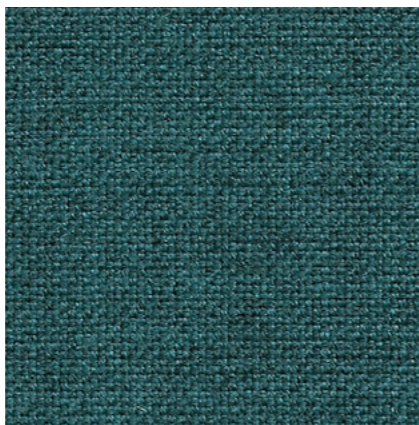
Tamba SUR19



Otaru SUR15



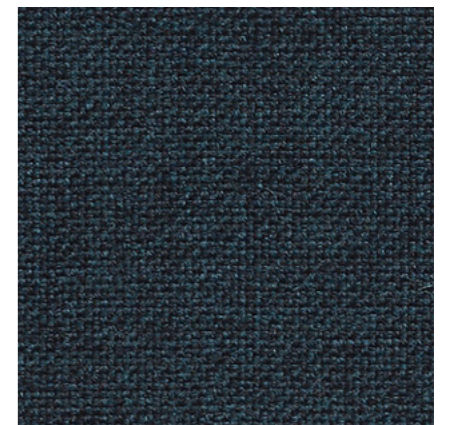
Seto SUR18



Daisen SUR09



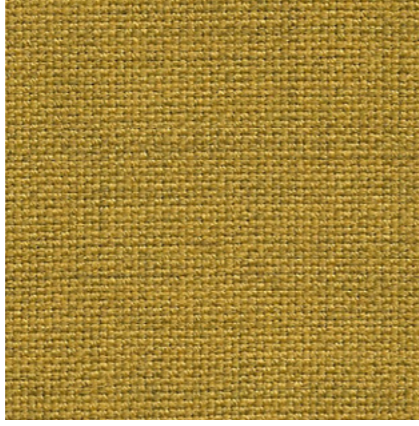
Handa SUR10



Chiba SUR08



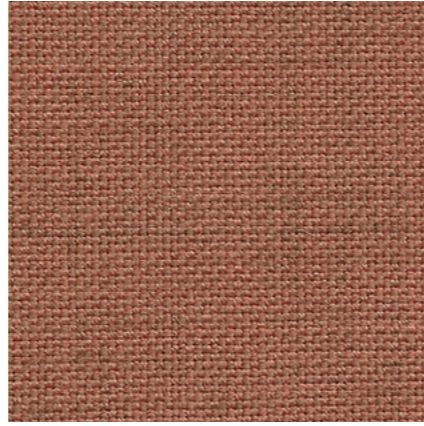
Noda SUR14



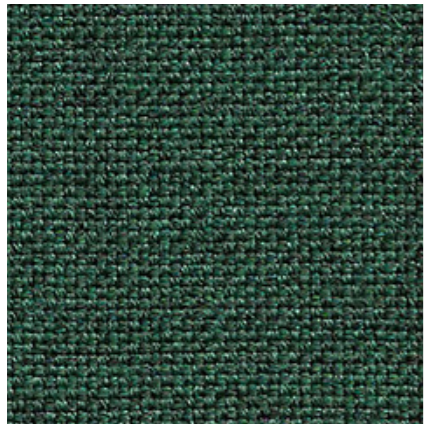
Tamura SUR22



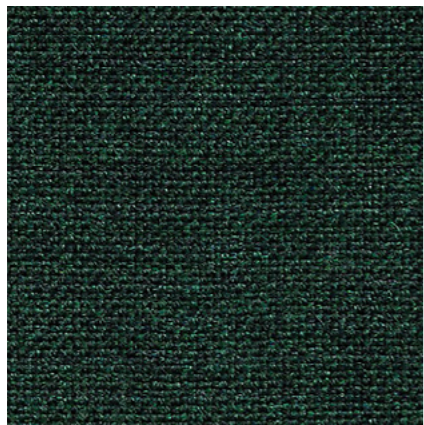
Yokote SUR27



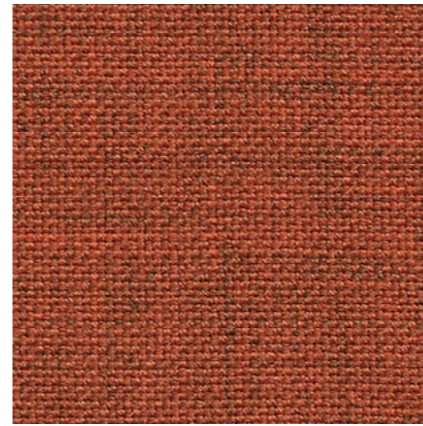
Mito SUR21



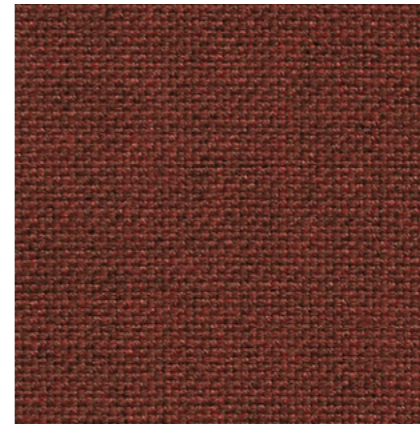
Seto SUR18



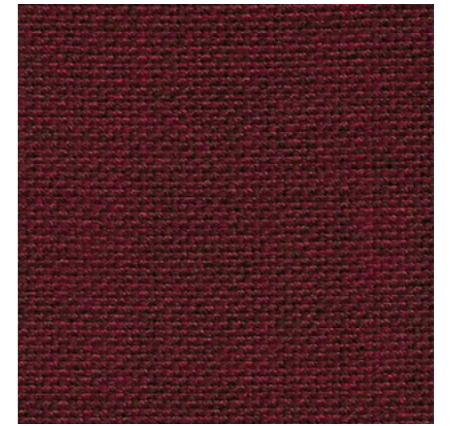
Kama SUR16



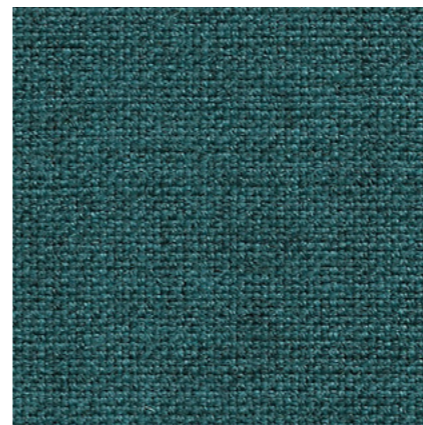
Tono SUR23



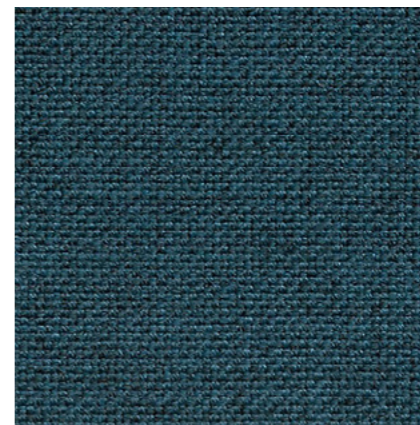
Mobara SUR12



Abiko SUR07



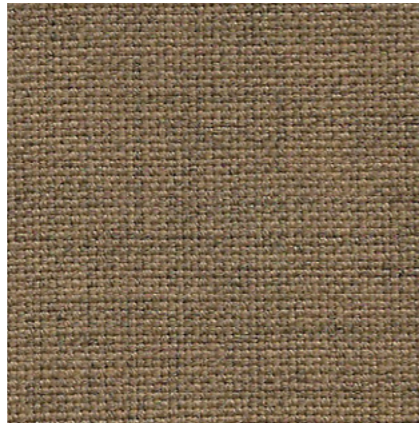
Daisen SUR09



Uto SUR25



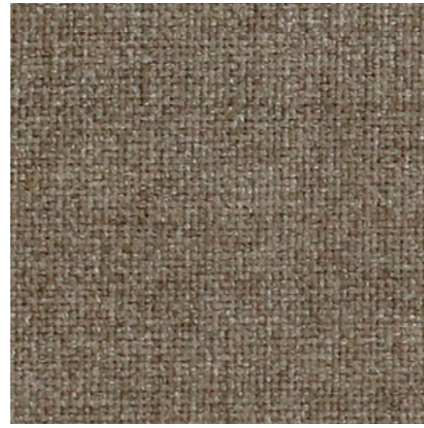
Zen SUR04



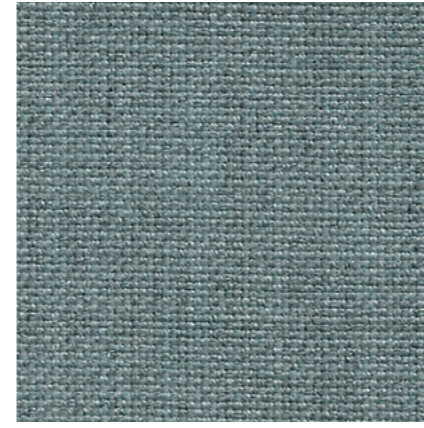
Miki SUR11



Muso SUR05



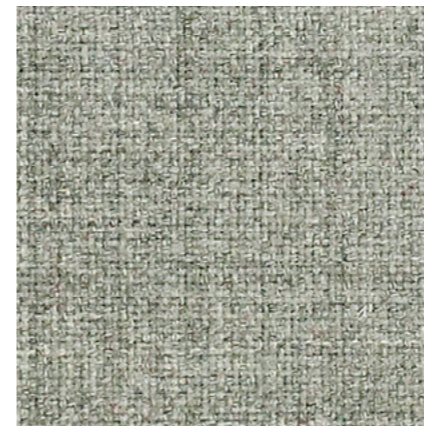
Osaka SUR06



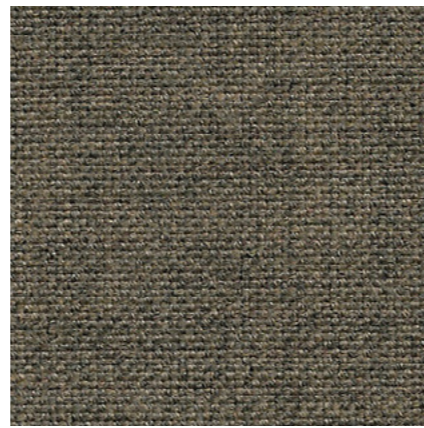
Tamba SUR19



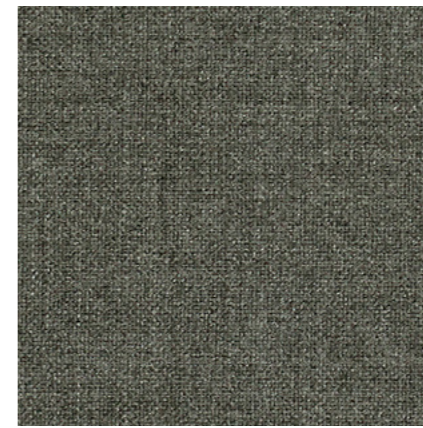
Tang SUR01



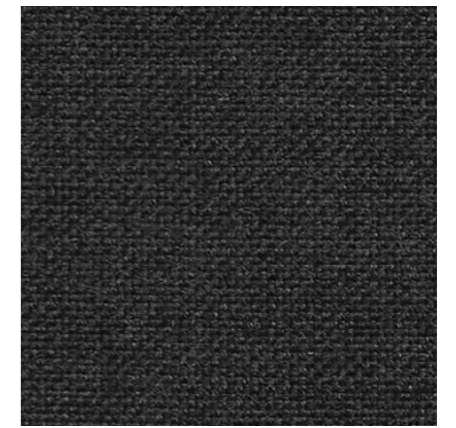
Tokyo SUR02



Zushi SUR26

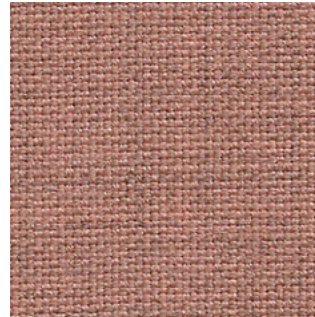


Kobe SUR03

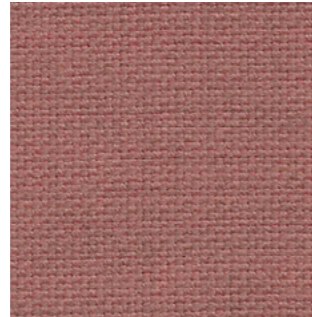


Nara SUR17

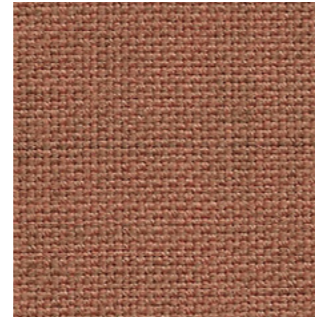
Colour palette



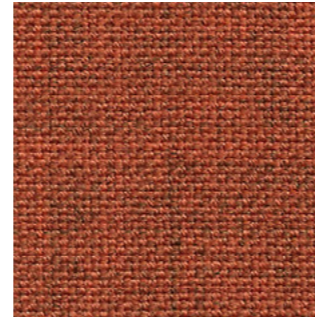
Narita
SUR13



Yabu
SUR20



Mito
SUR21



Tono
SUR23



Zen
SUR04



Musō
SUR05



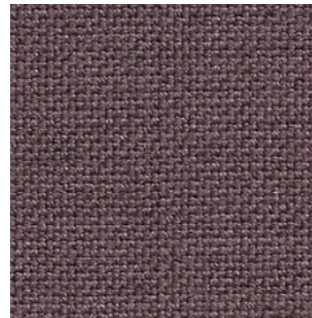
Osaka
SUR06



Miki
SUR11



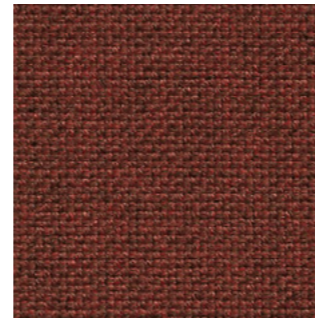
Otaru
SUR15



Nagoya
SUR24



Abiko
SUR07



Mobara
SUR12



Tang
SUR01



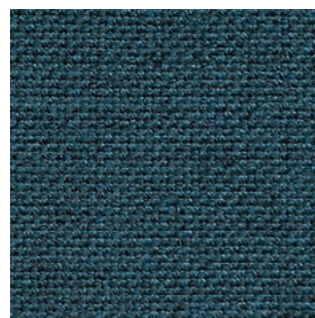
Tokyo
SUR02



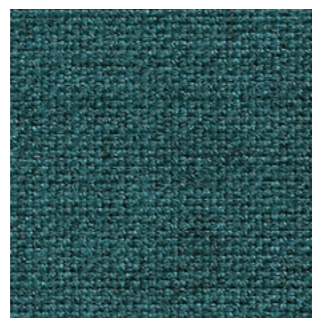
Kobe
SUR03



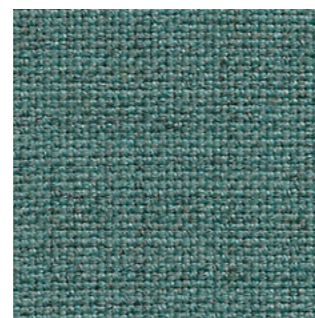
Zushi
SUR26



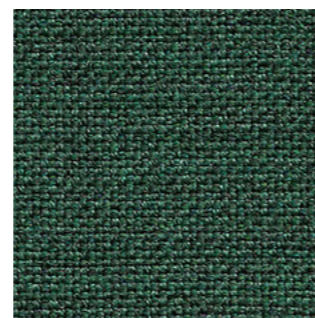
Uto
SUR25



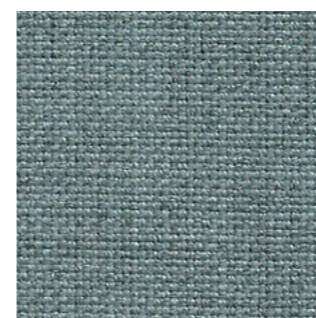
Daisen
SUR09



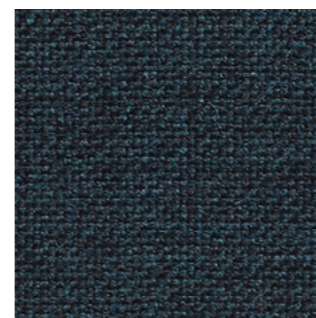
Handa
SUR10



Seto
SUR18



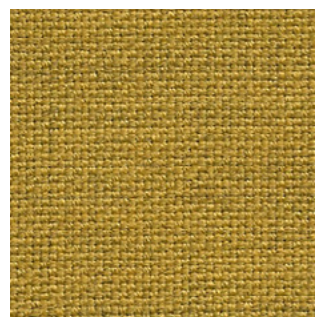
Tamba
SUR19



Chiba
SUR08



Nara
SUR17



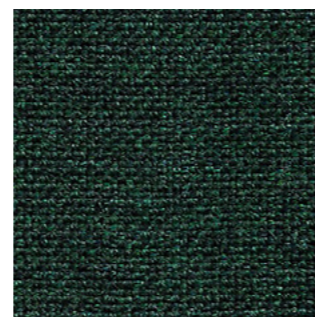
Tamura
SUR22



Noda
SUR14



Yokote
SUR27

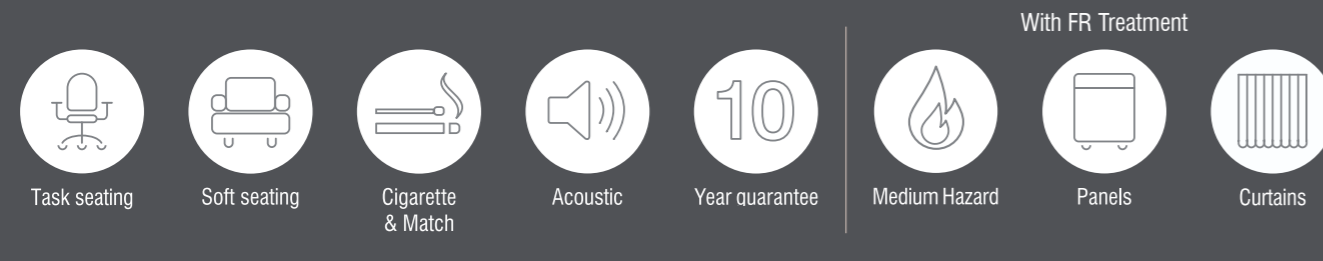


Kama
SUR16

Specification

Composition

90% Wool, 10% Polyamide



Understated in its elegance and refined in its colouration, Sumi is a fabric which exudes serenity and style. Woven from worsted wool using fine marl yarns, this natural textile embraces a purity of composition and an impeccably simple aesthetic which makes it both without age, yet achingly current. Evoking the ancient Japanese painting technique from which it takes its name, Sumi's perfectly considered palette of organic, refined hues are made to bring timeless beauty to commercial and residential interiors. Designed to work in harmony with the striated grid of Kyoto, a selection of Sumi's neutral colourways have pairings in this sister range.

Technical Information

Sumi

Industry Application

Workplace, Education, Hospitality & Lesiure, Home

Composition

90% Wool, 10% Polyamide

Environment

Certified to the EU Ecolabel
Certified to Indoor Advantage™ Gold

Width

138 cm minimum

Weight

350g/m² ±7.5% (483g/lin.m ±7.5%)

Abrasion Resistance

Heavy duty / 10 year guarantee
Independently certified to ≥200,000 Martindale cycles

Flammability

EN 1021 - 1 (cigarette)
EN 1021 - 2 (match)
BS 7176 Low Hazard
NF D 60-013
UNI 9175 Classe 1 IM
IMO FTP Code (Part 8)
The Furniture and Furnishing (Fire Safety) Regulations
1988 (UK domestic cigarette and match)

Optional: Please specify when ordering:

BS 5852 Ignition Source 5 with EnviroFlam5
BS 7176 Medium Hazard with EnviroFlam5
BS 476 Part 7 Class 1 (Adhered) when FR treated
BS 476 Part 6 Class 0 (Adhered) when FR treated
EN 13501-1 Adhered Class B, s1, d0 when FR treated
BS 5867-2: Type B Curtains & Drapes when FR treated
IMO FTP Code (Part 7) when FR treated

Note: Flammability performance is dependent on components used. Our certificates show what substrates have been used in our tests. For composite tests customers must ensure their complete furniture meets the necessary standards.

Light Fastness

4-6 (ISO 105 - B02)

Fastness to Rubbing

Wet: 4, Dry: 4 (ISO 105 - X12)

Acoustic Properties

Acoustically transparent. Acoustic graphs available upon request

Cleaning

Vacuum regularly. Wipe with a damp cloth using soap and water or use proprietary upholstery shampoo. For deeper cleaning use steam or professionally dry clean. Full details can be found in our cleaning and disinfection guide.

(TSR7)

*Abrasion testing produces a wide variability of results even from the same test sample. The independent certificate of ≥200,000 cycles is available on our website or from our customer service team. Internally we specify this product at >150,000 cycles which we believe is realistic for repeatability of testing. Please be aware that abrasion testing alone is not a reliable indicator of the actual wear performance of fabrics. We're so confident in the durability of our products that we provide a robust 10 year guarantee (full details available). Please note that seam performance is dependent on seam construction and needle and thread type. We recommend that appropriate sewing advice be taken. Batch to batch variations in shade may occur within commercial tolerances. We reserve the right to alter technical specifications without notice. The Unregistered Design Rights and the Copyright in all designs are the exclusive property of Camira Fabrics Limited.

www.camirafabrics.com